

AMENDMENTS (13/09/2015)

Appropriate proposed sites confirmed at Council Meeting on 13/09/2015 (see Appendix One).

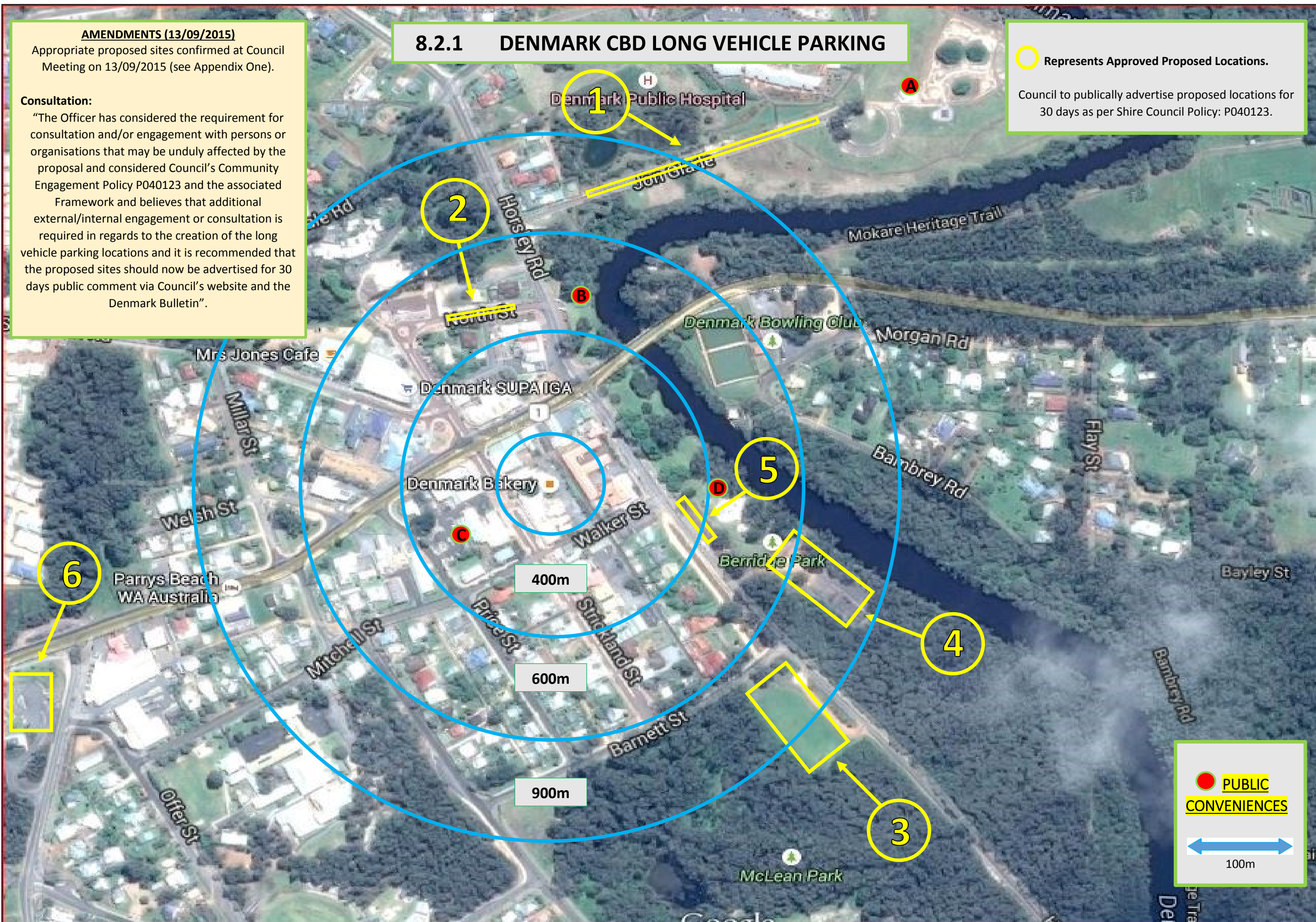
Consultation:

"The Officer has considered the requirement for consultation and/or engagement with persons or organisations that may be unduly affected by the proposal and considered Council's Community Engagement Policy P040123 and the associated Framework and believes that additional external/internal engagement or consultation is required in regards to the creation of the long vehicle parking locations and it is recommended that the proposed sites should now be advertised for 30 days public comment via Council's website and the Denmark Bulletin".

8.2.1 DENMARK CBD LONG VEHICLE PARKING

○ Represents Approved Proposed Locations.

Council to publically advertise proposed locations for 30 days as per Shire Council Policy: P040123.



● PUBLIC CONVENIENCES

100m

8.2.1 Denmark CBD LONG VEHICLE PARKING - **Update – 13/09/2015**

1. Entrance to Kwoorabup Park – Length of Research Station Avenue once it is into the park on both sides (ie: past the house at the corner of Hollings Rd) – 4 Hour Parking.
2. North Rd – adjacent to the Fire Station equivalent to 3 normal bays – 2 Hour Parking.
3. Annie Harrison Park – 2 Hour Parking. **Area is already used for RV parking.**
4. Basket Ball Courts Berridge Park – 4 Hour Parking. **Area is already used for RV parking.**
5. Corner of Walker and Hollings (eastern side of Hollings Rd) – 2 Hour Parking.
6. Denmark Visitors Centre – 4 Hour Parking. **Areas is already in place and use.**

● Public Conveniences

- A. **Kwoorabup Park** – Toilets, BBQ and Gazebo facilities
(Playground/adventure park for children/young families).
- B. **Norm Thornton Park** – Toilets, BBQ and Gazebo facilities.
- C. **Civic Centre** – Toilets. Facility for live performance and AV/film presentations.
Maximum seating capacity of 300.
- D. **Berridge Park** – Toilets, BBQ and Gazebo facilities
(Playground/adventure park for children/young families)

