



BERRIDGE PARK PRECINCT

FINAL CONCEPT DESIGN REPORT

SHIRE OF DENMARK

SEPTEMBER 2023

CONVIC

PREPARED BY

CONVIC

FOR



REVISION HISTORY

REVISION	REVISION DATE	DETAILS	AUTHORISED	
			NAME / POSITION	SIGNATURE
A	29.09.2023	FINAL CONCEPT DESIGN REPORT	BRYCE HINTON / DESIGN MANAGER	

© CONVIC Pty Ltd. All rights reserved.

CONVIC has prepared this document for the sole use of the Client and for a specific purpose, each as expressly stated in the document. No other party should rely on this document without the prior written consent of CONVIC. CONVIC undertakes no duty, nor accepts any responsibility, to any third party who may rely upon or use this document. This document has been prepared based on the Client's description of its requirements and CONVIC's experience, having regard to assumptions that CONVIC can reasonably be expected to make in accordance with sound professional principles. CONVIC may also have relied upon information provided by the Client and other third parties to prepare this document, some of which may not have been verified. Subject to the above conditions, this document may be transmitted, reproduced or disseminated only in its entirety.

QUALITY INFORMATION

PROJECT NAME Berridge Park Precinct
PROJECT NO. 23009
PREPARED BY Matthew Popek
REVIEWED BY Bryce Hinton

ACKNOWLEDGEMENTS

CONVIC Pty Ltd. Acknowledge the contributions of all those who participated in the consultation of the Berridge Park Precinct, including Shire of Denmark Authority staff and residents, community groups and other stakeholders who responded to the various opportunities for input and/or who provided advice and information where required.

CONTENTS

PAGE

01	Introduction	03
02	The Site	04
03	Background	06
04	Site Analysis	07
05	Understanding Active Recreation Context	11
06	Consultation Process	14
07	Consultation Workshops	16
08	Community Responsive Design Brief	18
09	Project Objectives	19
10	Conceptual Ideation	20
11	Project Vision	21
12	Draft Concept Development	22
13	Draft Concept Consultation Summary	23
14	Draft Concept Design Development	24
15	Final Concept Design	25
16	Palettes	45
17	Moving Forward	48

EXECUTIVE SUMMARY

The Shire of Denmark has identified from community consultation the need to provide community infrastructure in and around the Berridge Park Precinct. Berridge Park is the main, popular, central open space with locals and is a key tourist node in the Shire of Denmark.

The proposed development seeks to rectify the deficiencies in youth provision by improving the public amenities, developing youth recreational opportunities and investigating linkages between the Berridge Park area and McLean Park precinct. This precinct is set to extend the provision for active recreation within the area and form a community hub that compliments the existing sporting infrastructure while meeting the current and future youth demands within the shire.

The Shire of Denmark have engaged Convic, as a specialised youth recreation design and construction company, to undertake the initial community engagement and conceptual design phase for the proposed development. This report outlines Convic's initial site analysis highlighting the key opportunities and constraints within the Berridge Park and McLean Park Precincts and assessment of existing recreation infrastructure within the town. A summary of the the consultation process undertaken has been outlined that has enabled a community responsive design brief to be formalised that has informed the creation of the two conceptual designs for the development.

Throughout the initial design phases investigations found that the concentration of recreational program within Berridge Park would provide optimum social, economic and cultural outcomes for the Denmark community and as such design proposals have been prepared with this focus.

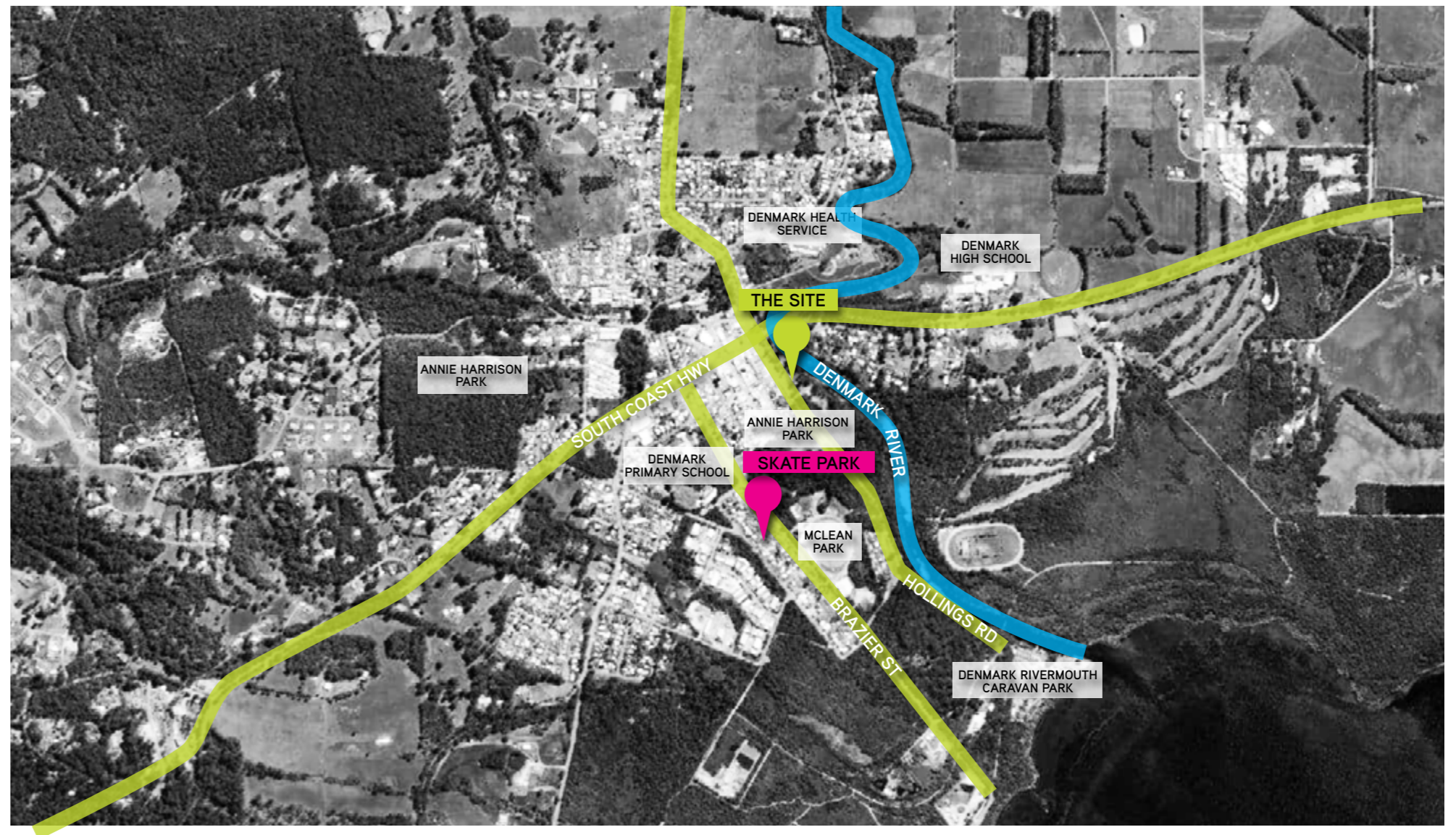


UNDERSTANDING SITE CONTEXT

The proposed location comprises of existing facilities in the centre of Berridge Park and additional recreation facilities located at Mclean Park. Berridge Park is located between Hollings Road and Denmark River and adjacent to the South Coast highway which runs through the town centre. The current parkland includes a playground, toilet block, timber jetty, carpark, asphalt basketball court and unsealed turning zone for caravans. The majority of these facilities are showing signs of wear and tear, outdated design and not best practise functionality for the required activities. A very short distance north of the site is the town's high street with numerous food outlets, shops, tourism and community facilities creating the opportunity to form a high profile centralised community space.

Mclean Park is located a short 10-15 minute walk from Berridge Park by road but a shorter distance via informal pathways through the bush and woodlands. Mclean Park contains a number of Denmark's community sporting facilities including the current skatepark, volleyball courts, BMX track, sports oval, cricket nets as well as the recreation centre and football club. Whilst some of these facilities are new and in a well maintained condition they are not formally integrated with one another and the skate park is showing signs of wear and tear and an outdated design. With the various sporting and recreation facilities the site presents the opportunity to formalise a sporting and recreation precinct.

Combining the existing and proposed site features, the precinct is set to create a dynamic and activated central community hub offering recreational and social experiences for all members of the community; from day to day usage to larger community events. As the foremost recreation precinct within the area it will be a strategic public realm hub for Denmark and the broader region.



EXISTING PRECINCT - BERRIDGE PARK

The existing recreation area has seen many layers of development over its life span. The precinct consists of a play space with shade sails, toilet block, jetty, carpark, a number of shelters, BBQs, seats, feature lighting, unsealed caravan turning zone as well as an asphalt basketball court and other unformalized asphalt slab areas.

Although the site is well maintained, the play space and associated infrastructure is outdated and showing signs of its age. The toilet block is in poor condition and often requires repair work. Areas around the northern end of the site and jetty are in good condition and popular with community. The southern end of the site; further from the town centre feels more back of house and the infrastructure is in poor condition, shows significant signs of wear and vandalism.

The dispersed arrangement of program has incomplete pedestrian circulation and undefined entry points making the site feel fragmented especially from the north to the south extents. Within the space there is good provision of shade, seating and spectator amenity however it only services a small portion of the parklands. During the design process, consolidating program and connecting pedestrian spaces will be a key design driver for a successful outcome.



- 1: Play Space (to be replaced)
- 2: Toilet Block (to be replaced)
- 3: Lawn + Jetty looking out to Denmark River
- 4: Unsealed Turning Circle
- 5: Asphalt Areas

BACKGROUND

EXISTING PRECINCT - MCLEAN PARK

The northern end of the park has been identified for potential development and has recently seen a number of new developments alongside the much older skate park. This area of the park consists of the skate park, sand volleyball courts, dirt BMX track, cricket nets and community centre all situated along the northern edge of the oval carpark.

The new installations are popular and in great condition however the skate park is falling behind contemporary skate standards for both function and condition. The community centre is only opened for formalised recreation and as such disconnected from the afore mentioned active rec. The cricket nets are in fine condition but located higher up the site and the other side of an area of trees and scrub. The carpark located at the higher southern edge of the site overlooks the skatepark and volleyball courts but the BMX track is hidden by the community centre and scrub.

The site and wider parklands have a back of house feel and are comparatively disconnected from the town centre. The scattered arrangement of program, lack of shade and spectating provision and any formal pedestrian circulation makes the site feel disordered. The design process will look to investigate how a connection from Berridge Park will organise program, enhance the developments and create a hierarchy of pedestrian and active community spaces .



- 1: Volleyball Courts
- 2: BMX track
- 3: Community Centre
- 4: Skatepark
- 5: 'Goat Tracks' through surrounding bush

SITE FEATURES


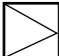




Berridge Park is located along the Denmark River and adjacent to Hollings Road in the centre of Denmark. The current active recreation facilities are scattered around the site with the playground and toilet block both centrally located. The town high street is located just north of the site and a popular caravan park located to the south. There are a number of large mature trees on site, predominantly along the E&W edges and large areas of scrub/bush on the southern edge.

McLean Park is located a further distance from the town centre and located off Brazier Street. The site forms part of the wider sports precinct and comprises a skatepark, volleyball court and BMX track. The wider precinct is made up of a large oval and numerous other organised sporting facilities and infrastructure. The site is bordered on the south by an unsealed car park and the north by dense scrub/ bush.

The large trees and areas of bush will inform the layout of space and available footprint for development. Investigations will be carried out to test the viability of the linking the two sites.



SITE FEATURES

-  EXISTING HARDSCAPE
-  EXISTING BUILT FORM
-  EXISTING BUSH
-  EXISTING TREE - TO BE RETAINED
-  EXISTING TREE - TO BE REMOVED
-  SITE EXTENTS

VISUAL CONNECTIONS + CPTED PRINCIPLES

Berridge Park is centrally located along side the western edge of the Denmark river and parallel to Hollings road providing strong visual connections to the several hotels and cafes along it. At the north end of the site the elevated Denmark bridge provides strong connections into the northern area of the park and from across the river the lawn bowls club allows good visual connections from the east. However at the southern extents of Berridge Park dense bush scrub impedes views from the road but a popular walking track along the eastern edge allows more periodic passive surveillance.

McLean Park is surrounded by dense bush and scrub along three sides of the site and complex topography and the existing community centre impede the views from the carpark on the southern edge. This spatial arrangement does not meet CPTED principles.

It is essential for the design of any youth facility to allow for and encourage clear views into, across and through the site. This promotes passive and natural surveillance for the space and discourages anti-social behaviour. Berridge Park has a number of vantage points into and out of the site that allow these guidelines to take place, particularly along Hollings Road. However, McLean Park will need to develop increased and enhanced visual connections as part of the conceptual development phase.

VISUAL CONNECTIONS



EXTERNAL VIEWS



TOPOGRAPHY + HYDROLOGY

The north portion of the Berridge Park site has a relatively consistent fall from west > east getting steeper along each edge from the road to the river. The southern and central areas of the site are much flatter with the majority of the falls concentrated around the road and rivers edge. The majority of the site drains out naturally into the river.

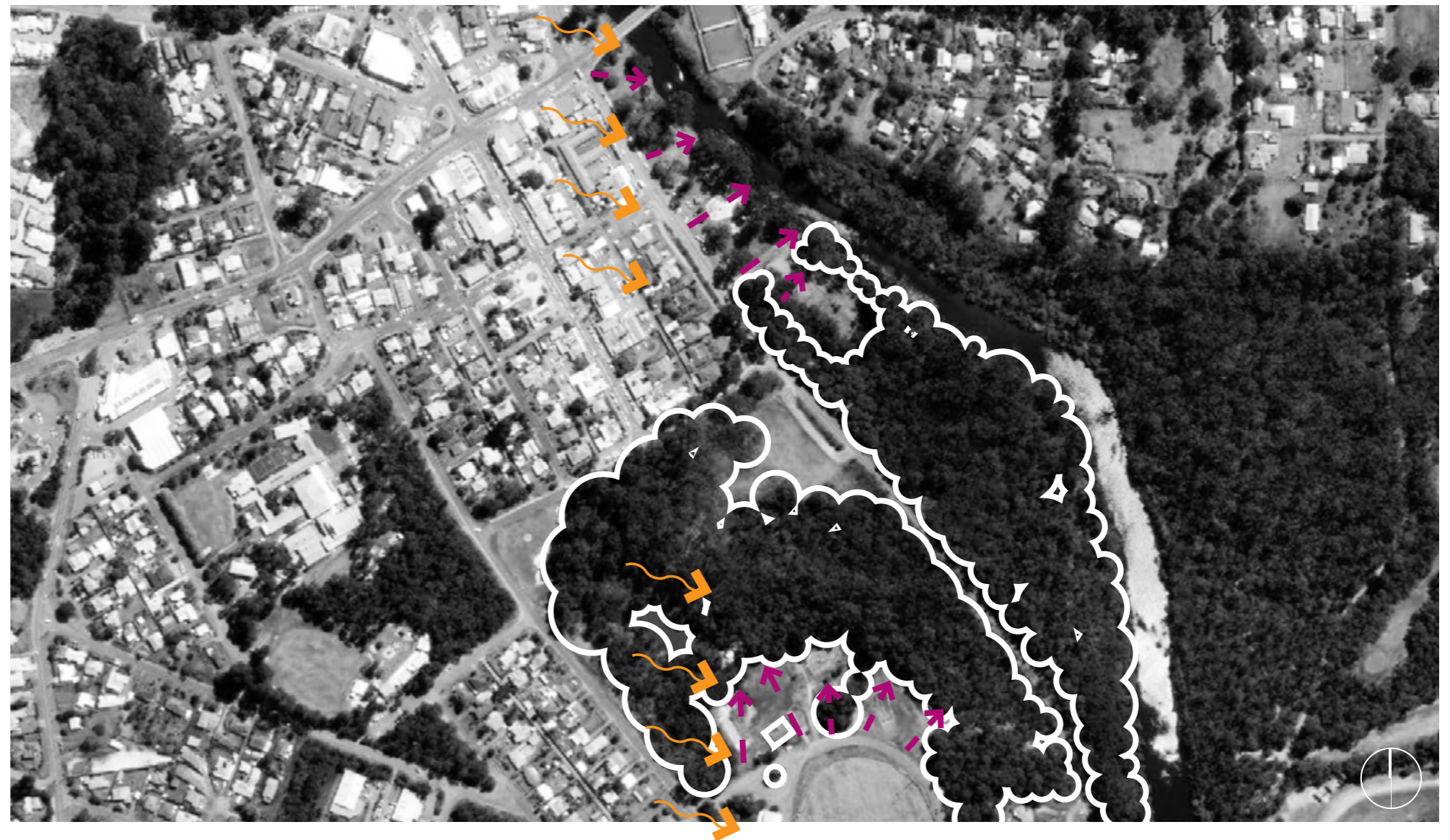
McLean park has far more complex topography, with steep falls running south to north and areas of large build up around the skatepark, community centre to a lesser extent the BMX track. The site drains out to an open basin located to the north of the site in the bush. The community centre drains to two large tanks located in the same area.

McLean park is open and exposed to the sun with no formal shade structure and minimal natural respite provided from trees or the surrounding scrub. Berridge Park is well shaded by a number of large existing trees and shade sails over the play space. Shade will form a key consideration through the design process especially for the play space.

TOPOGRAPHY

— → GRADE DIRECTION

→ AFTERNOON SUN



CIRCULATION + ACCESS

Berridge Park has a well defined path network and surrounding circulation that link to the surrounding connections and destinations. Defined entries for both vehicles and pedestrians lead in from the surrounding roadways and connect the park with the town centre as well as providing off street and on street car parking areas. Internally footpaths connect the play space, lawn areas and toilet block and an additional walking trail runs alongside the river's edge. However, there is a large unsealed informal parking area located in the centre of the site with minimal definition. This is often used as a turning area for larger vehicles and caravans. Further south the existing hardstand courts have no formalised connections.

McLean Park has no formalised footpath or pedestrian circulation networks. A number of unsealed roads and tracks lead from the car parking located around the sports oval to the park features and some from the surrounding bush.

More formal pedestrian and vehicle circulation will form a key aspect of the design development and investigations will be carried out to explore the viability of linking the two sites with walking or active trails.

MOVEMENT + CIRCULATION

←·····→ PEDESTRIAN

← - - - → VEHICLE

⊙ ENTRY POINT



EXISTING SKATEPARK - MCLEAN PARK

The existing skatepark has been assessed and rated based on two key criteria of; **CONDITION** and **FUNCTION**. Both of these identified criteria assess the usability and quality of a facility.

CONDITION:

Constructed in 2006 the existing skatepark is showing significant signs of wear and tear. Cracks and chipping have formed along various concrete joints including construction joints and ramp faces. Large cracks can be hazardous to riders as they can catch wheels and throw users off balance. A number of ramp faces have lumps and uneven riding surfaces where steel coping is showing areas of rust. Attempts to paint and rectify the deteriorated concrete are apparent, however this surface has now failed with paint flaking throughout the facility.

FUNCTION:

Many of features in the skatepark do not meet with contemporary skatepark trends. The hipped mini ramp to street layout prohibits optimum flow especially when the park is busy. The transition features cater predominantly to more advanced riding levels and there is currently minimal transition provision for beginner users. This layout is limited in it's appeal as does not cater to a wide range of abilities or users styles and has limited ability to cater for a large capacity of users at any one time. There has been some attempts to modify the skate features with 'DIY' installs to bring it up to date with more current skate trends. The skatepark is not supported by any additional amenity and has no shade, seating, rubbish bins or drinks fountain which by current standards is seen as fundamental for community skate facilities.

The condition and function review have found that the skatepark is nearing the end of its life span and in need of repair work and additional infrastructure. It is recommended that the existing skatepark either be demolished and replaced with a new facility better suited to the local riding demographic, meet contemporary skatepark design trends and tie in with broader youth precinct development or repair works are undertaken along with the installation of the required amenity and landscape improvements.



UNDERSTANDING ACTIVE RECREATION CONTEXT

EXISTING PLAY NETWORK

The play spaces listed are found within both Denmark and Albany and the surrounding areas. These spaces will be important to consider within the concept development of the Berridge Park Precinct to ensure the proposed design compliments the wider facility network and helps to create a well rounded network of play spaces.

Each of the parks are different in their layout, provision and age however the older facilities are more commonly steel frame on a sand base and the more recent facilities based around a more natural aesthetic but all have a prescribed style of play with the exception Kwoorabup. The parks have a range of different play features but all are aimed at younger children and rarely have any or much provision for older children. Only Berridge park has shade of the play space in the form of purpose built shade sail systems. The parks are often located adjacent to beaches or in other areas of natural beauty. Each of the parks are busy and well used and many contain supporting seating and other amenity.

Although showing some variety many of the parks have similar features and a design style. The designs and layouts will be considered during the concept development works for the Berridge Park where the precinct will look to create something new and complimentary to the existing network.



UNDERSTANDING ACTIVE RECREATION CONTEXT

EXISTING SKATE NETWORK

The skateparks listed are all within an hours drive of the Berridge Park and Denmark and beyond these listed there is not another skate facility for another hour plus drive. It will be important to consider all the local skateparks throughout the development of the concept design in order to form a well balanced skatepark network across the southern coast. Each of the skateparks differ in age, but with the exception of the Albany extension they are all over ten years old with most of them being 10 - 15 years plus and the Albany track the oldest in Australia, built by prisoners in 1972. The skateparks do demonstrate a range of typologies between them but most are of a 'traditional style' and not in line with current skatepark trends.

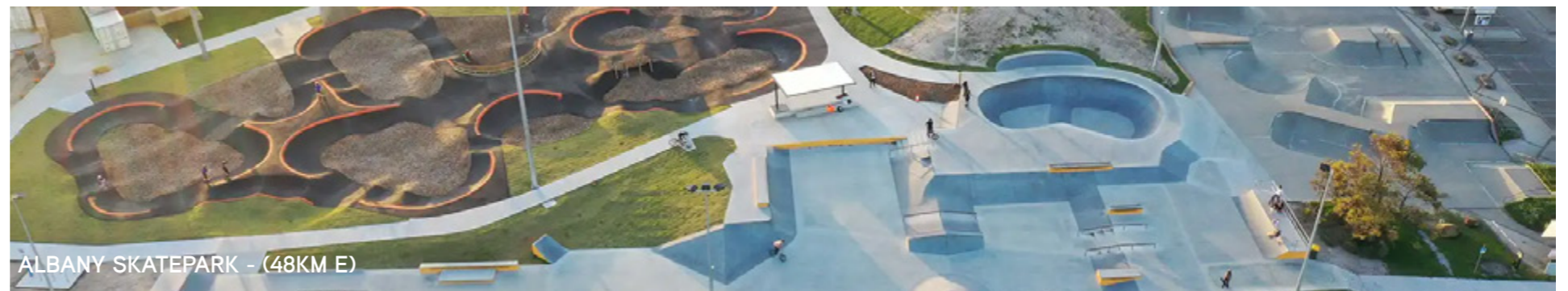
Whilst the recent extension to the Albany skatepark provides a more modern style of skate design and good street provision there is still the notion from the local skatepark community that a standout contemporary destination skate facility is missing in the area.



DENMARK SKATEPARK



LAKE WEELARA BOWL - (46KM E)



ALBANY SKATEPARK - (48KM E)



TORNDIRRUP SKATEPARK - (48KM E)



ALBANY SKATE TRACK - (50KM E)



WALPOLE SKATEPARK - (57KM W)

PRE-DESIGN COMMUNITY CONSULTATION

The consultation process is an integral component of the development of youth spaces and community recreation facilities. In order to ensure the success and longevity of these key community assets it is crucial to engage with the future users of the space.

The pre-design consultation comprised of an in person workshop for members of the local community to provide feedback on their needs and requirements. This feedback informed the development of a community responsive design brief. The workshop attracted community members with a vested interest in the project; including current users and key community stakeholders.

The pre design community consultation workshops were held on site at the existing skatepark within McLean Park and the Denmark Recreation Centre on Wednesday 19th of April 2023.

THE CONSULTATION WORKSHOP AIMED TO:

- Engage with end users and key stakeholders before the design of the precinct commences;
- Inform participants about the project's constraints and opportunities.
- View previous exemplar projects to inform and inspire the participants;
- Gather user information and build user profiles;
- Discuss user requirements to aid the future design;
- Highlight other recreational spaces in the area to indicate the vision for the new facility and identify gaps within active recreation;
- Have community and users take ownership of the consultation process and outcomes.



Pre design questionnaire created to build end user demographics.

PROMOTIONAL SCOPE

The consultation aims to increase the community awareness of the proposed Berridge Park Precinct development and to do so in an open, public and transparent process. Promotional tools to encourage involvement and comments included physical and online advertising targeting skatepark users, youth groups and local residents.

DATA HANDLING AND ANALYSIS

The data handling and analysis has been carried out by CONVIC. The workshops were designed to increase inclusiveness and generate data for analysis into themes and direct design response. All participants were initially informed of workshop objectives and how the information provided will then be used.

All responses are treated in confidence, to ensure the anonymity of respondents. In line with our privacy policy, no identifying information is included with any responses for this report.

REPRESENTATION

The views collected in this report are not statistically validated, however they represent the views of user groups and community members. Themes presented in this report are derived from workshop contributions.

CONSULTATION PROCESS

METHODOLOGY

Workshop sessions will build a sense of community and are a useful tool to seek the opinions of a community group, allowing many differing contributions. Unlike a survey, they enable the discussion of complex issues and any possible underlying concerns.

The workshops were semi-structured to allow the process to unfold freely and invite users to make commitments, suggestions and comments towards a common and collective design vision. The workshops were structured as follows:

PRESENTATION (INFORM AND INSPIRE)

- Present the project parameters, including project brief, site opportunities and constraints and project overview. This informs end users and stakeholders of what is included in the project.
- View and assess existing active recreation spaces within the region so as not to replicate existing facilities and to create a site responsive and unique space.
- Present a selection of 'things to consider' in order to inspire and inform the potential options and capabilities that are possible within in the youth facility.
- Illustrate the nature of contemporary recreation spaces with a variety of integrated, broader community usage options. To show not just skater only facilities, but to include a variety of elements such as, social gathering spaces, sculptural elements and other additional recreational opportunities, as well as illustrating the potential for activation and other community events.

QUESTIONNAIRE

(DEVELOPING USER PROFILES)

- Develop an understanding of the participants demographic.
- Understand user skill level, facility type and frequency of usage.
- Understand local park usage and user location preferences to understand user needs and requirements based on their current habits.
- Collate feedback analysis into representative outcomes.

PICTURE VOTING

(GATHER IDEAS)

- Starts the process of decision making and illustrates individual preferences and "wants".

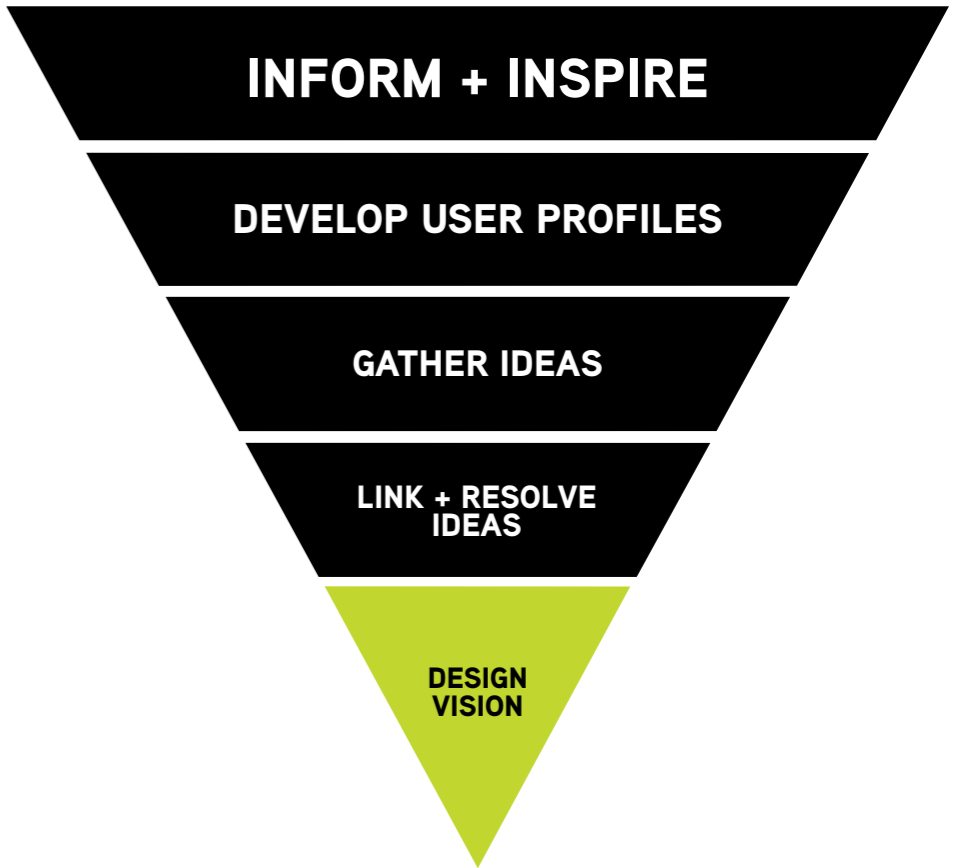
DESIGN WORKSHOP

(LINK AND RESOLVE IDEAS)

- Collaboratively explore and resolve individual ideas through group discussion and creativity, resulting in collective group theme, by developing spatially located design responses.
- Workshop participation and presenting the results to an open forum and wider group discussion.

Utilising this workshop method ensures the evolution of a highly resolved and informed design outcome that is unique to the community. The consultation process encourages the local community to take an active role upon completion of the built outcome to become guardians of the space and most importantly activate the facility.

The following pages summarise the feedback and key themes gathered through this consultation methodology.



COMMUNITY CONSULTATION

Building on community engagement previously undertaken by the Shire of Denmark Council, CONVIC & Council reached out to current end users of the space and future stakeholders. The pre-design consultation comprised of two in person events attracting community members with a vested interest in the project. This included current users, stakeholders and local residents. Precedent imagery of contemporary facilities were on display where attendees were encouraged to share ideas in an open discussion with the CONVIC design team.

The first event was a drop-in event held during 'Youth Week' at the current skatepark whilst community skate competitions and demonstrations were taking place. The second was a formal workshop held at the nearby recreation centre which sort to capture feedback from more invested community members. At both sessions participants were encouraged to complete surveys and enter into conversations around the precedent imagery on display to further explain what they might want to see in the development. The second also included a presentation which outlined in more detail the project parameters.

SUMMARY

STAND OUT IDEAS CENTRED AROUND THE FOLLOWING KEY THEMES

- The skatepark, play space and basketball court were the most popular inclusions.
- Other popular inclusions included ping pong tables, stage area, spectator seating, climbing, parkour, multiuse pathways and bbqs.
- Many participants mentioned the need to upgrade the toilet at both sites.
- Linking both sites was popular however participants wanted to see them developed individually.
- Nature material use and theming was very popular especially in the play space and skate areas.
- Provision for a wider demographic, all ages and to encourage female participations into active spaces.
- A flowy mix of street and transition with a 'surf style' influence was popular for the skate typography.



CONSULTATION WORKSHOP - ONLINE

COMMUNITY CONSULTATION

To support the in person consultations and allow anyone that was not available to attend them the opportunity to be involved with the consultation process, Shire of Denmark Council facilitated an open online survey that mirrored the printed surveys available at the workshops. Council also provided community members the opportunity to submit precedent imagery, example projects and sketches to them directly or to email through any written ideas or discussion topics.

Over 20 number of surveys were completed online from a wide demographic of participants.

This process captures a wide range of community voices and views and allows anyone who wants to be involved in the decision making and communicate their individual preferences and 'wants'.

SUMMARY

STAND OUT IDEAS CENTRED AROUND THE FOLLOWING KEY THEMES

- Flowing surf/ skate style skate terrain.
- Embrace and enhance green spaces.
- Reflect the unique natural environment of Denmark and surrounding areas.
- Inclusion of spectating and rest areas with supporting amenities was important.
- Separate areas to service multiple demographics.
- Sculptural skate elements; rock/granite and tree logs obstacles were some ideas shared.
- Park and play to encourage natural themes, nature play and unprescribed play
- Shade is considered an important inclusion especially around the play space with the potential to act as an additional gathering space.



HAVE YOUR SAY!
BERRIDGE PARK PRECINCT
 We want your help to design the new Youth Precinct in Berridge Park! Come along to either of the pre-design consultation workshops listed below and let us know your thoughts on what you want to see included in this exciting new community space!

HOW CAN I GET INVOLVED?

DESIGN WORKSHOPS:

When: Drop In Session Wednesday 17th April 10:00am - 4:00pm	Design Workshop Wednesday 18th April 6:00pm - 7:00pm
Where: Youth Meet-Fest McLean Sports Precinct	Denmark Recreation Centre Function Room McLean Park, 45 Brazier St, Denmark

Come down, get involved and share your ideas on what you think would be best for the new design of the space!!
 Follow the link below for project updates and to take part in the online survey.
www.yourdenmark.wa.gov.au/berridge-park

CONVIC

THE BERRIDGE PARK PRECINCT WILL PROVIDE A MULTI-DISCIPLINE STYLE FACILITY CATERING FOR ALL SKILL LEVELS. IT WILL COMPLIMENT SURROUNDING INFRASTRUCTURE, BE INVITING, FAMILY FRIENDLY AND CELEBRATE THE UNIQUE NATURAL ENVIRONMENT OF DENMARK.

CONSULTATION SUMMARY

The pre-design consultation outcomes have been summarised to inform a community driven design brief for the Berridge Park Precinct. The information collected from the design consultation process have informed this brief. These are all outlined thematically and will be used as the foundation for the development of the concept design options.

TARGET USER GROUP

The community workshops has identified a mix of users that are interested in the future of the space, with parent/ guardian, local resident and wheeled sports users being the most common response. The age group of 34-50 and 9-15 were the most represented groups. A number of responses also made note to say the play space in particular needed to cater toward not just younger children but also those aged 8-18 years of age (teenagers and young adults).

SKATE TYPOLOGY

A clear preference for a mixed facility of street and transition style elements were indicated by participants with a preference for a flowing organic style. This will provide a facility that can cater for all riding styles and appeal to a wider catchment of end users.

PLAY SPACE VISION

Standout responses called for a natural themed play space, with minimal plastic inclusions. Many also commented on how they'd like to see the a more unprescribed arrangement of play features to encourage more imaginative and explorative play. Comments also managed the desire to shade/ shelter elements of play and to limit the use of sand.

ICONIC ELEMENTS

To celebrate Denmark and give the precinct its own identity and connection to place the design should reflect the unique surrounding landscape and nature of the area. Denmark's unique coastline and lush forests were highlighted by a number of community members, such ideas are to be reflected in the facility to provide users with a sense of ownership of the space.

USER + SPECTATOR AMENITIES

To ensure a central community space that can be used by a variety of different user groups, the facility must tie into several other social opportunities within it's surrounds. The provision for areas of refuge and shade throughout the day was mentioned frequently. Many highlighted the need for breakout spaces to allow for social hangout zones, spectating areas and entertainment/ stage spaces, this will be considered when developing the concept design options.

RECREATION PROGRAM

The most popular requests from community centred around a new skatepark, play space, toilet block and basketball court. There was also many requests for ping pong tables, a stage area, climbing/ bouldering, parkour, pump track and gym equipment. To support the development of the primary active recreation spaces a number of additional passive recreation will be included to form a well rounded community precinct. These will include shelters, seating, drinking fountains and BBQs. Mixed use pathways were popular and many responses were in favour of proving links between the two parks but for them to be developed separately.

DENMARK PUBLIC SPACE INFRASTRUCTURE

Denmark has seen a large population increase in the years since the Covid pandemic with many younger families moving to the area in recent years. Tourism remains one of the areas largest industries and with it an additional flexible population which is especially high around school holidays. This also attract a number of young families to the area. The area also contains a number of popular surf beaches and swimming spots.

Many are attracted to the area for it's varied and iconic natural beauty, relative untouched landscapes and it's community based lifestyle. Formally a much more concentrated location for retirees outside of the holiday seasons, this carries with it an almost bucolic aesthetic where design and development remains reflective of the communities lifestyle.

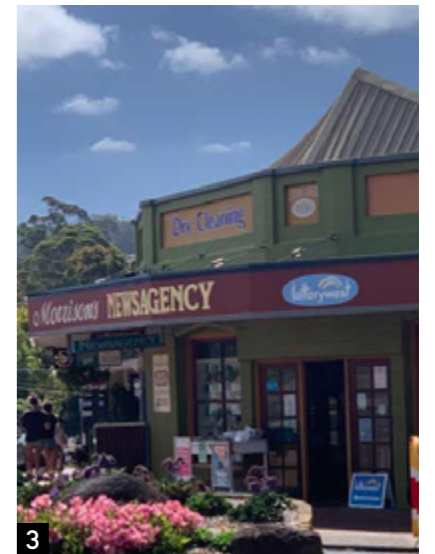
Although successful in supporting a varied demographic and seasonal tourism population, the town lacks a contemporary flagship public youth precinct that promotes the values of young people and young families in the area. The new Youth Precinct will look at ways to celebrate youth within the community. Colour, vibrancy and custom design elements will celebrate young people and be a point of difference to other existing public spaces in the area.



1



2



3



4



5

- 1: Ocean Beach & Wilson Inlet
- 2: Denmark High Street
- 3: Typical Shop Front
- 4: Forrest Footpath
- 5: Heritage Rail Bridge

A BIODIVERSE RECREATION PRECINCT

The history of South Western Australia and The Great Southern is as old as the earth itself. Where huge slabs of granite and rock can be seen and walked on much the same as they would have been billions of years ago. This iconic landscape is unique to the area and the captivating rock formations and ecosystems within it are unlike any anywhere else in the world.

With minimal effect from large geological events the area is now home to some of the oldest plants and animals on earth. Many of the oldest plant species are small non-flowering mosses which create a vibrant contrast to the dark granite and earthy rocks around which they grow.

This dynamic combination of historic rock formations and vibrant vegetation creates an interesting mix of layers of texture, form and tone. The concept development aims to adopt this aesthetic and enhance the user experiences through materiality, layering of recreational programs and human interactions to give the precinct a connection with it's historical surrounds.

The adjacent photography shows elements of this complex and diverse geological ecosystem.



DESIGN VISION

The aim of the Berridge Park Youth Precinct is to bring contemporary youth space design to the region and integrate a vibrant youth precinct within the natural surrounds. The facility will draw inspiration from the local landscape character and geological formations of the region and set out to celebrate and inspire young people amongst the wider community.

The design will directly respond to feedback received throughout the community consultation process. The proposed facility will focus on a new play space upgrade, new regional level skatepark, new toilet block and basketball court and consider a range of supporting recreation including ping pong tables, a stage area, climbing/ bouldering, parkour, a pump

track and gym equipment. These will be strengthened by a number of passive elements allowing for rest, respite and providing a space for social interaction amongst peers to occur.

Each of the recreation and play features will represent the regions natural landscape character and through this ideation provide a diverse recreation program that is unique to the region.

The new skate park will cater towards beginner and intermediate users providing a range of more contemporary skate features that mix street features within a more mellow 'surf style' transition layout. These

elements will reflect those highly requested by the community during the pre design consultation engagement workshops.

Supporting these active spaces will be a network of passive space that will ensure the precinct is safe, inviting, family friendly and inclusive.



OPTION 01

Design Option 01 aimed to provide a chain activation running north to south through the parklands to tie the entire site together. This was achieved through a varied program of both active and passive recreation. The path network was combined to bring people into the centre of the parklands and create a green buffer to the river's edge.

Although received well it was not the preferred option and council feedback favoured design Option 02.

**OPTION 02 - PREFERRED**

Design Option 02 set out to divide the site from north to south allowing the popular northern end of the site to remain as is whilst the new developments were concentrated to the southern sections of the parklands. The path network introduced a hierarchy in which the central footpaths formalised connections and a more informal pathway connected people with the adjacent river.

Design Option 02 was favoured for several reasons including:

- Less development in the northern end of site.
- Active recreation concentrated in the the centre and southern parts of the parklands.
- Larger key active recreation areas including the skatepark and play space.

Design Option 02 will be developed in line with council and community feedback.



THE BERRIDGE PARK PRECINCT WILL PROVIDE A MULTI-DISCIPLINE STYLE FACILITY CATERING FOR ALL SKILL LEVELS. IT WILL COMPLIMENT SURROUNDING INFRASTRUCTURE, BE INVITING, FAMILY FRIENDLY AND CELEBRATE THE UNIQUE NATURAL ENVIRONMENT OF DENMARK.

CONSULTATION SUMMARY

The draft-design consultation comprised two in person local workshops which took place on the 9th August, as well as an online consultation survey in which community members were invited to share their feedback and ideas on the draft concept design. The outcomes from which have been summarised to inform a community driven design brief for the final concept design for the Berridge Park Precinct. The information collected at the consultation process have informed this brief. These are all outlined thematically and will be used as the foundation for the development of the final concept design.

TARGET USER GROUP

A total of 70+ responses were received and a near even mix of genders - 34 Male & 40 Female. The results identified a mix of users that are interested in the future of the space, with local residents, parents, playground users and wheeled sports users being the most common responses. And the age group of 34-50, 51 + and 9-15 were the most highly represented groups. It is likely that many of the older age groups are responding as representatives fro younger children.

SKATE TYPOLOGY

The most frequent response by community in response to the skate design was to include a closed bowl with 'iconic' feature to act as a draw card to the facility. The final concept design will look to include this feedback as part of the design development.

PLAY SPACE VISION

The majority of responses called for more variety in the play space, more natural finishes and planting and more informal play that allows for a wider range of users. Community members also suggested a play swale to bring water play into the space and how this could be developed to create a unique feature different to any other in the region. Comments also included the desire for all access equipment, additional shade and a flying fox. This will be considered as part of the draft to final concept developments.

ICONIC ELEMENTS

Community were asked how the design could be developed to better celebrate and represent Denmark and give the precinct a unique and recognisable aesthetic. Responses included the development of a wave feature to represent Denmark's surfing culture and others made comment of the natural environment and in particular the native Blue Wren. Further comments mentioned aboriginal inclusion and theming. These ideas will be developed and reflected in the facility to provide users with a sense of pride and ownership of the space.

USER + SPECTATOR AMENITIES

To ensure a central community space that can be used by a variety of different user groups, the facility must tie into the surrounding social opportunities as well as the natural surrounds. Comments were made around reducing concrete footpaths, increasing shade, adding additional BBQ areas and providing more native plant species including bush tucker and herb gardens.

RECREATION PROGRAM

The most popular requests from community centred around ideas to further develop the skatepark and play space. However many also mentioned enhancements to the court area to include a hit up wall, more painted games and netball hoops. Feedback was also received to change the climbing feature to provide more interest and play value. Others mentioned more passive inclusions such as outdoor chess tables in the shelter areas.

The following pages show how the design has been updated to include council and community feedback where applicable.

HAVE YOUR SAY ON THE NEW CONCEPT!!

BERRIDGE PARK PRECINCT
We want your help to design the new Youth Precinct in Berridge Park!! Come along to either of the draft design workshops listed below to see the new concept design and let us know what you think!

HOW CAN I GET INVOLVED?

DESIGN WORKSHOPS:

When: Design Workshop Wednesday 9th August 3:30pm - 4:30pm	Design Workshop Wednesday 9th August 6:00pm - 7:00pm
Where: Mclean House Mclean Park (Opposite the Skatepark)	Denmark Recreation Centre Function Room Mclean Park, 45 Brazier St, Denmark

Come down, get involved and share your ideas on what you think would be best for the new design of the space!!

Follow the link below for project updates and to take part in the online survey:
www.yourdenmark.wa.gov.au/berridge-park

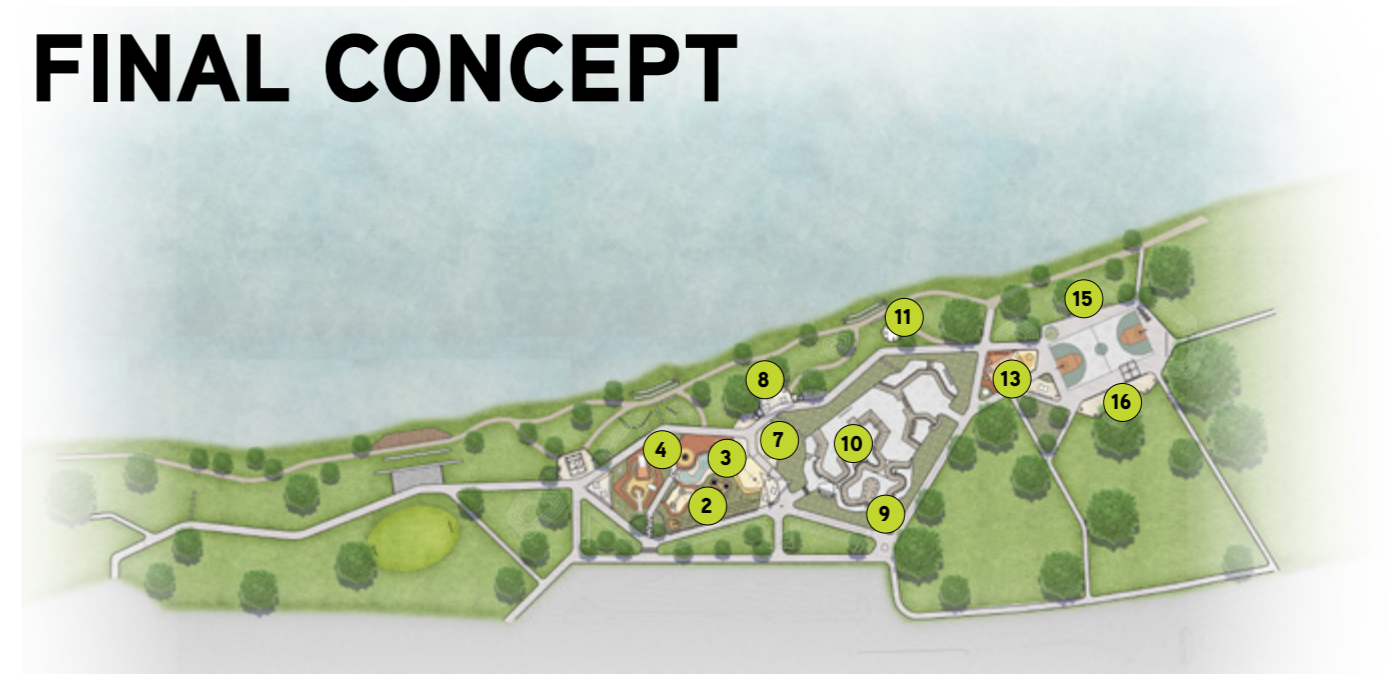
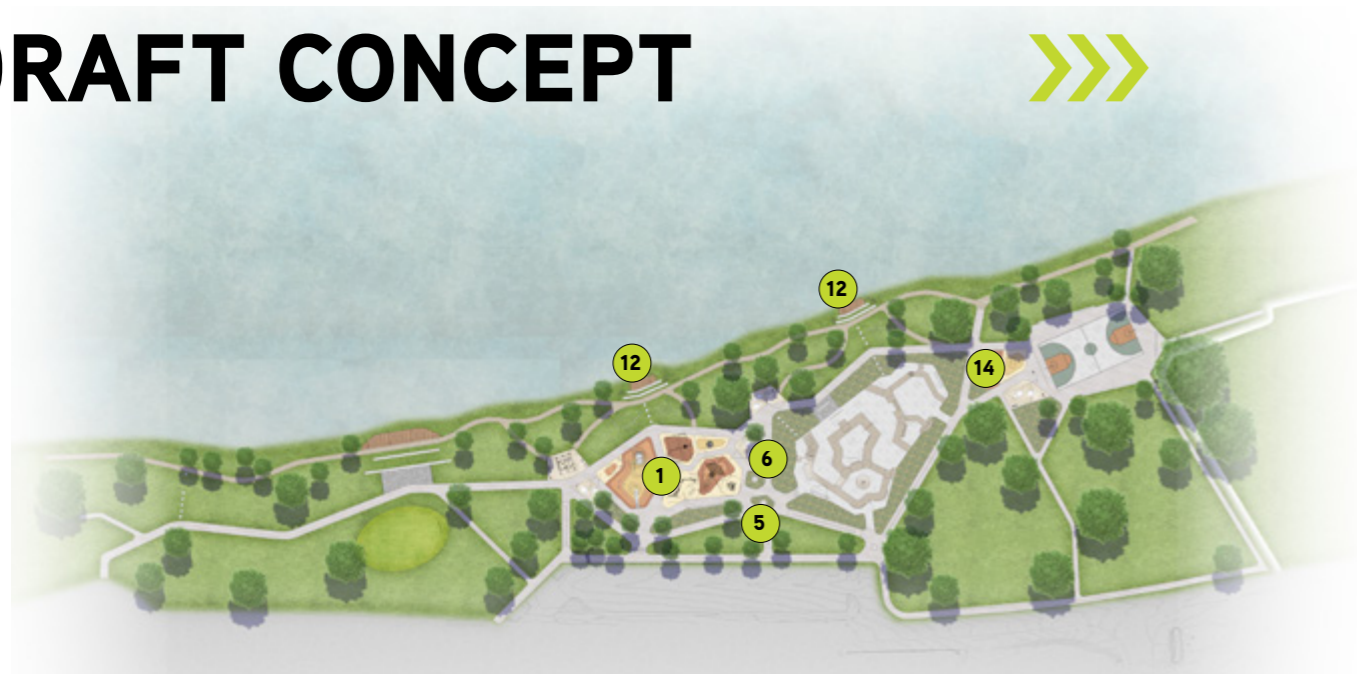
CONVIC

DRAFT CONCEPT DEVELOPMENT

DRAFT CONCEPT



FINAL CONCEPT



KEY CHANGES

1. Play space developed to include more unique play features and appeal to a wider age range and demographic.
2. Additional natural materials, finishes and planting introduced to play space to soften and provide more natural aesthetic including native species and timber sleeper safety fencing.
3. Water play swale feature with 'Blue Wren' play sculptures added to playspace.
4. DDA accessible play feature included in play space.
5. Concrete path network reduced and colour and finish changed to exposed aggregate to provide more natural aesthetic.
6. Concrete seating reduced around play and central sculpture space.
7. Sculpture space introduced to centralised garden area with native plant species.
8. Timber shelters, bush tucker and herb gardens added to BBQ and shelter area.
9. Bowl area added to skatepark.
10. Iconic over vert 'Wave' feature added to skate park.
11. Yarning circle added to introduce aboriginal theming.
12. Timber decks along river banks removed.
13. Secondary BBQ space added with picnic tables, shelter, chess tables and bike repair station.
14. Climbing structure removed and replaced by dual use climbing and hit-up wall.
15. Spectator terraces added to court area.
16. Netball hoops and additional painted games added to allow 4 square and handball.

LEGEND

- 1 Kick-a-Bout Pitch
- 2 Riverside Concrete Terrace Seating
- 3 Toilet & Refuge Area
- 4 Multi-use Play Space
- 5 Sculpture Garden (Local Public Art)
- 6 Primary BBQ Area w bush tucker & herb gardens
- 7 Concrete Skatepark w bowl & street spaces
- 8 Yarning Circle
- 9 Secondary BBQ Area w bike station & chess tables
- 10 Ping Pong Area
- 11 Multi Court Area w painted games & terrace seating
- 12 Hit Up & Bouldering Wall
- 13 Shade Sails & Seating
- 14 Riverside Footpath
- 15 Formalised Path Network
- 16 Feature Turf Play & Seating Mounds
- 17 Sculptural Gateway Feature



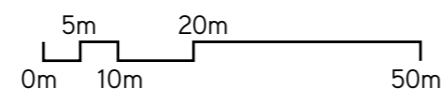
CLIENT:



DESIGNER:

CONVIC

SCALE: 1:1000 @ A3



PROJECT:

Berridge Park Precinct

TITLE:

Final Concept Design

DATE:

28.09.2023

REVISION:

A

STAGING PLAN

LEGEND

STAGE 1:

- 1 Concrete Skatepark with supporting amenity:** This space will offer a contemporary skate facility with bowl area, flow section and a variety of street features. The bowl will include a unique 'Concrete Wave' feature to reflect the coastal location of Denmark.

FUTURE STAGES:

- 2 Play Space:** Inclusive of four individual areas aimed at different ages groups and abilities the playspace centres around a feature play swale to create a unique water play experience around sculptural 'Blue Wren' play sculptures.
- 3 BBQ & Shelter Areas:** Two BBQ areas support the North & South portions of the site with shelter, seating, BBQs and amenity. Each of the shelter areas provides additional offerings including bush tucker & herb gardens, a bike station and chess tables.
- 4 Multi-Court, Ping Pong & Climbing:** A full sized concrete multi-court with painted games, hit up wall, netball hoops and concrete terraced seating as well as a ping pong area. To better utilise the hot up wall a bouldering area is proposed on the back side of the wall with viewing windows and spectator seating.
- 5 TOILET BLOCK:** New toilet block with supporting amenity.



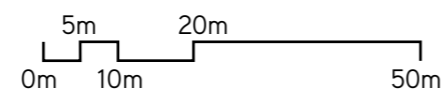
CLIENT:



DESIGNER:

CONVIC

SCALE: 1:1000 @ A3



PROJECT:

Berridge Park Precinct

TITLE:

Final Concept Design

DATE:

28.09.2023

REVISION:

A

FINAL CONCEPT

FACILITY OVERVIEW



MULTI-COURT AREA OVERVIEW



FINAL CONCEPT

BOULDERING + MULTI-COURT OVERVIEW



FINAL CONCEPT

SHELTER + BOULDERING + PING PONG OVERVIEW



FINAL CONCEPT

SKATEPARK OVERVIEW



FINAL CONCEPT

SKATEPARK BOWL SECTION OVERVIEW



FINAL CONCEPT

BOWL + WAVE OVERVIEW



FINAL CONCEPT

STREET SECTION OVERVIEW



FINAL CONCEPT

SCULPTURE WALK OVERVIEW



BBQ + SHELTER WITH BUSH TUCKER & HERB GARDEN AREAS



FINAL CONCEPT

RIVERSIDE TERRACING OVERVIEW



FINAL CONCEPT

PLAY SPACE OVERVIEW



PLAY SPACE OVERVIEW



FINAL CONCEPT

PLAY SPACE OVERVIEW



FINAL CONCEPT

PLAY SPACE OVERVIEW – TODDLER MOUNDS



FINAL CONCEPT

PLAY SPACE OVERVIEW - PLAY SWALE



FINAL CONCEPT

PLAY SPACE OVERVIEW - NATURE WALK



FINAL CONCEPT

RESTROOMS OVERVIEW



LANDSCAPE INTERVENTIONS

Long sweeping paths provide different experiences as the passive user meanders through the precinct and finds different pods of active recreation throughout their journey within the space. The direct and intersecting paths of travel for the passive user allow for unobstructed views throughout the precinct. Paths divide up the space to provide areas of active recreation.

The path of travel changes in width to slow the passive user down, encourages a pause in their journey through the site and the observation of key active recurrent program. Primary paths connect users to key egress and ingress points with secondary swooping paths forming connections with program and social spaces.



PALETTES - ACTIVE RECREATION

ACTIVE REC INTERVENTIONS

A variety of recreational programs seamlessly integrated within the space, suitable for all skill levels and user types. Materials and finishes have been incorporated to accentuate the organic and natural aesthetic of the design. Materials incorporated into the different zones will directly reflect materials found throughout the region's landscape environment and will form connections to the sites context while offering a vibrant and exciting space for youth.



PALETTES - PLAY

PLAY INTERVENTIONS

Play interventions within the Berridge Park Precinct will include a variety of elements that appeal to different age groups and abilities. A combination of structural and nature inspired play provides flexibility to include sculptural features that are vibrant and exciting while including features that relate back to the sites context and encourage imaginative interaction.

Play has been centrally located to create a family hub within the precinct. Connections between the skate and play zones are provided to allow for families and groups that have members with different interests to utilise different active recreation program while providing safe spectating areas across the different zones.



NEXT STEPS

As a part of the ongoing design process for the development of the Berridge Park Precinct, the final concept design report will be presented to the Shire of Denmark for approval.

Once endorsed by council the final concept design report and material can be utilised for marketing purposes to inform the community of project updates and allow them to see their comments and feedback culminated into a design resolution. This will complete the concept design phase and close out the loop of community consultation engagement.

Upon review and endorsement of the funding application report by Council and the community the submittal of the funding application will be made by Shire of Denmark Council.

Once funding has been approved the design will go through further technical development in preparation for the construction phases of the project.

CONVIC

CREATE COMMUNITY

HEAD OFFICE
UNIT 13, 46-50 REGENT STREET
RICHMOND VIC 3121 AUSTRALIA
T +61 3 9486 9899

MELBOURNE | SINGAPORE | DUBAI

CONVIC.COM

ORDINARY COUNCIL MEETING – 27 FEBRUARY 2024

ADDITIONAL INFORMATION – ITEM 9.3.1

Cr Carman asked the following questions.

The Chief Executive Officer has provided the following responses to all Councillors prior to the Council Meeting.

1. Clarification on "Outdated":

How does the term "outdated" apply within the context of maintaining Denmark's unique character by not updating everything to a particular standard, as mentioned in point 4? Can officers elaborate on how this principle guides development decisions in Denmark?

Response

When we talk about playgroup equipment being "outdated," it typically means that the equipment no longer meets the current standards or expectations in several areas:

- *Safety Standards*
Over time, safety regulations and standards evolve as we learn more about what is safe and what isn't for children. In particular, the equipment in Berridge Park uses outdated materials, outdated designs, and wear and tear, making them less safe than modern examples.
- *Inclusivity and Accessibility*
As awareness of inclusivity and accessibility increases, playgroup equipment also needs to adapt to be usable by children of all abilities. Berridge Park equipment is not considered accessible to children with disabilities and does not cater to a wide range of developmental needs.
- *Design and Functionality*
Trends in playgroup equipment design change over time, with newer equipment often designed to support a broader range of developmental skills, such as motor skills, social interaction, and imaginative play. Berridge Park equipment lacks these features and is less engaging to children accustomed to more modern designs.
- *Environmental Impact*
There's a growing emphasis on sustainability and the environmental impact of products, including playgroup equipment. The 'plastic fantastic' equipment in Berridge Park is not made with eco-friendly materials or processes, making them outdated in terms of environmental sustainability. The feedback from the consultation process provided multiple comments about using more "natural" materials for the playground.

In the context of Denmark character, these concepts do not conflict with that notion and in many cases can be complementary. During the consultation, there was a strong preference for a natural-themed play area with minimal plastic, encouraging imaginative play through an organic layout of features, shaded areas, and limited sand use.

The vision for the play space includes a diverse, naturally finished area with plants and informal play options for a wide audience. A suggested water play feature, a play swale, could offer a unique aspect not found elsewhere in the region. Additionally, the community wants accessible equipment for all users. The concept design proposes a play space divided into four sections tailored to various ages and abilities, centred around a play swale with 'Blue Wren' sculptures for a distinctive water play experience for uniqueness in Denmark. The design positions play activities at the heart of a family hub, linking skate and play areas for mixed-interest groups while ensuring safe viewing spaces.

2. Main Street Identification:

In point 5, the document refers to the north of the site as the town's main street. Given that some consider Strickland Street, with its bakeries, food outlets, sitting precincts, library, etc., as the main street, was there an error in the directional description? Should it be corrected to the west of the site instead of north?

Response

The point does refer to Strickland Street/Town CBD, which may have been a better description. This is to the west of the site, as noted above.

3. Linkages to the CBD:

Points 14, 19, and 23 mention clear linkages to the CBD. Can officers provide more specific details on what these linkages entail? Are they solely related to proximity and access to uptown food outlets, or do they include other aspects?

Response

The concept plan does not include any linkages in the concept design. However, the Draft Local Planning Strategy (LPS) supports the development of stronger connections between parklands and the remainder of the Town Centre. The preparation of a precinct plan for the Town Centre Planning Area (a proposed action from the Draft LPS) will allow for improvements to public spaces and infrastructure to be explored in greater depth.

4. Status of Final Concept Design:

Regarding point 17, is the project currently at the final concept design stage, or is this still a future phase? Can officers clarify the current status?

Response

The current design stage is at Concept Design. Officers are seeking approval of the concept design from Council. No further stages of design will be completed until construction funding is secured.

The transition from concept design to detailed design, and eventually to construction documentation, involves several stages, each critical for successfully realising a project.

An overview of these stages is provided below:

Concept Design (complete – seeking adoption)

Objective - To establish the overall vision of the project. This phase explores ideas, defines the project's scope, and determines its feasibility. It's highly creative, aiming to capture the essence of what the project is intended to achieve.

Key Activities -

- *Idea Generation: Brainstorming sessions to identify the project's goals, themes, and potential features.*
- *Preliminary Sketches: Initial drawings to visualise the layout, spatial relationships, and major components of the design.*
- *Feasibility Studies: Assessments to understand the project's practicality, considering factors like budget, site constraints, and regulatory requirements.*
- *Feedback: Presenting initial concepts for input, ensuring the project aligns with their vision and expectations.*

Detailed Design (not started)

Objective: To refine the concept into a comprehensive design that specifies all critical elements of the project. This phase transforms broad ideas into detailed plans, including precise dimensions, materials, and technical specifications.

Key Activities:

- *Design Development: Detailed drawings and specifications are produced, outlining every aspect of the project, from structural solutions to finishes.*
- *Material Selection: Choosing appropriate materials and finishes that meet the project's aesthetic, functional, and budgetary requirements.*
- *Engineering Coordination: Integrating structural, mechanical, electrical, and plumbing systems into the design, often requiring collaboration with specialised engineers.*
- *Cost Estimation: Updating the project budget based on the detailed design, ensuring it remains within financial constraints.*

Construction Documentation

Objective: To create a set of documents that will guide the construction process. These documents include detailed drawings, specifications, and instructions necessary for contractors to accurately bid on and build the project.

Key Activities:

- *Construction Drawings: Detailed drawings that communicate the design to contractors, including floor plans, elevations, sections, and detailed construction details.*
- *Specifications: Documents that specify the quality, types, and standards of materials, workmanship, and equipment to be used in the construction.*
- *Permit Applications: The necessary documentation to obtain approvals and permits from relevant authorities.*
- *Bid Packages: Packages for contractors to bid on the project, including drawings, specifications, and any other relevant documents.*

5. Community Consultation Thoroughness:

Point 22 states that the consultation was comprehensive. However, concerns remain about the timing and nature of community engagement. Can officers discuss whether there's room for improving the consultation process to facilitate more meaningful shared conversations at crucial points?

Response

The project's inception was instigated through the original Sport & Recreation Master Plan in 2019, which identifies the ageing infrastructure and potential for Berridge Park to be a community hub. Most recently, the Community Scorecard also highlighted the lack of youth service provision, which is detailed further in response (7).

The following detailed consultation has been completed to date:

- *Berridge Park Precinct Survey*
- *Youth Fest Drop In Session (Wed 19 April 2023)*
- *Design Workshop (Wed 19 April 2023)*
- *Preliminary Concept Survey*
- *Design Workshops (Wed 9 August 2023)*

Officers consider this level of consultation appropriate and would recommend against any additional consultation at this stage of the design process (concept).

There may be the opportunity for targeted consultation for specific aspects through detailed design. However, this would be limited to specific aspects of the detailed design. For example, representatives from the Skateboard Club could further inform the details of the skatepark.

6. **Skate Park Inclusion Justification:**

Given the significance of the skate park in the Berridge Park redevelopment—financially, physically, and in terms of concrete usage—can officers provide a dot point outline or similar documentation that demonstrates how the consultation process clearly identified this facility as a priority for recreation, for youth, and for this specific site? Please include references to community feedback results and any documents that were used to support this decision.

Response

2019 Sport and Recreation Master Plan

Identified issues:

- *Poor location of the existing skate park*
- *Dated skate facility*
- *Poor maintenance of the skate facility*
- *The basketball court (Berridge Park) requires lights and upgrading.*
- *Provision of youth services poor*

Recommendation:

- *Develop a new youth and community precinct at the Berridge Park location that includes:*
- *New Skate Facility.*
- *Outdoor Court with lights.*
- *Beginner-level pump track (opportunity for central Mt Bike trail signage/info board).*
- *Development of youth precinct in consultation with youth/community.*
- *The inclusion of additional youth facilities (revised skate park and pump track) should also support the trend of youth participating in non-traditional sports and gravitating towards adventure sports.*

It is noted that the site cannot accommodate a pump track, and therefore, the community-built pump track facility has been located at Mclean Park.

2022 Community Survey

The community survey demonstrated that this facility is a priority. Items associated with the facility are highlighted in the figure below. Most notably, 'Youth Services and Facilities' is the worst

performing and highest priority areas. Analysis of the free text question associated with this survey indicates that the skatepark is the most essential aspect of the youth facility (youth precinct) and, therefore, requires the most focus. The commentary also clearly identified that the skatepark should be relocated to an area with good visibility and high usage such as Berridge Park.

Due to construction complexity, skateparks are more expensive per area than playground or court space, which is why they are the most expensive feature in the concept.

Public skateparks are constructed of concrete due to longevity and low maintenance requirements. Timber construction is the alternative but would be inappropriate in an outdoor location with Denmark's climate.

