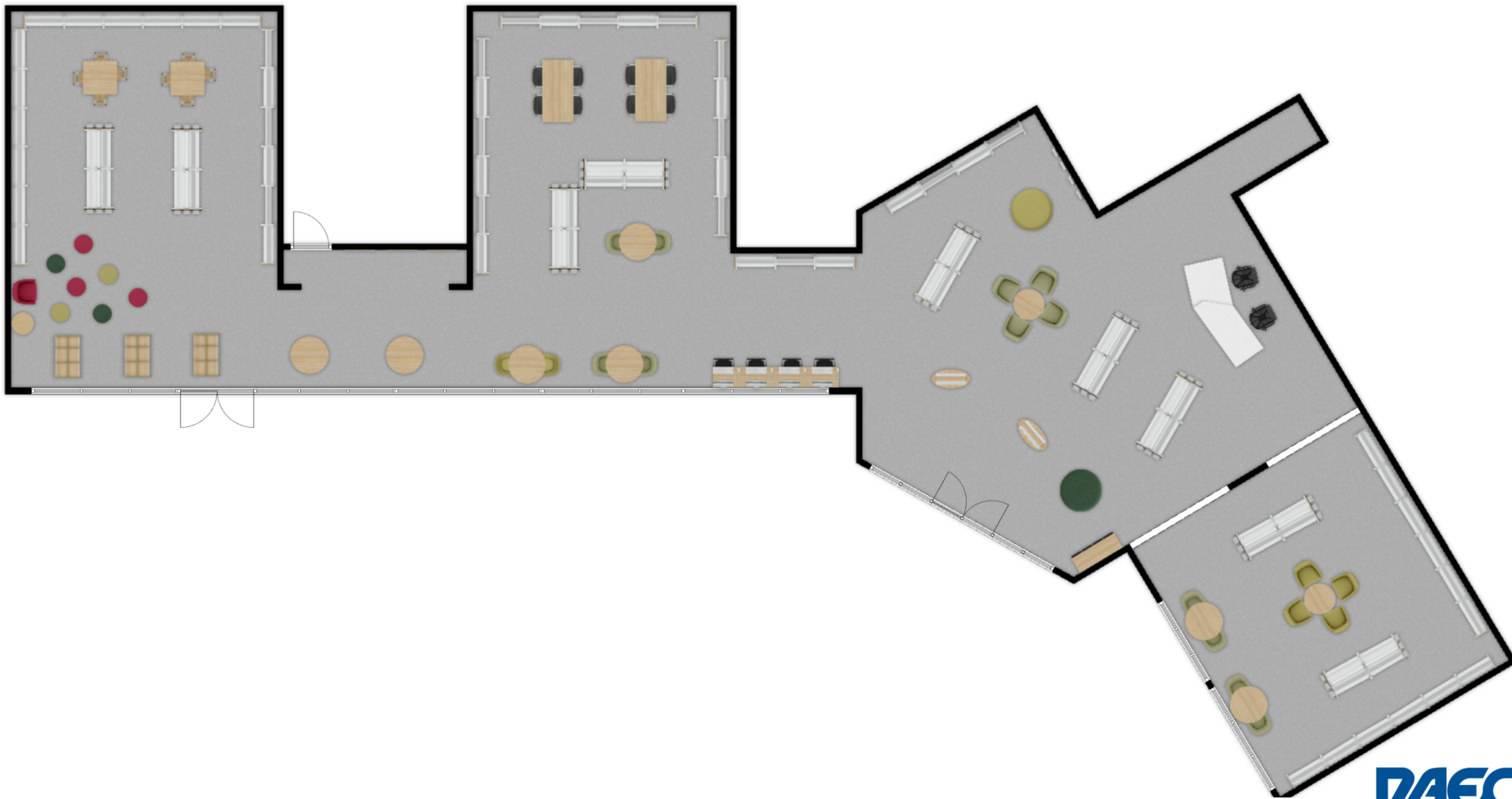


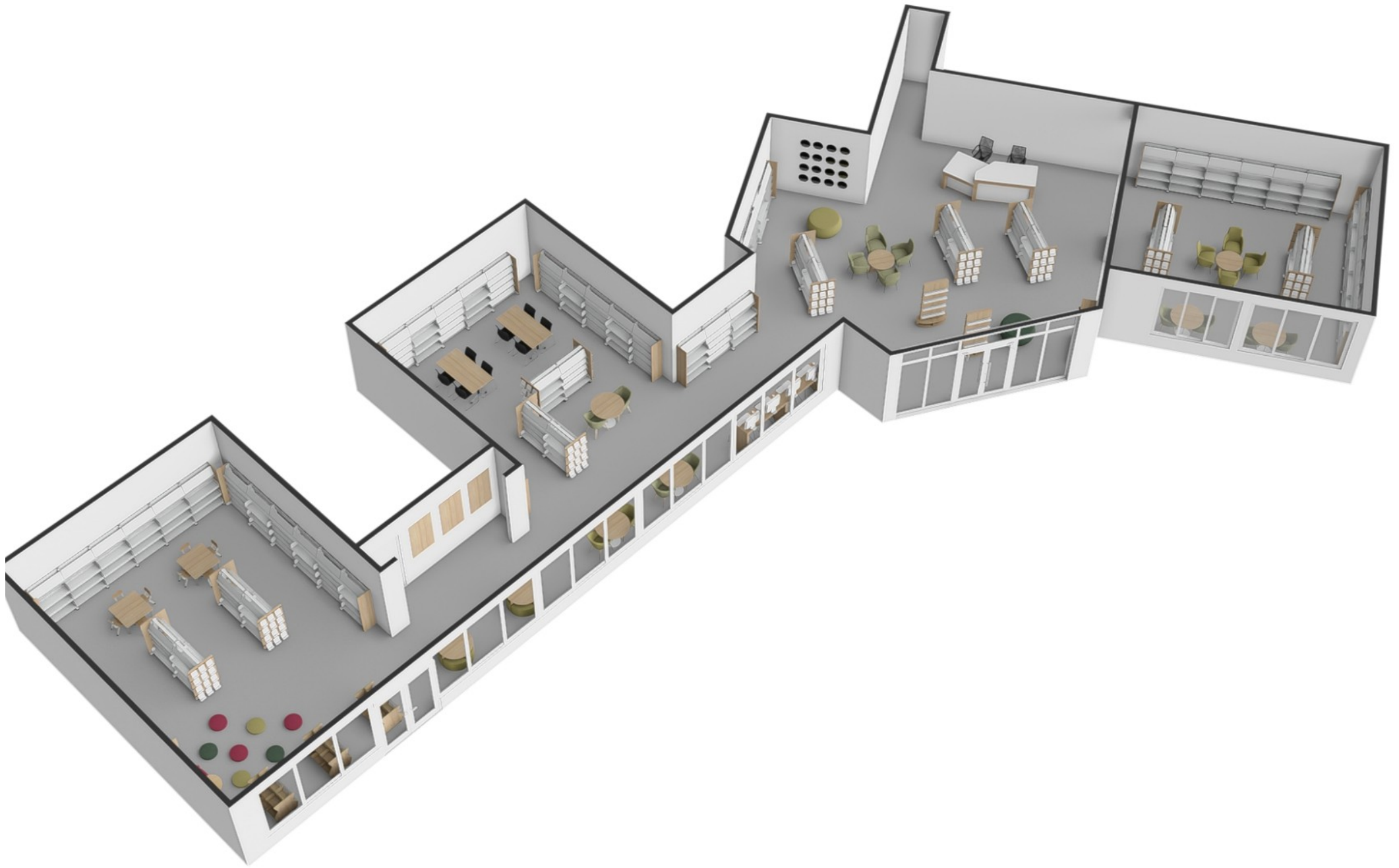
[KEVIN HENNAH]
.com.au

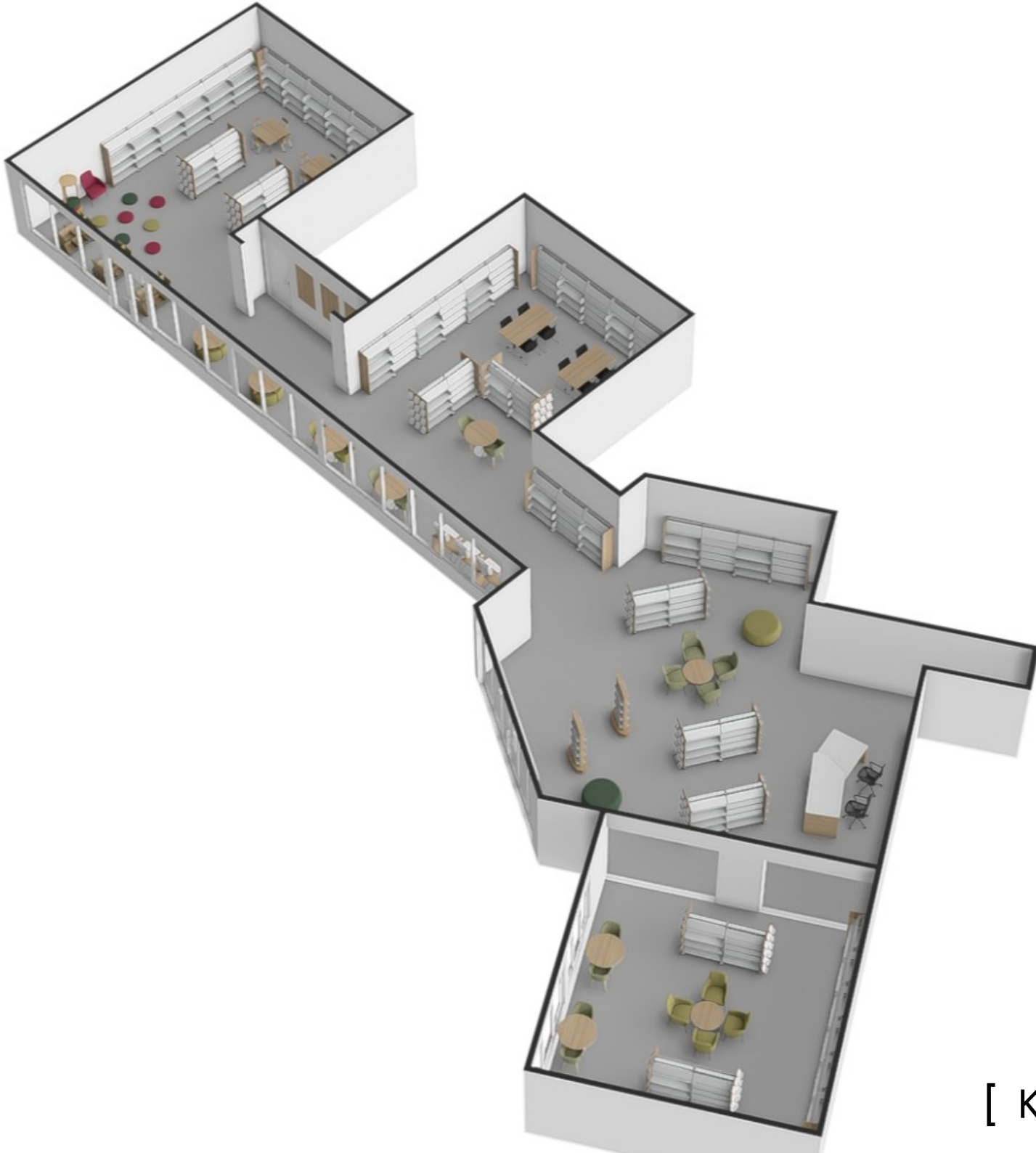
- The following renders were prepared by library supplier, RAECO. I briefed them on your needs and helped refine artwork.
- The renders are designed to illustrate the general look/feel achieved by my recommendations. There are a few minor differences between my report and the renders - as a result of software limitations. For example, individual acrylic book holders are shown on the shelving bay end panels, however I suggested you use acrylic shelves. Fabrics are not exact and the actual brick walls will add more 'warmth' and character. Of course, the books will add much colour and visual interest - especially with the number of display shelves specified. The following slides do however demonstrate the value in placing much of the collection to the walls. Most importantly, I hope they illustrate a vision of the completed fit out strategy.
- As I previously explained, if you decide to proceed with this supplier/quote, I recommend that we carefully cross reference my notes against the renders and importantly, the quote (I highlight this to for all projects). I am happy to do so, but it is also important that you also understand exactly what you are ordering - and I'm always happy to clarify if needs be.
- I also wanted to let you know that I am very happy with how this has come together and I think it's going to look great! I hope you agree.

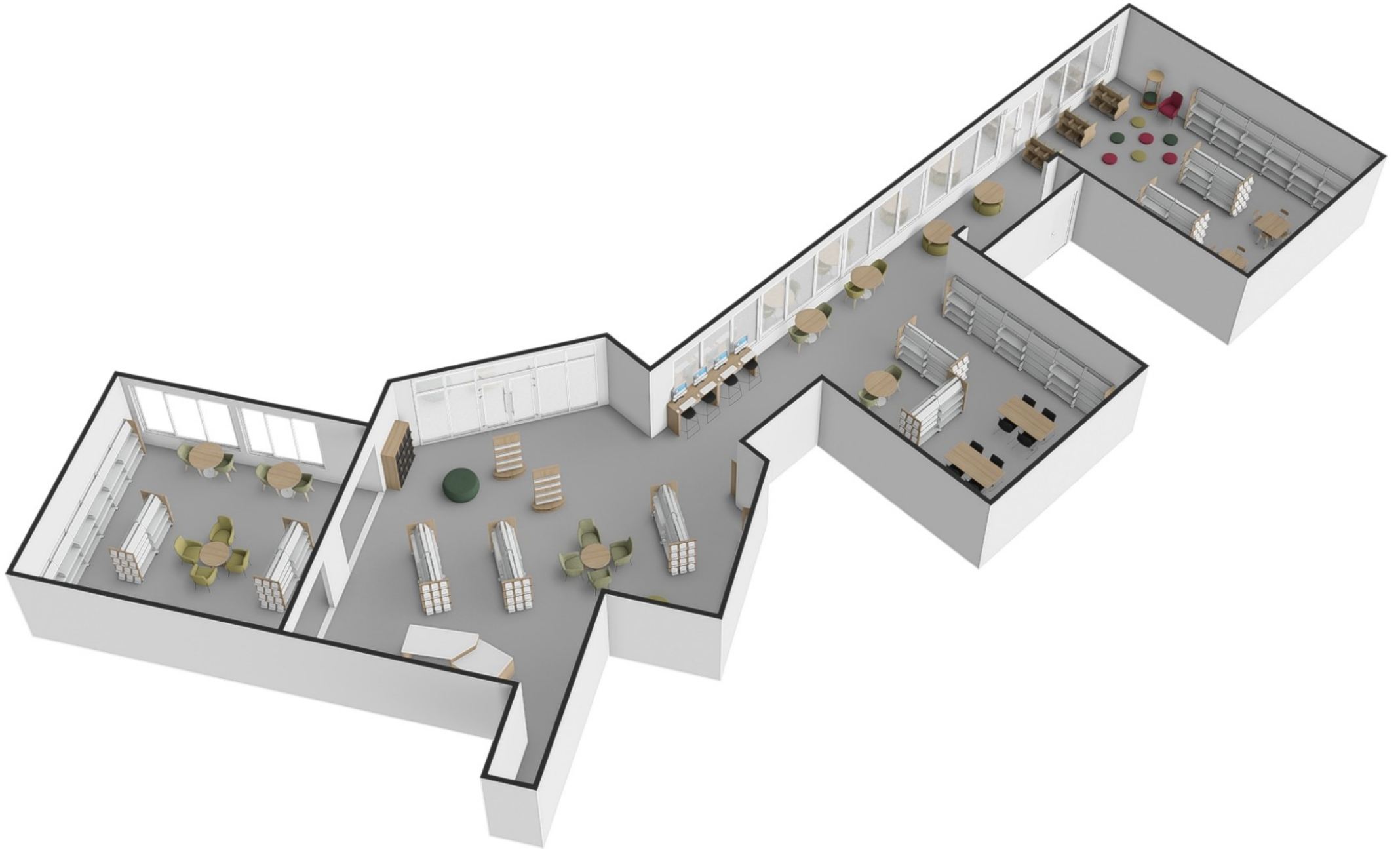


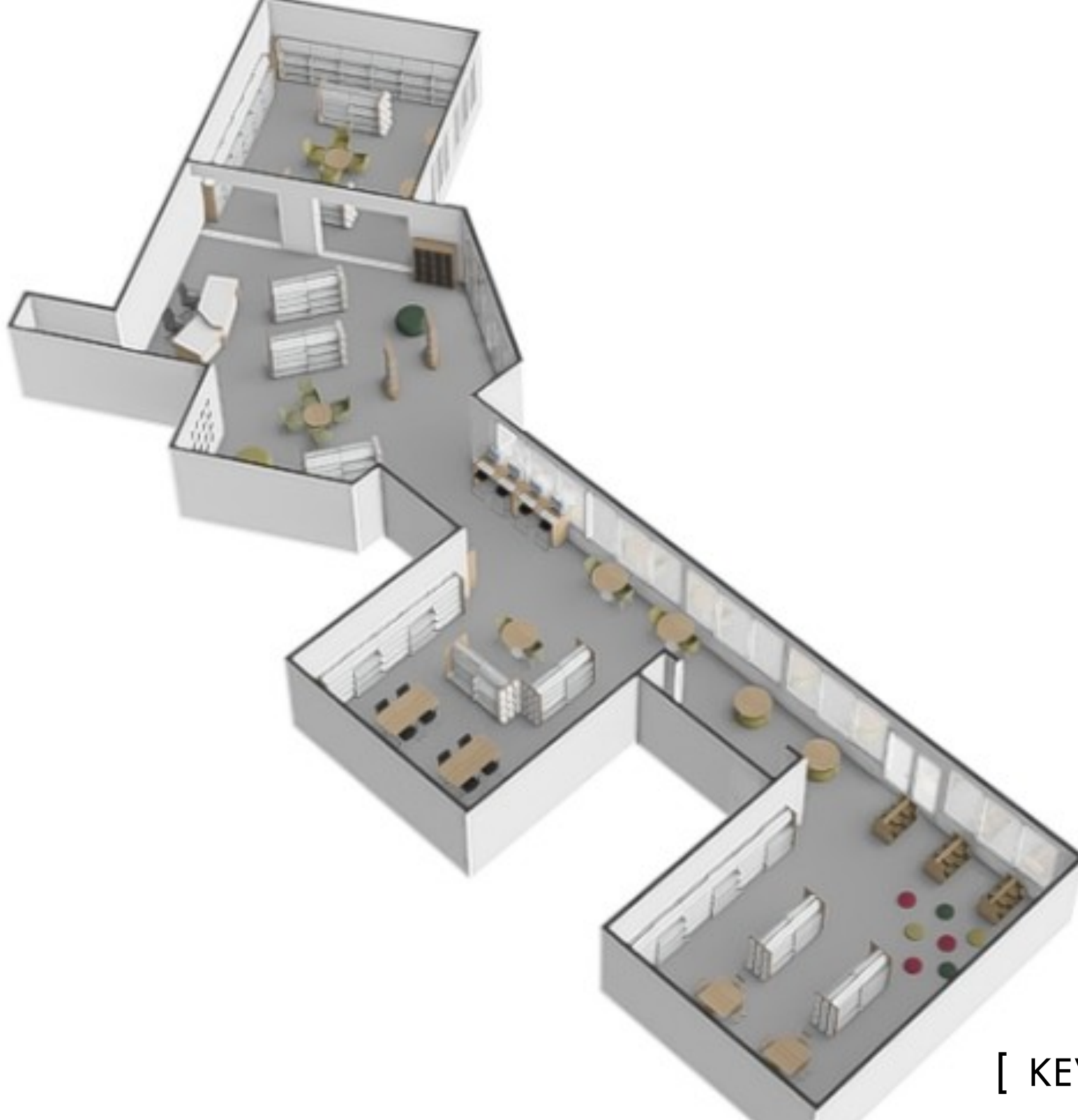
RAECO

[KEVIN HENNAH]
.com.au





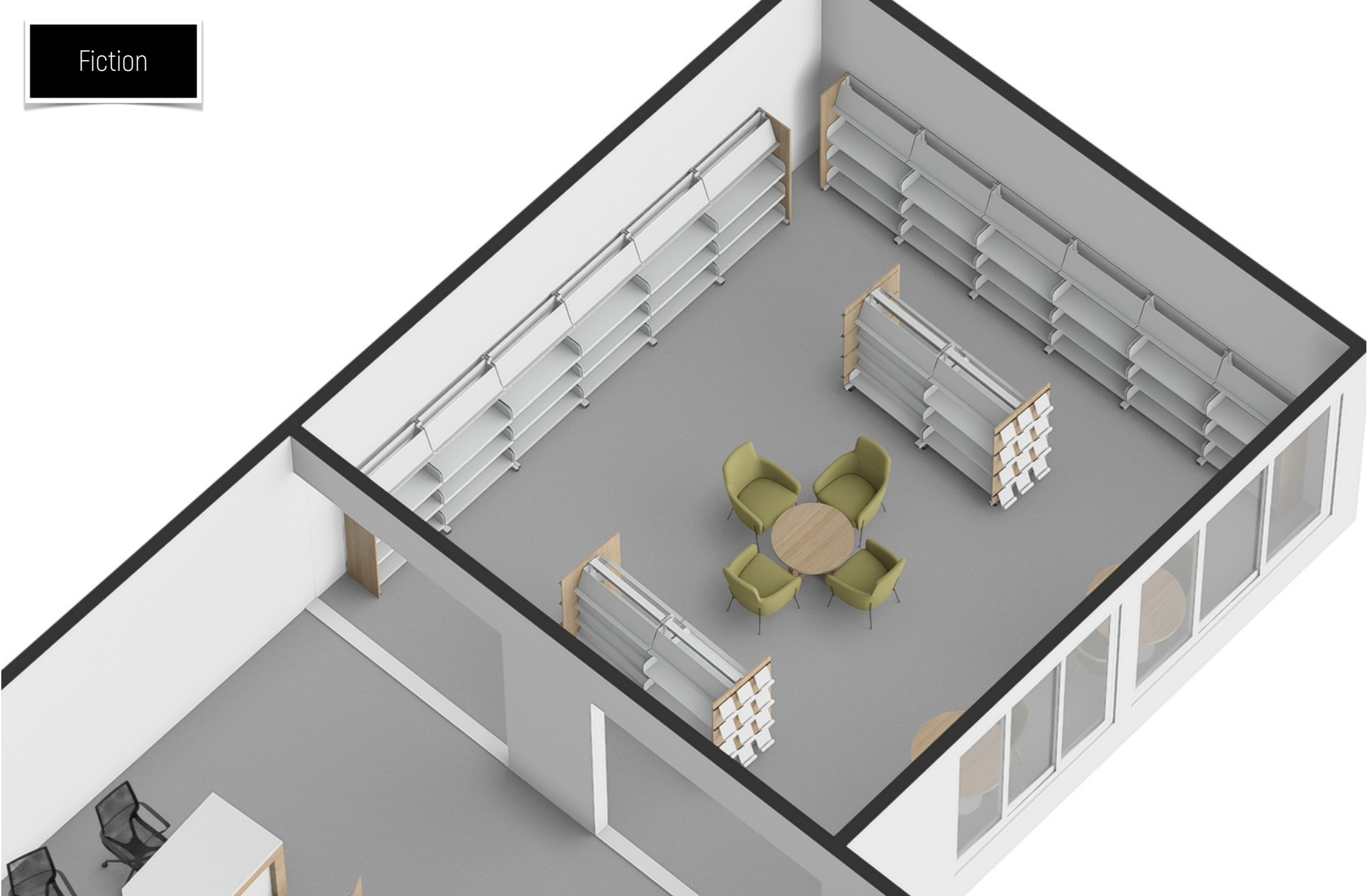




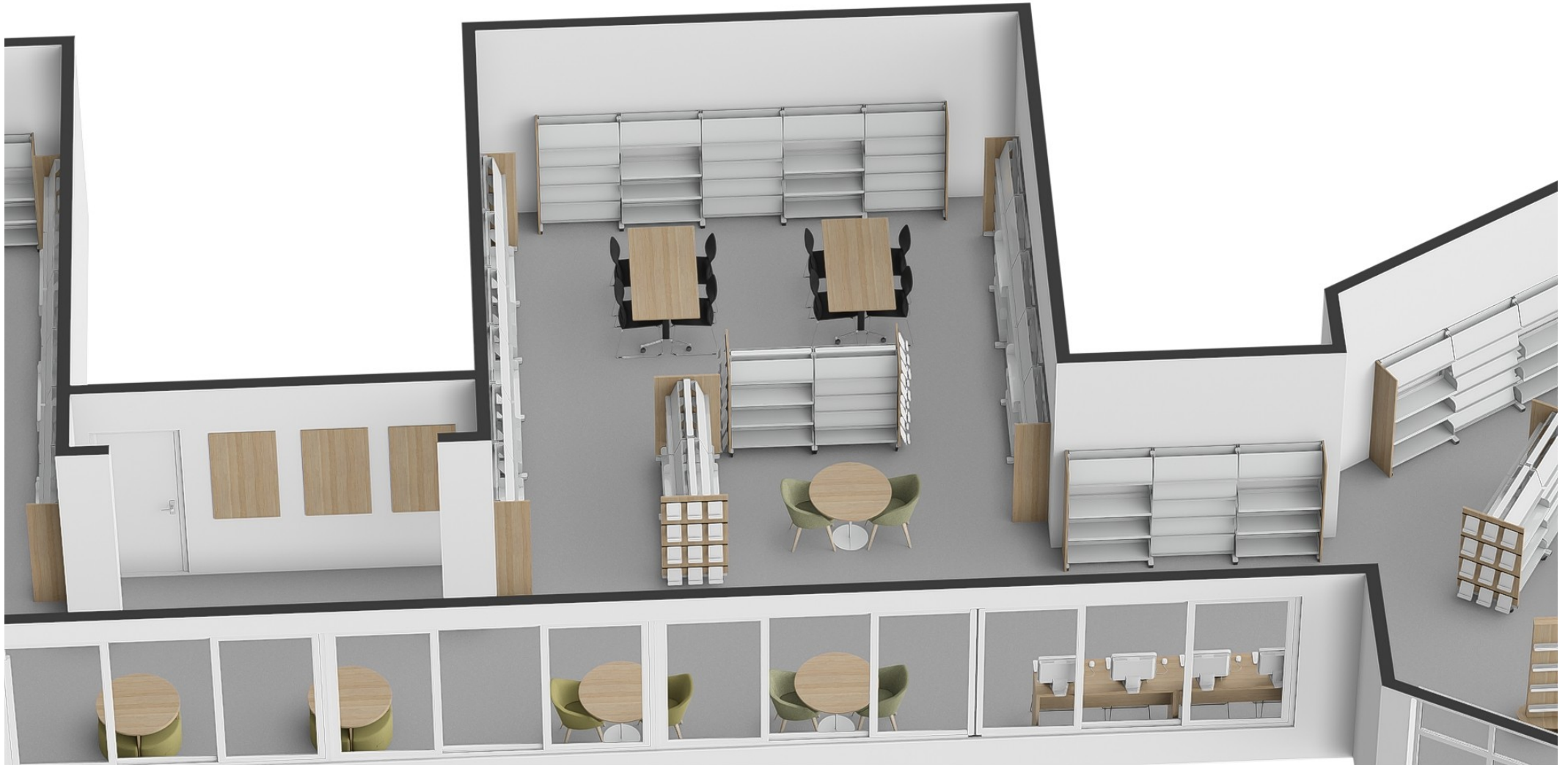
Entrance (Impulse, Bio & Popular Fiction)



Fiction



Nonfiction



Children/multi-use



Slatwall display boards would allow this space to be used for a multitude of applications.

Children



Children

