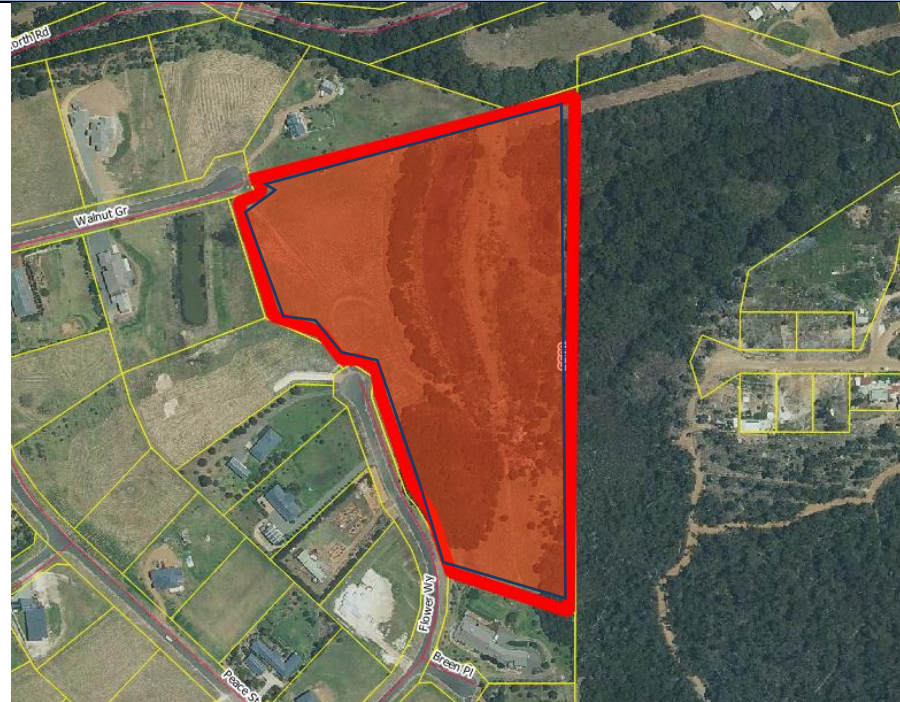


SS08 -Treatment ID number 5997



Location	Works Required in area Highlighted in red boundary
Walnut grove/Flower way R45884	<ul style="list-style-type: none"> • Widen/maintain existing fire access tracks to a minimum of 4m wide where possible 1m low fuel either side, plus remove over-hanging vegetation to 5m high, all lopping's and materials to be removed from site. • Slash open areas to 100mm • APZ standards around buildings • Upgrade fire access track to trafficable surface by grading and or fill with gravel • All disease risk protocols are to be followed (Phytophthora). ((refer document – Shire of Denmark Mitigation standards and terminology). • Remove all debris and waste material from the reserve.
Treatment Type	
Fire access/Low Fuel/APZ	
Size of Area/Length of Track	
1100m 5ha	