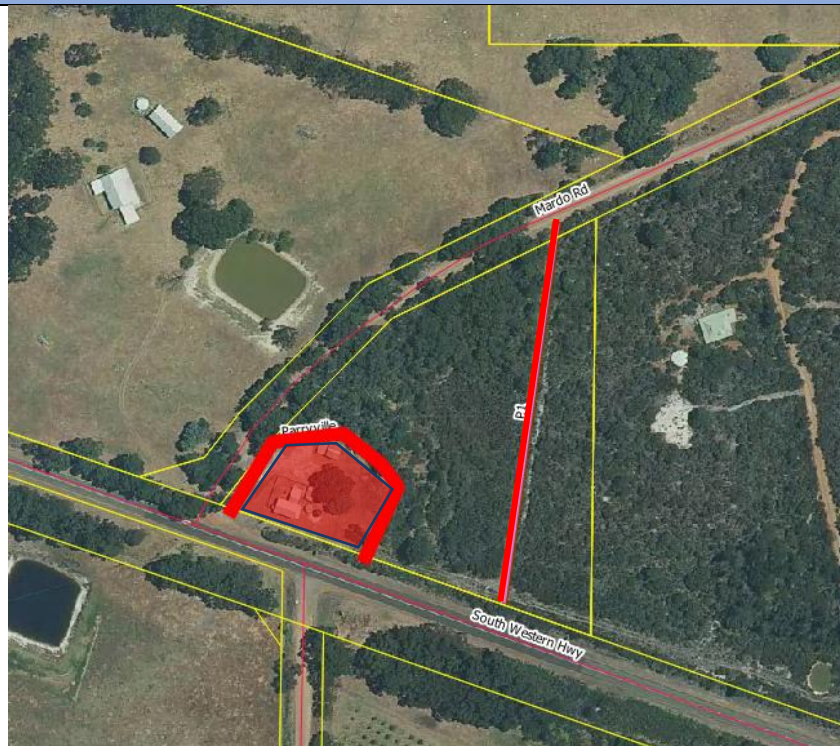


P1 -Treatment ID number 5952



Location	Works Required in area Highlighted in red boundary
Parryville Shed	<ul style="list-style-type: none"> <li>• Widen/maintain existing fire access tracks to a minimum of 4m wide where possible 1m low fuel either side, plus remove over-hanging vegetation to 5m high, all lopping's and materials to be removed from site.</li> <li>• Slash open areas to 100mm</li> <li>• APZ standards around buildings</li> <li>• Upgrade fire access track to trafficable surface by grading and or fill with gravel</li> <li>• All disease risk protocols are to be followed (Phytophthora). ((refer document – Shire of Denmark Mitigation standards and terminology).</li> <li>• Remove all debris and waste material from the reserve.</li> </ul>
Treatment Type	
Fire access/Low Fuel/APZ	
Size of Area/Length of Track	
.5ha 200m	