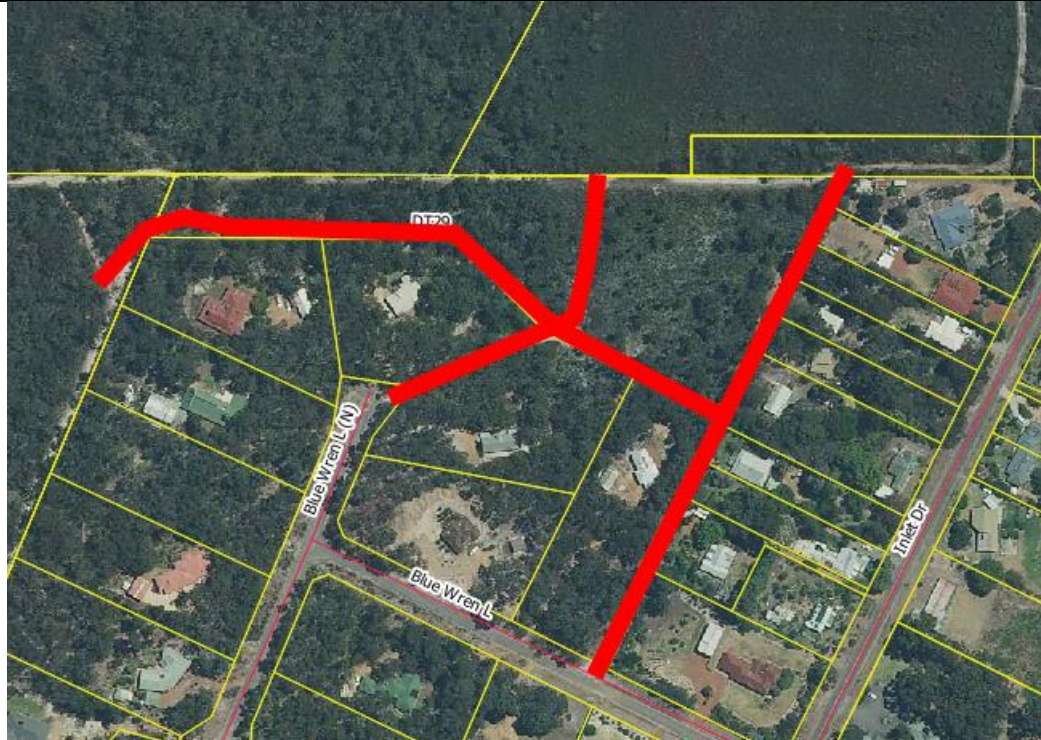


DT29 -Treatment ID number 5803



Location	Works Required in area Highlighted in red boundary
Rear Blue Wren Lane/ inlet Drive	<ul style="list-style-type: none"> • Widen/maintain existing road reserve/ Trail to a minimum of 4m wide where possible 1m low fuel either side, plus remove over-hanging vegetation to 5m high, all lopping's and materials to be removed from site. • All disease risk protocols are to be followed (Phytophthora). refer document – Shire of Denmark Mitigation standards and terminology. • Remove all debris and waste material from the reserve.
Fire Access	
Size of Area/Length of Track	
850m	