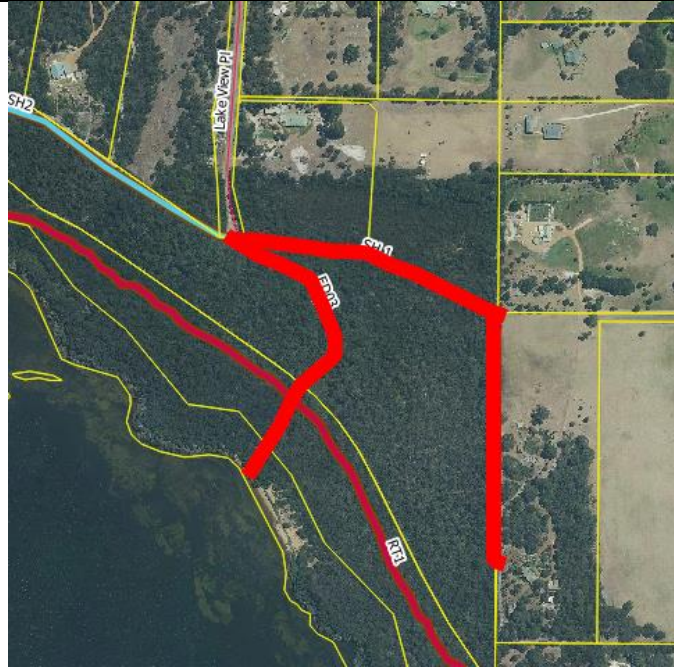


ED03 -Treatment ID number 5546



Location	Works Required in area outlined in Red
End of Lake View Pl , Springdale Heights	<ul style="list-style-type: none"> • Widen/maintain existing fire access tracks to a minimum of 4m wide where possible 1m low fuel either side, plus remove over-hanging vegetation to 5m high, all lopping's and materials to be removed from site. • Upgrade fire access track to trafficable surface by grading and or fill with gravel • Install water erosion treatments to reduce surface scouring under heavy rainfall. (refer document – Shire of Denmark Mitigation standards and terminology). • All disease risk protocols are to be followed (Phytophthora). (refer document – Shire of Denmark Mitigation standards and terminology). • Remove all debris and waste material from the reserve.
Treatment Type	
Fire access	
Size of Area/Length of Track	
1000m	