

# Community Fire Information Update

## Bayview Rise Fire, 07 February 2022, 1200pm

### Fire Status

- The fire has burnt approximately 2151 hectares
- The fire is contained and controlled
- Fire conditions are favourable today
- The bushfire is stationary.
- Winds will be west south westerly throughout the day.
- The fireground received rain overnight which has assisted firefighters on the ground, now the crews are concentrating on making the area safe for people to return.

### Number of Properties Impacted

- 4 residential properties have been lost, but 53 properties in the fire area have been saved. Some others have had minor damage.

### Notification of Property Loss

- A process to notify home and business owners of significant loss has been undertaken by DFES and the Shire of Denmark.
- Residents with significant losses have been contacted and are being supported by the Denmark shire and the Dept of Communities
- You will not be contacted if your home is considered habitable or has not been damaged. Our resources do not allow us to contact every person in the impacted area. We are working to get you home as fast as possible.

### Pets and Livestock Information

- For information about pets or livestock contact the Denmark Shire Ranger on 0488 909 650.

### Road Closures

Avoid the area and be aware of fire and emergency services personnel working on site.

A number of roads have been closed including:

- McLeod Road between Freds Road and South Coast Highway.
- the intersection of Glenrowan Road and Roberts Road.
- the intersection of Mount Shadforth Road and Sunrise Road.

- the intersection of Hodgsons Road and Roberts Road.
- Happy Valley Road south of Scotsdale Road to South Coast Highway.

The following roads have reopened:

- South Coast Highway is now open.
- Scotsdale Road is now open.

### Schools

All schools will be open tomorrow. Dept of Education are aware of road closures that affect school children between Walpole to Denmark and this is being worked through today and will be communicated with parents.

### Restricted Access Permits

- It is currently unsafe to enter the area affected by the bushfire. The fire front is still active. Power infrastructure has been impacted and trees are yet to be assessed for safety.
- As soon as the area is safe for people to return home, Restricted Access Permits will be made available to home and business owners and tenants.

### Weather Outlook

- South westerly winds and cooler temperatures, Winds throughout the day will be westerly and are predicted to get stronger this afternoon. For more weather information go to Bureau of Meteorology website: [www.bom.gov.au](http://www.bom.gov.au)

### Planned Actions

- Firefighters are on the scene, patrolling the area and consolidating containment lines on the northwest edge of the fire. Firefighters are walking the roads today to check for safety hazards prior to the roads reopening.
- 152 Bush Fire Service, Career Fire and Rescue Service, Volunteer Fire and Rescue Service, Volunteer Fire and Emergency Services and Parks and Wildlife Service firefighters are attending.
- Firefighters have saved 53 residential properties in the area..

Community Fire Information Update			
Version:	Issue Date:	Review Date:	Accountable Position:
1.2	Feb 06	Feb 2022	Director – Community Preparedness
			Uncontrolled When Printed

# Community Fire Information Update

- Shire of Denmark, State Emergency Services Volunteers, WA Police Force, Contractors, Western Power and Telstra Technicians are also in attendance.
- 61 support staff are also assisting from the Incident Management Team.

## Current Warnings

The fire has been downgraded to a Bushfire Advice - in an area bounded by Scotsdale Road, Barnes Road and McIntyre Road to the north, Mount Lindsay Road, Walter Road and Turner Road to the east, the coastline to the south and Kordabup Road, Bastiani Road and Parry Road to the west in parts of DENMARK, SHADFORTH, SCOTSDALE, MOUNT LINDESAY, MOUNT ROMANCE, HAY, PARRYVILLE, KORDABUP, AND KENTDALE in the SHIRE OF DENMARK

- There is no threat to lives or homes.
- Although there is no immediate danger you need to be aware and keep up to date in case the situation changes.
- Although the fire hazard has decreased, there are still safety concerns with strong winds and falling hazards. Please be careful if permitted to return to the area.
- An All Clear has been issued for all other surrounding areas

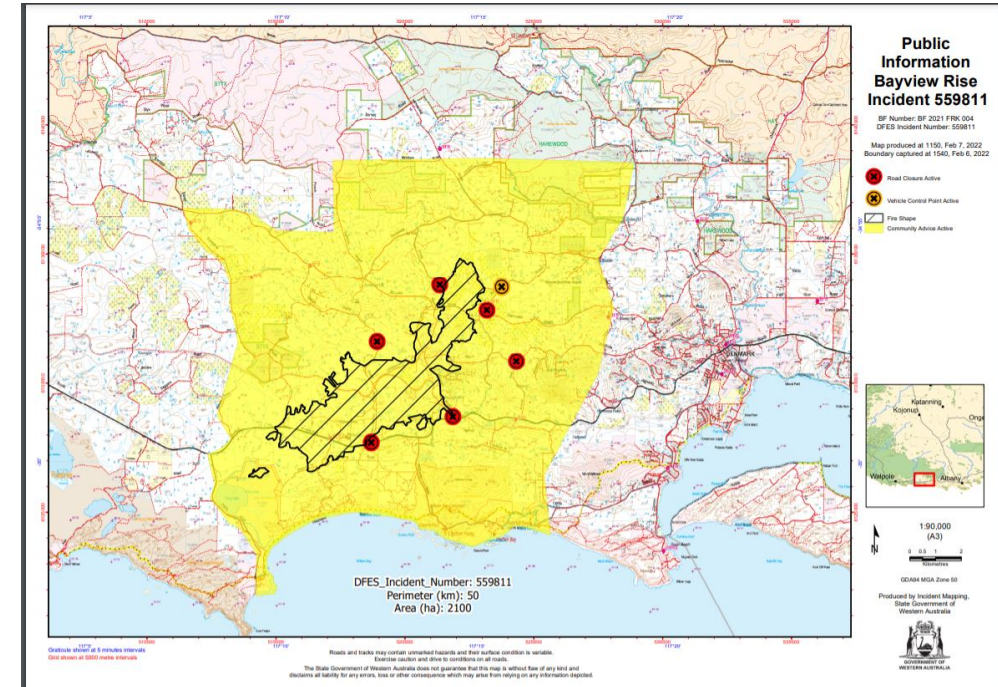
## Crisis Support Services

If you are struggling with any of the above and feeling that you need immediate support, you can also contact one of the following support lines:

- **Lifeline: 13 11 14** (support for people in crisis)
- **Crisis Care: 1800 199 008** (telephone information and referral for people experiencing crisis)
- **Rurallink: 1800 552 002** (Rurallink is a specialist after hours mental health telephone service for people in rural communities of Western Australia)

## Contacts

- Emergency WA - [Home - Emergency WA Warnings & Incidents](#)
- DFES information line 13 33 37
- Local ABC Radio



Community Fire Information Update			
Version:	Issue Date:	Review Date:	Accountable Position:
1.2	Feb 06	Feb 2022	Director – Community Preparedness

*Uncontrolled When Printed*