

Munda Biddi Trail



Department of Environment and Conservation



Premier Off-Road Cycle Touring

Denmark Shire Council 21 June 2011



Attachment 11.1 a)



Department of Corrective Services



ROYALTIES FOR REGIONS



Today's presentation



- What is the Munda Biddi Trail?
- Trail alignment considerations
- Trail alignment options
- Concept alignment to coast

What is the Munda Bididi Trail?

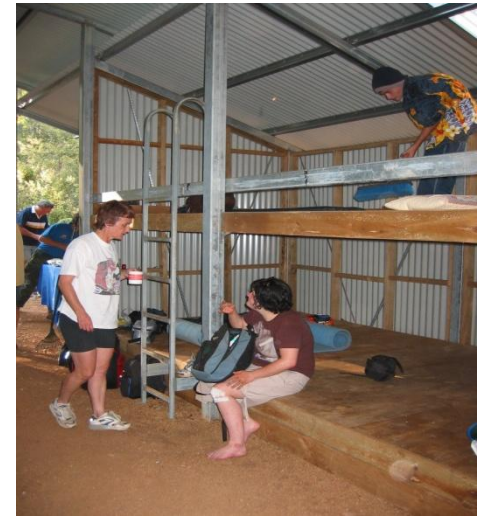
- Munda Bididi means 'bush track' in Noongar language
- A long distance off-road cycle touring trail – 1000km
- A safer and more scenic alternative to cycling on busy roads
- Caters for families, groups, beginners and experienced cyclists
- Links towns and communities
- Creating sustainable economic benefits for communities



Vision for the trail



'To create an iconic, sustainable and world-class off-road cycling trail that showcases the unique natural and cultural features of south west Western Australia.'



Trail types

1. Existing roads or tracks
2. Unused roads, relegated tracks or railway formations that have become overgrown
3. Purpose built single track (less than 10%)



Progress to date

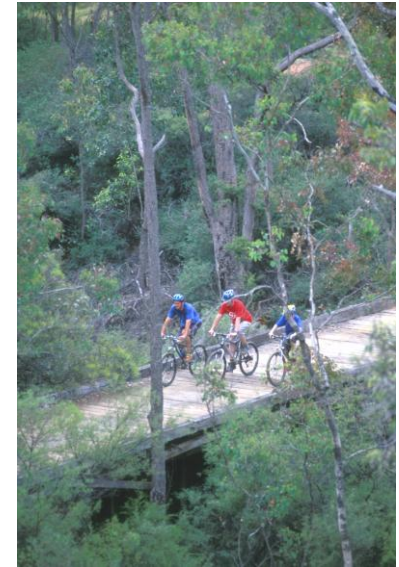


- Mundaring to Collie 332km (completed in 2004)
- Collie to Nannup 165km (completed 2008)
- Nannup to Walpole (construction commenced & in planning)
- Walpole to Albany (construction commenced & in planning)

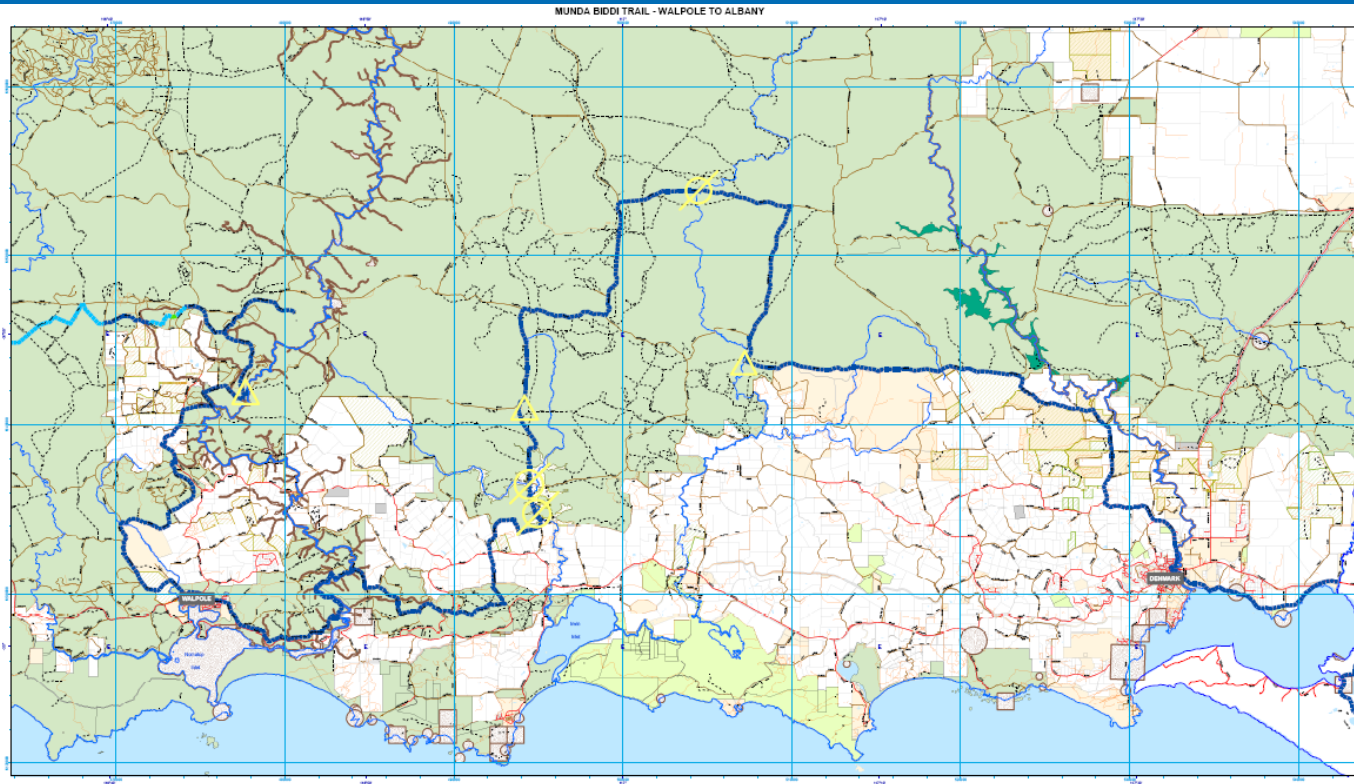
Trail alignment considerations

Provide an iconic experience while considering:

- Beautiful vistas and natural environments
- A touring trail (luggage of 20kg in pannier bags or trailer)
- Campsite every 35 – 45 km apart and away from town sites
- Low traffic roads and bush tracks, firebreaks and disused railway formations
- Purposed built single track (less than 10%)
- Predominantly gentle grades
- Avoid sandy & heavy clay soils
- Existing crossings and bridges where possible
- Erosion management
- Indigenous heritage and environmental sensitivities



Trail alignment options

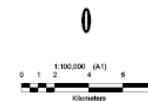


Legend

- | | | | |
|-----------------------------------|----------------------|-------------------|-----------------------------|
| — MBT (existing roads and tracks) | --- Relegated Tracks | ■ National Park | □ Freehold/Private Property |
| — MBT (re-open existing track) | — Tracks | ■ Nature Reserve | ■ Road Reserve |
| — MBT (new trail construction) | — Unsealed Roads | ■ State Forest | ■ Unallocated Crown Land |
| — Rivers | — Sealed Roads | ■ Thicket Reserve | ■ Aboriginal Sites |

Details shown at 1:100,000 scale
 1:100,000 scale shown

The Dept. of Environment and Conservation does not guarantee the this map is without fault or liability and disclaims all liability for any errors, omissions or other shortcomings which may arise from reliance on any information contained



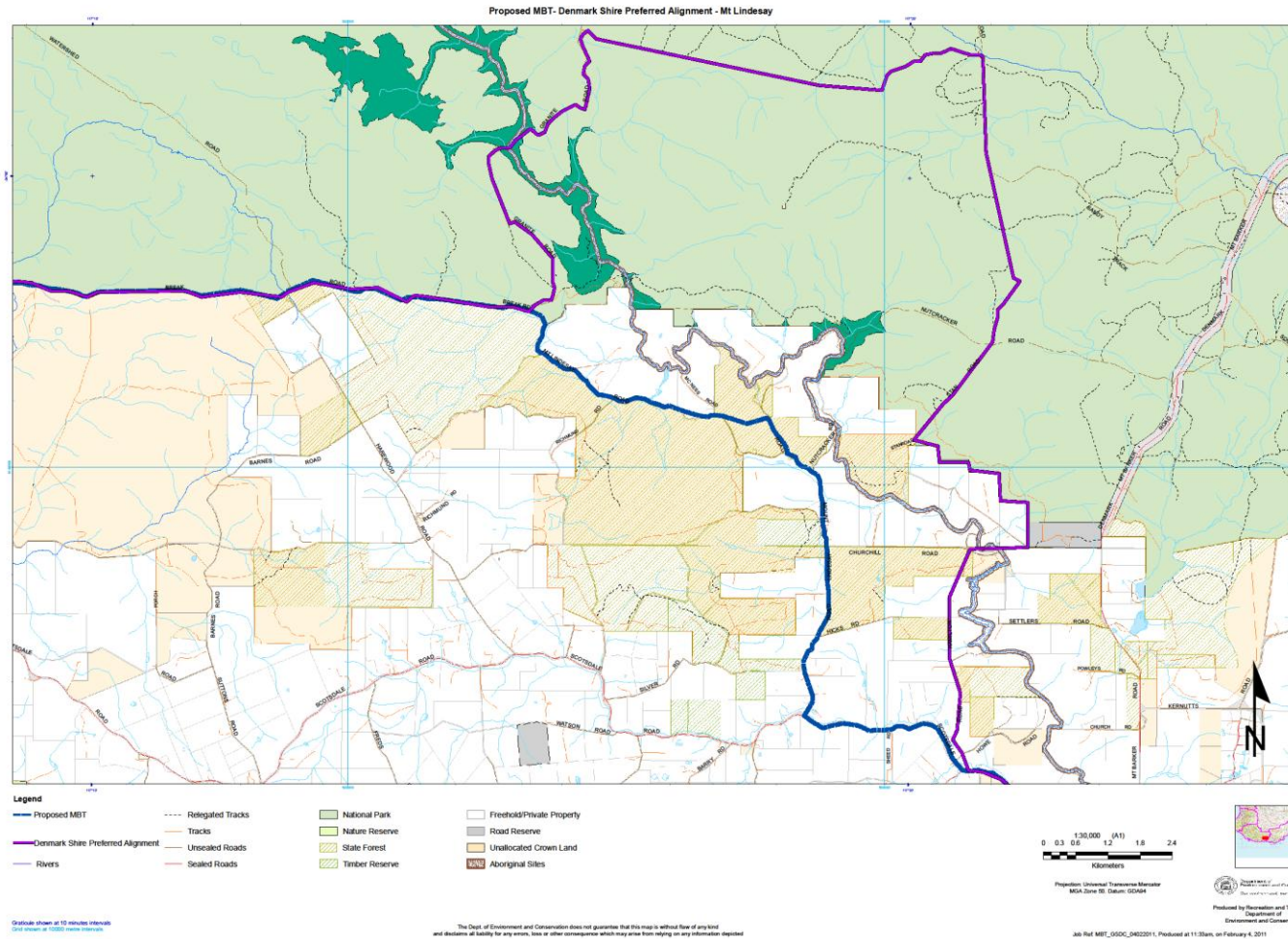
Project: Walpole-Tasmanian Inland
 WMA Zone 06, Status: 06/04



Department of Environment and Conservation
 Produced by Recreation and Trails Unit,
 Department of Environment and Conservation

Job Ref: MBT_GSDC_0402011, Produced at 11:33am, 14 February 4, 2011

Trail alignment options

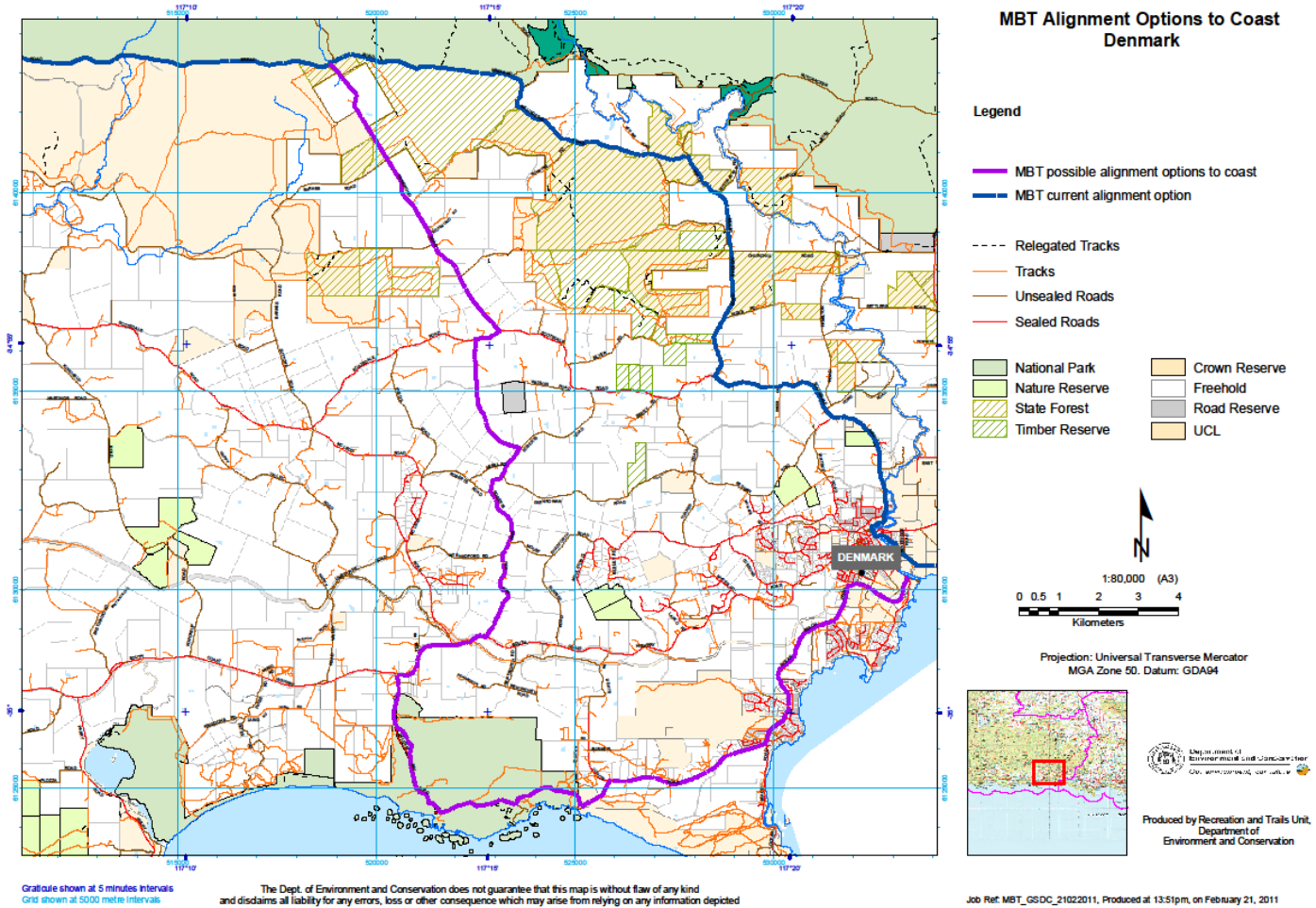


Concept alignment to coast

Main motivators;

- Environmental sensitivities of Mt Lindesay alignment;
- Coastal option for Munda Biddi Trail; and
- User experience

Concept alignment to coast



Further investigation required

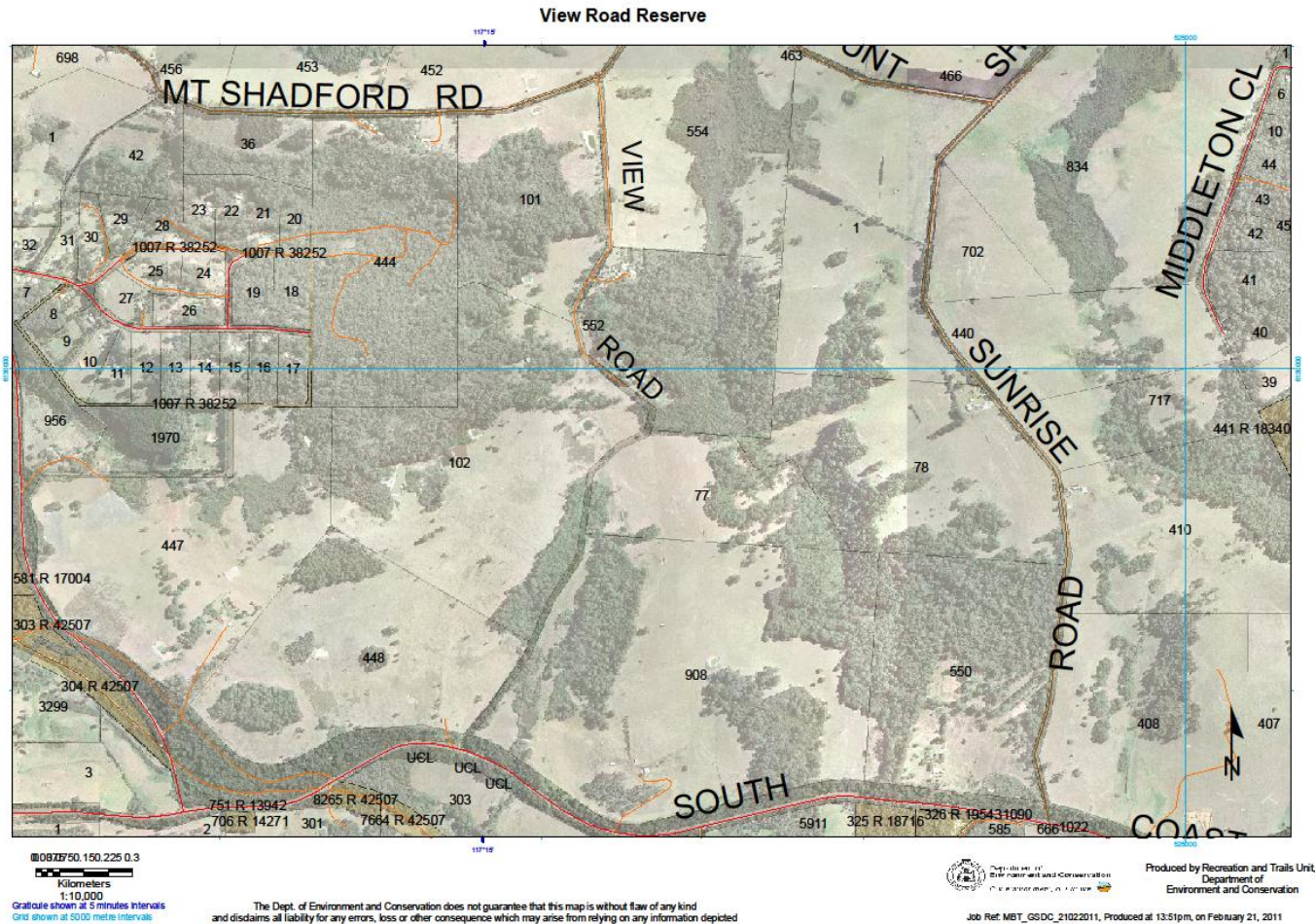
- Use of Shire reserves
- Approval from Main Roads WA to use South Coast Hwy road reserve
- Environmental impact evaluation
- Indigenous heritage approval - for sections of new trail
- Future trails planned for Lights Beach to Ocean Beach

For Council consideration

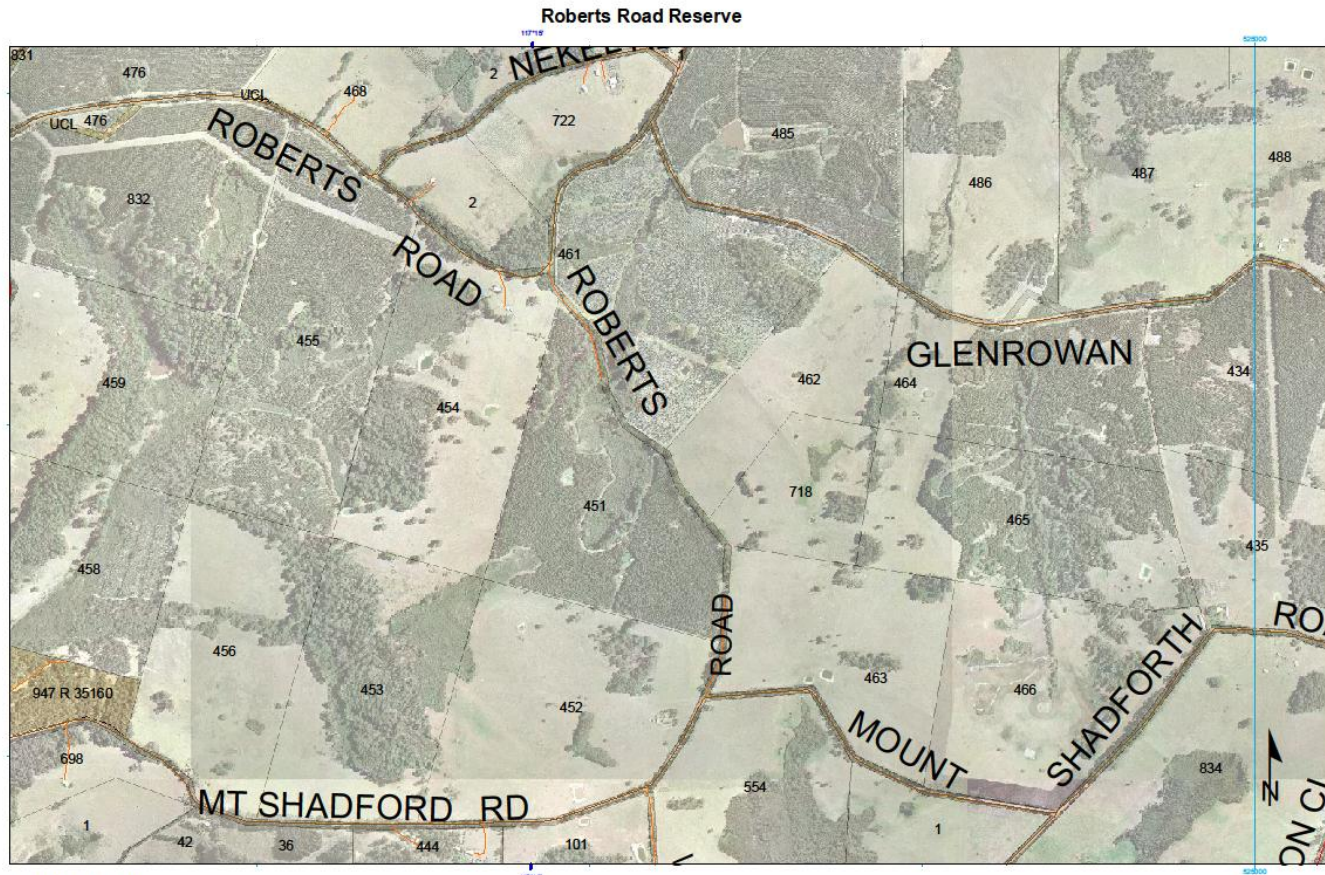
The possibility of the Munda Biddi Trail alignment through Shire reserves such as;

- View Road
- Roberts Road
- Reserve that connects Scotsdale and Roberts Roads

View Rd reserve

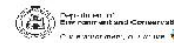


Roberts Rd reserve



0 0.0625 0.125 0.1875 0.25 0.3125 0.375 0.4375 0.5
Kilometers
1:10,000
Graticule shown at 5 minutes intervals
Grid shown at 5000 metre intervals

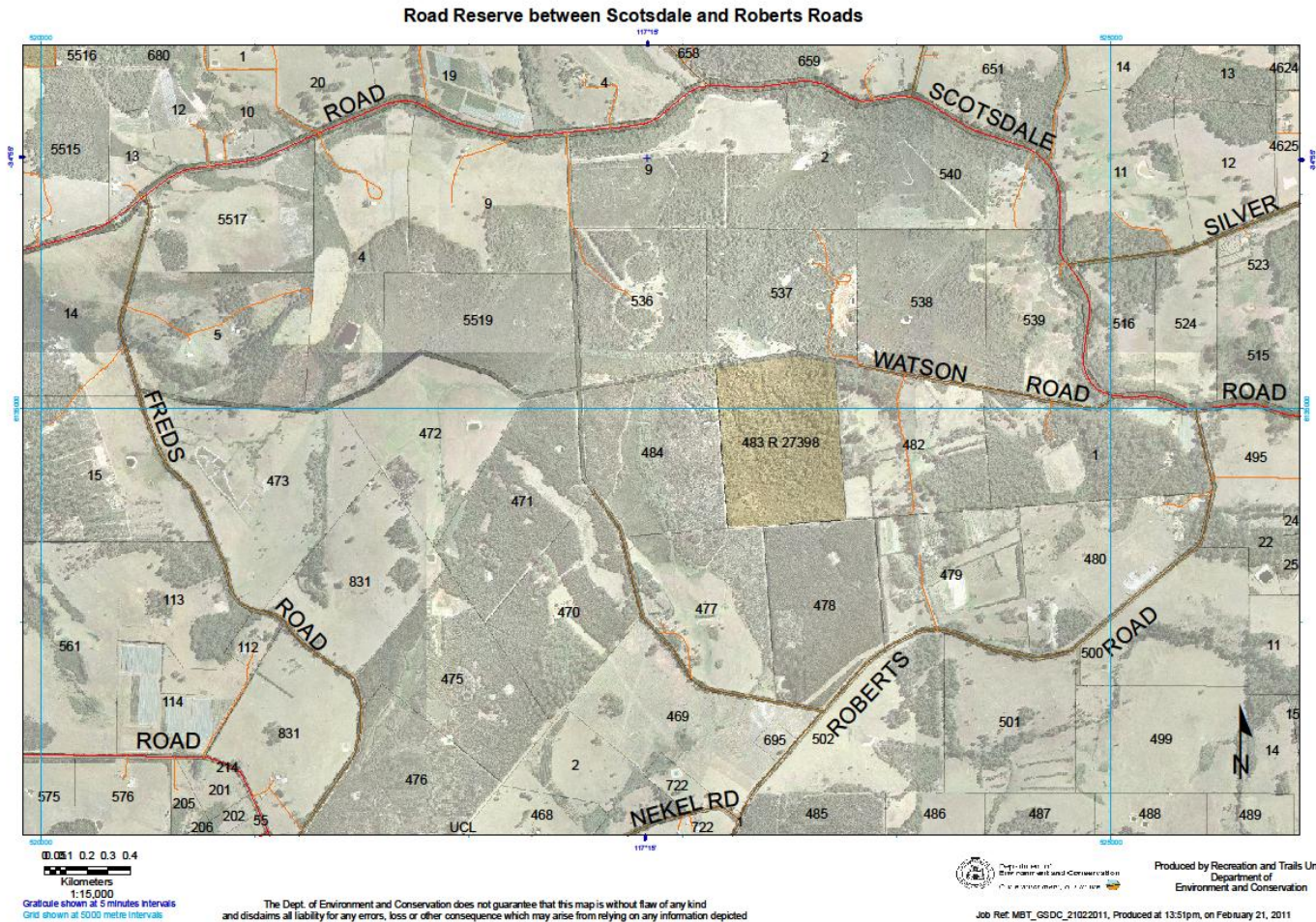
The Dept. of Environment and Conservation does not guarantee that this map is without flaw of any kind and disclaims all liability for any errors, loss or other consequence which may arise from relying on any information depicted



Produced by Recreation and Trails Unit,
Department of
Environment and Conservation

Job Ref: MBT_GSDC_21022011, Produced at 13:51pm, on February 21, 2011

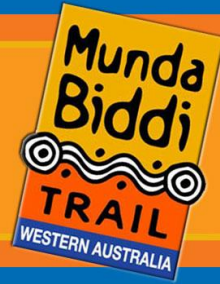
Road reserve – Scotsdale & Roberts



Munda Biddi Trail



Department of
Environment and Conservation



Alena Kessell
MBT Project Officer – Denmark to Walpole

p: 9842 4592 m: 0457 512 804
alena.kessell@dec.wa.gov.au

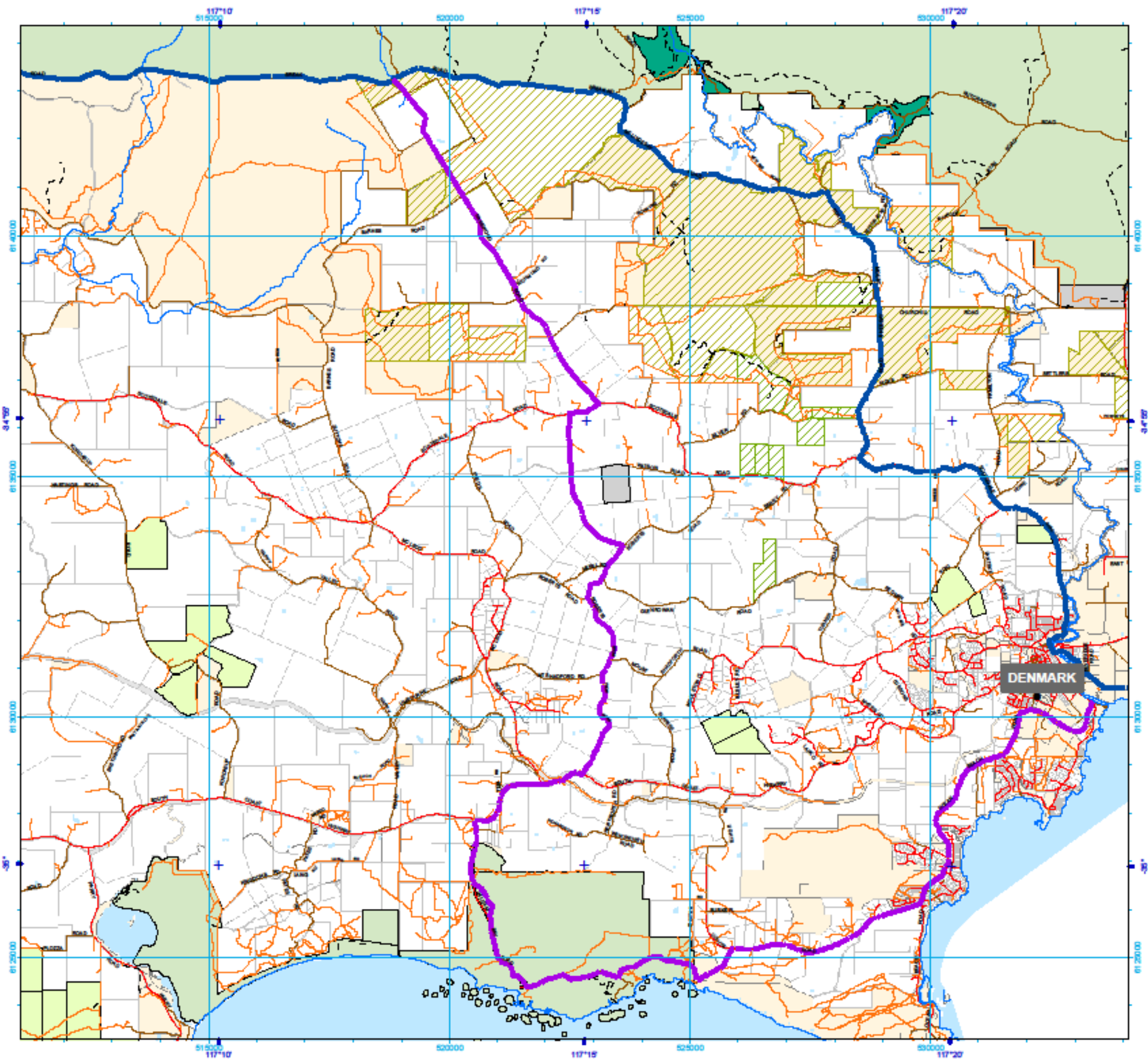


Department of Corrective Services



ROYALTIES
FOR REGIONS

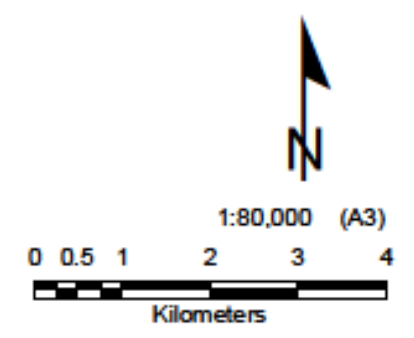




MBT Alignment Options to Coast Denmark

Legend

- MBT possible alignment options to coast
- MBT current alignment option
- - - Relegated Tracks
- Tracks
- Unsealed Roads
- Sealed Roads
- National Park
- Nature Reserve
- State Forest
- Timber Reserve
- Crown Reserve
- Freehold
- Road Reserve
- UCL



Projection: Universal Transverse Mercator
MGA Zone 50. Datum: GDA94



Department of
Environmental and Conservation
Our environment, our future

Produced by Recreation and Trails Unit,
Department of
Environment and Conservation

Graticule shown at 5 minutes intervals
Grid shown at 5000 metre intervals

The Dept. of Environment and Conservation does not guarantee that this map is without flaw of any kind
and disclaims all liability for any errors, loss or other consequence which may arise from relying on any information depicted