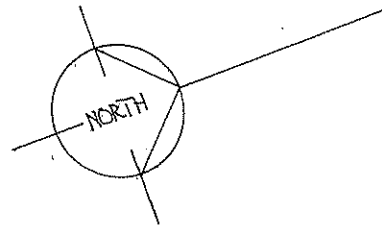


SITE PLAN 1:200

REMOVE VEGETATION FROM TANK LOCATION. LEVEL & LAY DOWN A MIN. 150mm SAND PAD x 5000 Ø. AFTER INSTALLATION LAY AROUND EDGE OF TANK A BLUE METAL GUTTER 250x40mm DEEP

SUPPLY & INSTAL PRESSURE PUMP FOR TANK. SUPPLY 10 AMP POWER SUPPLY. RUN WATER SERVICE LINE FROM TANK TO TEA PREP SINK. INSTAL A SECOND TAP DEDICATED TO RAIN WATER SUPPLY. AT TANK INSTAL A HOSE COCK

PRIOR TO COMMENCING WORKS CONFIRM LOCATION OF ALL ON SITE SERVICE/WASTE/STORMWATER LINES TO AVOID FUTURE DAMAGE TO SAME.



Attachment 9.1

OFFICE EXTENSIONS 7 MT SHADFORTH RD DENMARK FOR PALMER

MAXWELL DESIGNS

Building Design ABN: 13 846 760 378
PO BOX 31 DENMARK 6333

Date: JULY 10

Ph/Fax: 9848 3123 **OFFICE COPY** 10 AUG 2010 Drwg: WD 1A.

BALUSTRADES NOM 80x63 PROFILED H3 PINE HANDRAIL TRENCHED TO TAKE BALUSTERS, BOTTOM RAIL NOM 65x30 H3 PINE REBATED FOR BALUSTERS. NEWELS 70x70 H3 PINE SQ EDGE AT MAX 1800 CRS. BALUSTERS 42x32 H3 PINE AT MAX 1200 APART. 2/10mm Ø GALV BOG FIX NEWELS TO FASCIA BEARER. STEPS NEWELS 120x120 KAPUR LAM. SIDE & MID SPAN STRINGERS 290x45 H3. MID SPAN STRINGER CUT TO PROFILE & SET BEHIND TREADS. OPEN TREADS 290x45 H3. STRINGERS SAT ON GALV SHOES CAST IN 300x300x300 DEEP CONC. PALL FOOTINGS.

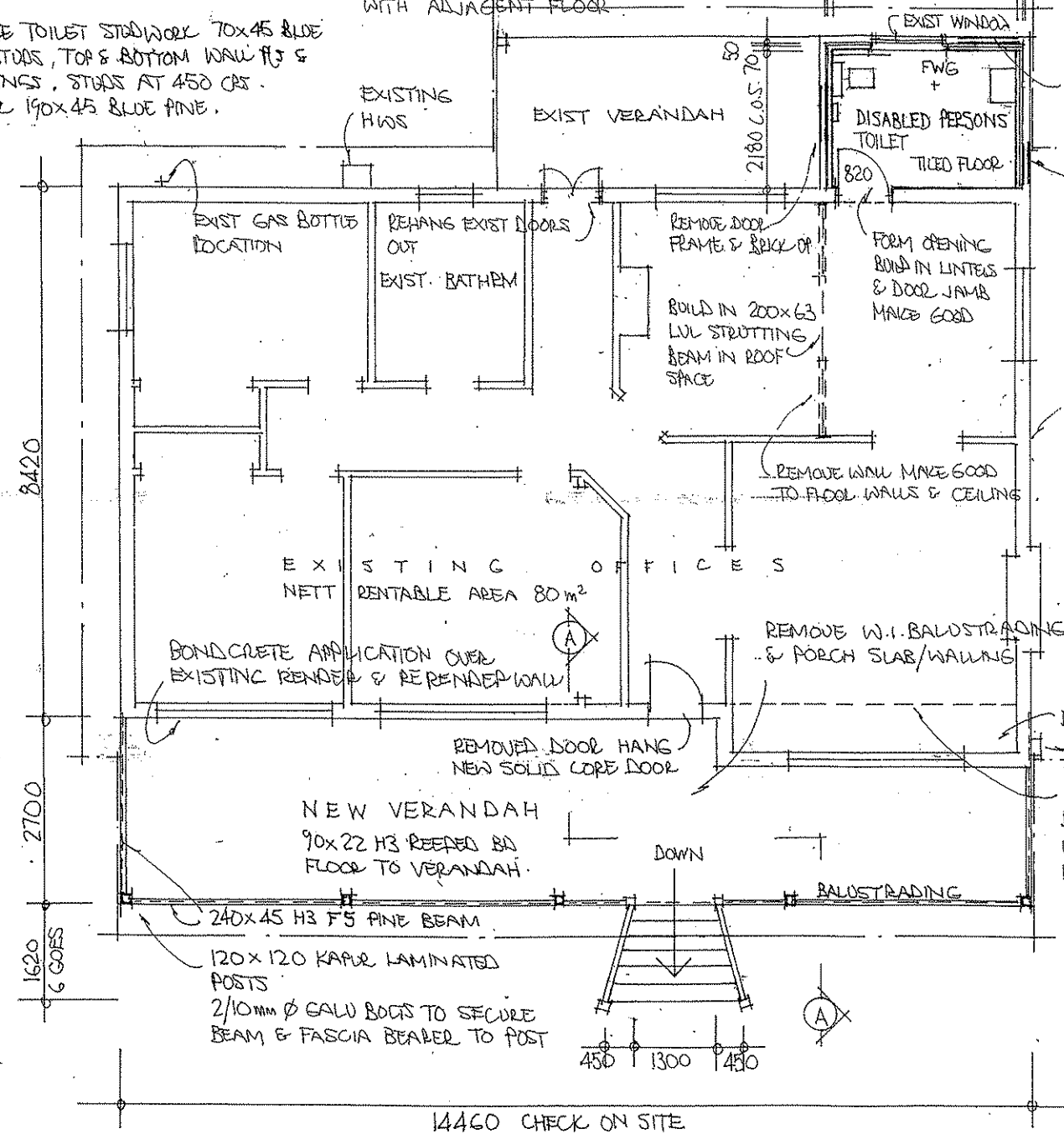
REMOVE LOUVER FROM DISABLED TOILET WINDOW REGLAZE WITH OBSCURE FIXED SAFETY GLASS.

DISABLE TOILET STUDWORK 70x45 BLUE PINE STUCCO, TOP & BOTTOM WALL PLS & NOGGINGS, STUCCO AT 450 CRS. LINTEL 190x45 BLUE PINE.

GRADED 70x45 H3 FL JOISTS AT 450 CRS DYNA ROUTED TO EXISTING CONC FL AT 900 CRS. HARLIES WET AREA T&G SCYON FL PANELS SCREW FIXED TO FL JOISTS TO FORM NEW TOILET FLOOR. FINISH FLUSH WITH ADJACENT FLOOR.

90x22 H3 REEDED BBS. REEDED SIDE EXPOSED LAID 5mm APART FIXED VIA 5/5 TWIST NAILS. FLOOR JOISTS 190x35 H3 AT 450 CRS. 190x35 H3 NOGGINGS MID SPAN & AGAINST WALL. 90x90 H5 PINE STUMPS AT MAX 1200 CRS. ON 190x35 H5 SOLE PLS 300 LONG. STUMPS IN END A MIN 450. TREAT STUMP BASES & SOLE PLS AGAINST WHITE ANT ATTACK VIA A PROPRIETARY APPLIED AGENT. 90x90 H5 MID SPAN STUMPS TO END RETURNS TO PICK UP DOG BBS. 90x45 H3 VERT P. DYNABOLT FIXED TO BRWK TO PICK UP & SECURE ENDS OF DOG BBS. 240x45 H3 F5 FASCIA BEARER WITH 70x35 H3 JOIST SUPPORT P. BOLTED TO BACK SIDE OF BEARER 10mm Ø GALV BOLTS AT 900 CRS. CHECK JOISTS OVER SUPPORT P.

REMOVE ROOF TILES & NORTH FACING HIP ROOF PROTRUSION. FIT NEW 90x45 MSP10 RAFTERS AT 900 CRS TO INFILL GAP FORMED. ROOF TILE BATTENS MAY REMAIN. FIT NEW 70x35 MSP10 ROOF PURLINS AT MAX 900 CRS TO WHOLE OF ROOF. LAY COLORBOND CORE ROOF SHEETING OVER WHOLE OF ROOF. TORTURE ROOF SHEETS OVER PITCH CHANGE AT JUNCTION OF MAIN ROOF & VERANDAH ROOF. RIDGE & HIP FLASHINGS ROLLED TOP FLASHINGS. BARGE FLASHINGS E TYPE. NOTE EXISTING LEADER GUTTER FASCIA BBS & BOXED ENDS TO REMAIN.



CONCAVE SHAPED BARGE FLASHING END TO PROFILE TORTURED ROOF SHEETS. REMOVE DOOR FRAME & BRICK UP.

REMOVE WINDOW & BRICK UP. EXISTING GUTTER FASCIA & BOXED ENDS.

SAND FINISHED RENDER ALL EXT BRICKWORK ALL ROUND. 90x90 H5 STUMPS AT MAX 1200 CRS BEHIND.

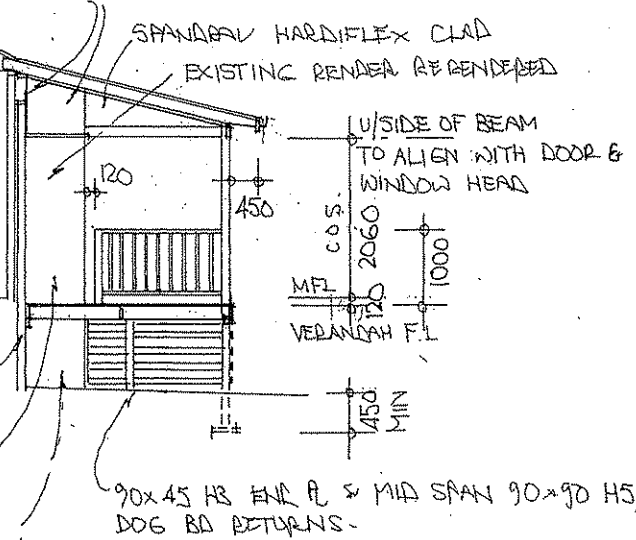
STREET ELEVATION 1:100

NEW ROOF CLADDING EXISTING ROOF FRAMING. 6mm VILABOARD DIRECT GLUED TO RENDER & SECURED TO 90x35 H3 TRIMMERS. VILABOARD TO ABUTT 84x16 SCYON TRIM STRINGLINE SECURED OVER RENDER.

REMOVE W.I. BALUSTRADES & PORCH SLAB/WALLS. EXISTING WALL PLATE. DROP CL AT 2600. EXIST. ELECT METAL BOX. FORM UP BULKHEAD & DROP CEILING. TRIM OUT WITH 90x35 MSP10. 10mm GYPROCK CLAD.

90x45 H3 F5 P. TO PICK UP JOISTS. 10mm Ø X100 DYNABOLT FIX TO EXISTING BRWK. AT MAX 900 CRS. EXISTING BRWK DADO RENDERED.

SECTION A.A.



VERANDAH. RAFTERS 140x45 MSP10 AT MAX 900 CRS. TRIM ENDS FINISH 90x45. ROOF PURLINS 70x35 MSP10 AT 900 CRS MAX. 90x35 H3 TRIMMERS OVER EXTERNAL BRICK LEAF TO TAKE VILABOARD. 90x35 H3 TRIMMERS TO FORM UP END SPANDRAX CLAD SPANDRAX WITH HARDIFLEX BOTH SIDES. DRESS HARDIFLEX OVER BEAMS. 175x30 H3 FASCIA & BARGE BBS. COLORBOND COLONIAL PROFILE EAVES CUTTER PLANTED ON FASCIA BBS. 38x38 JH SCOTIA GUTTER SUPPORT BEAD.

VERANDAH SOFFIT LINING. 6mm VILABOARD ON 70x35 MSP10 CL BATTENS AT 600 CRS ON U/SIDE OF RAFTERS. 38x38 JH SCOTIA CORNICE. CONTROL JOIST TO MANUFACTURER SPECIFICATIONS.

WALLS OF DISABLED TOILET LINED INT WITH 10mm AGOACHEK GYPROCK OVER NEW STUDWORK & WINDOW REVEALS. DIRECT GLOE OVER EXISTING BRICKWORK TO TOILET/OFFICE WALL & DOOR REVEALS. DOOR SOLID CORE FLOSH PAINT GRADE IN MDF JAMB, JAMB HEAD & SILW SEALS.

MAKE GOOD TO EXISTING CEILING IN DISABLED PERSONS TOILET TRIM OUT AS REQUIRED. PRIOR TO REROOFING LAY IN CEILING SPACE R.2.0 POLYESTER BATTIS OVER CEILING & AIR CEIL FOIL OVER RAFTERS.

OFFICE RENOVATIONS 7 SHADFORTH RD DENMARK FOR PALMER

MAXWELL DESIGNS

Building Design ABN: 13 846 760 378
PO BOX 31 DENMARK 6333

Date: JULY 16
Dwg: WD & A.
10 AUG 2010

Ph/Fax: 9848 3123