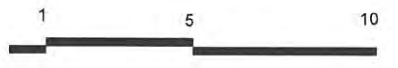


ground floor plan



barnett street

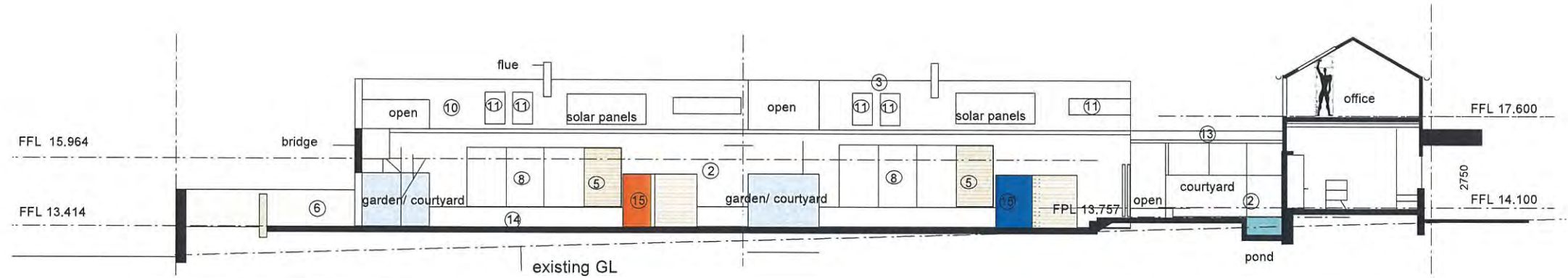
- revision 5/04/18
- 1 swapped disabled bay
- 2 window to bar shown in plan
- 3 residential RWT removed/ RWT to service yard concealed behind fence
- 4 wall height 14.514

proposed development 89
strickland street denmark

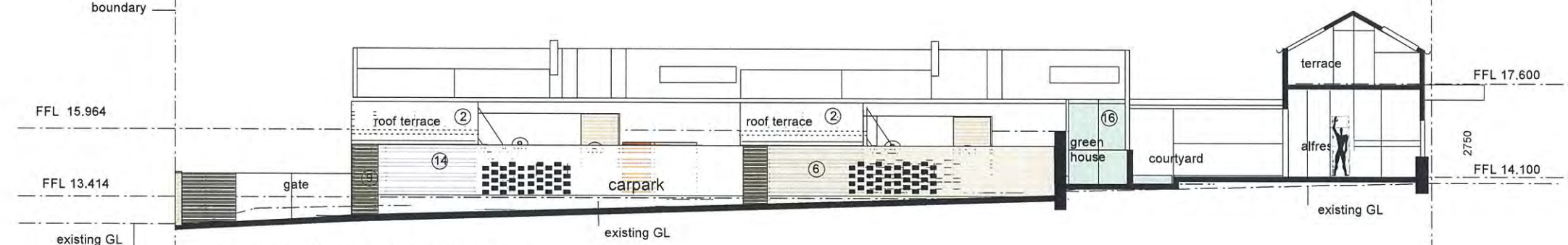
mjba
12 anacapri rd hillarys 6025
0407443836
e mjba2arch@westnet.com.au
27/01/2018

scale 1/200 SD .02

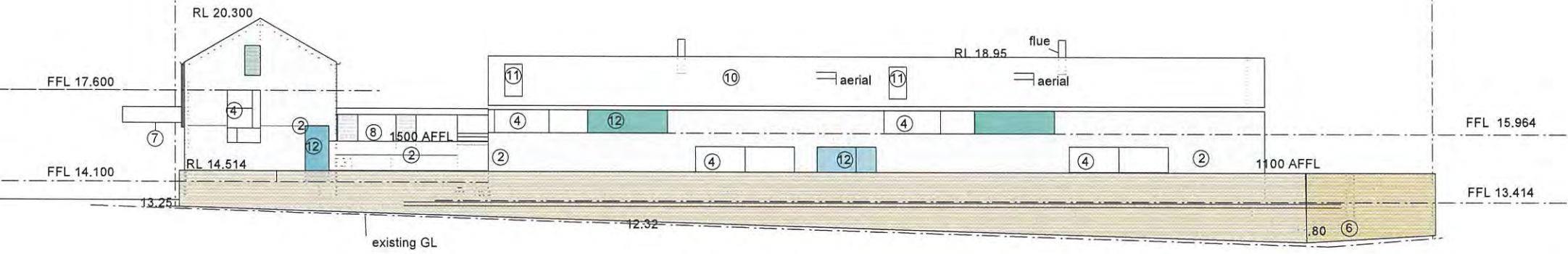




north elevation residential



section through carpark/ courtyard/ cafet terrace / north -west elevation residential



south east elevation

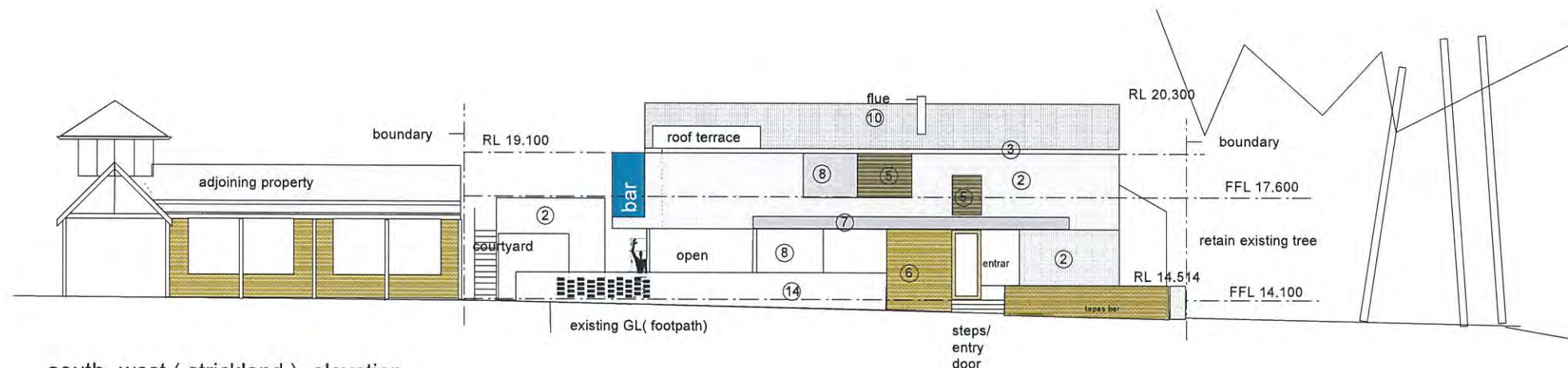
- key**
- 1 rendered masonry
 - 2 painted CFC sheet scyon axon vertical lining board
 - 3 zinalume 1/2 round gutter
 - 4 natural anodised windows
 - 5 metal louvre sun/ fire proection (with mesh backing)
 - 6 face brickwork
 - 7 painted steel
 - 8 charcoal metal windows
 - 9 vertical metal deck / colour warm grey / charcoal
 - 10 zinalume customorb roof at 30 deg
 - 11 skylight
 - 12 painted metal fire shutter / door
 - 13 zinalume roof at 2 deg
 - 14 painted common brick/ part
 - hit & miss
 - 15 paint finish
 - 16 toughened glass

RECEIVED
 5 APR 2018
 BY: _____

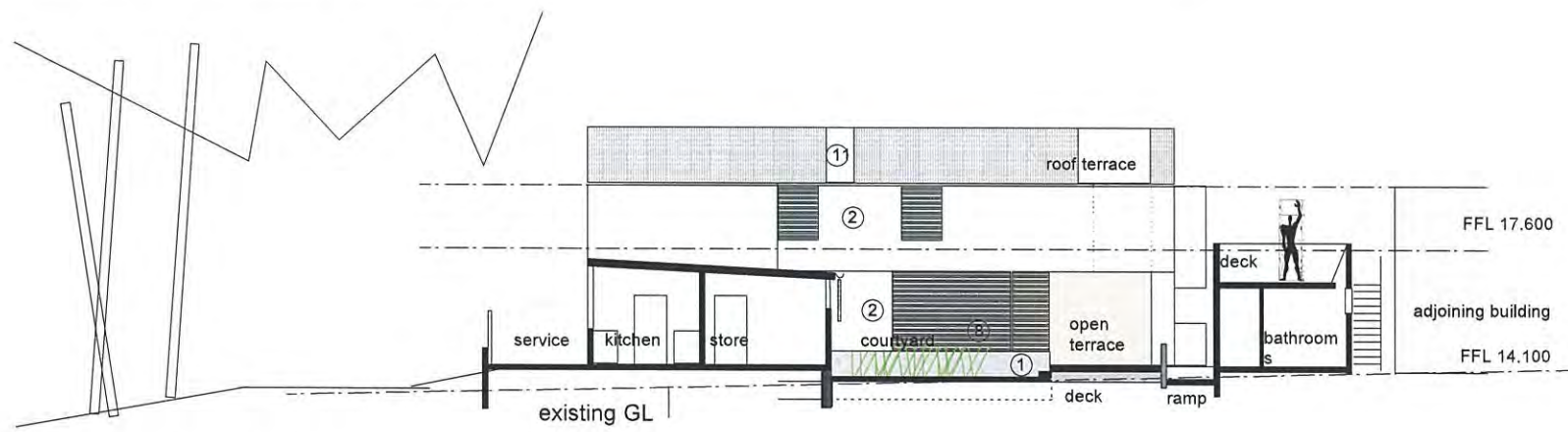
**proposed development 89
strickland street denmark**

mjba
 12 anacapri rd hillarys 6025
 0407443836
 e mjba2arch@westnet.com.au
 27/01/2018

scale 1/200



south- west (strickland) elevation



north east elevation cafe/
section through courtyard

- key**
- 1 rendered masonry
 - 2 painted CFC sheet
 - scyon axon vertical lining board
 - 3 zinalume 1/2 round gutter
 - 4 natural anodised windows
 - 5 metal louvre sun/ fire proection (with mesh backing)
 - 6 face brickwork
 - 7 painted steel
 - 8 charcoal metal windows
 - 9 vertical metal deck / colour warm grey / charcoal
 - 10 zinalume customorb roof at 30 deg
 - 11 skylight
 - 12 painted metal fire shutter / door
 - 13 zinalume roof at 2 deg
 - 14 painted common brick / part
 - hit & miss
 - 15 paint finish
 - 16 toughened glass

RECEIVED

5 APR 2018

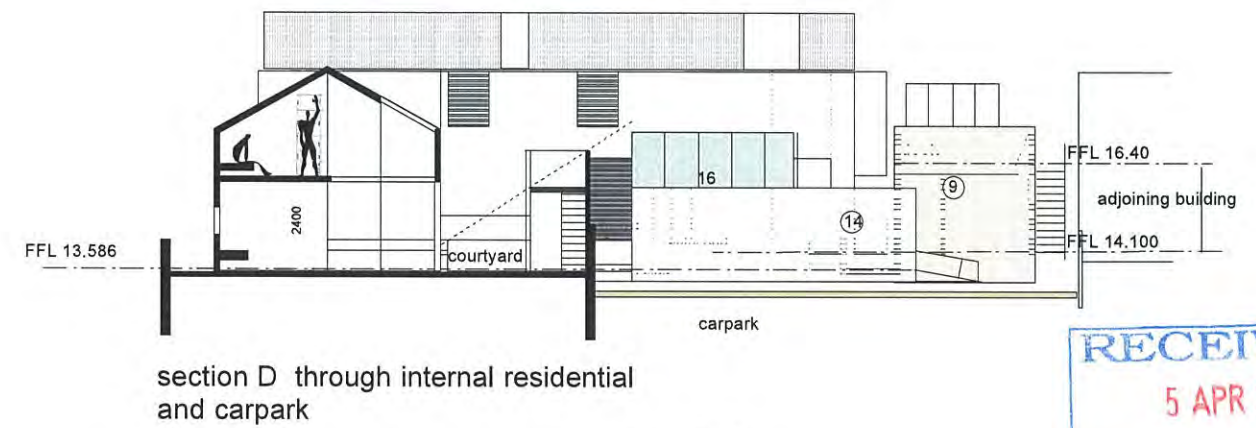
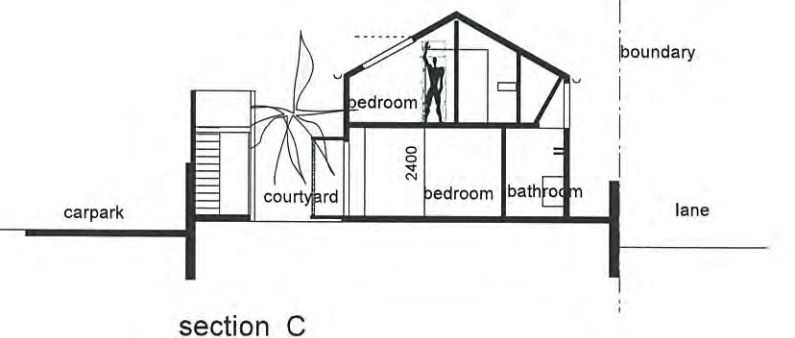
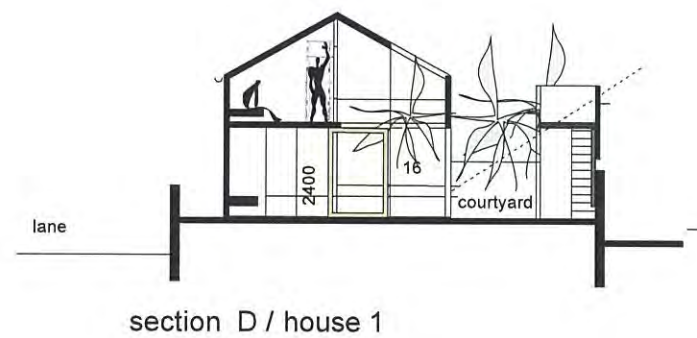
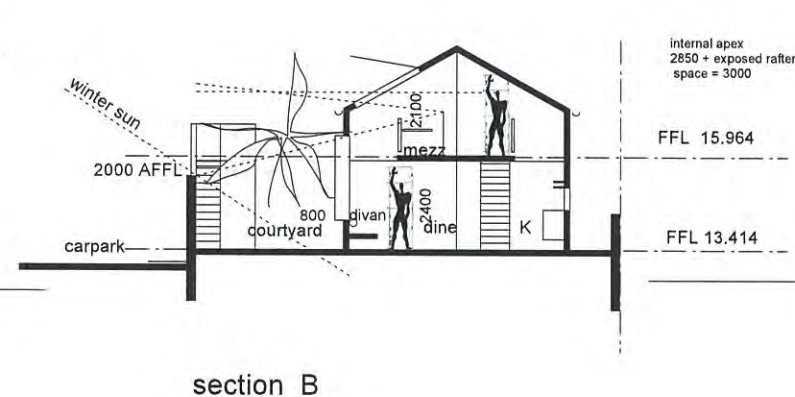
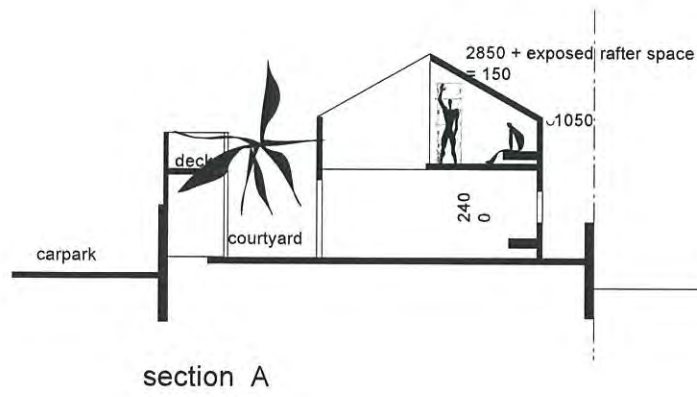
BY: _____

**proposed development 89
strickland street denmark**

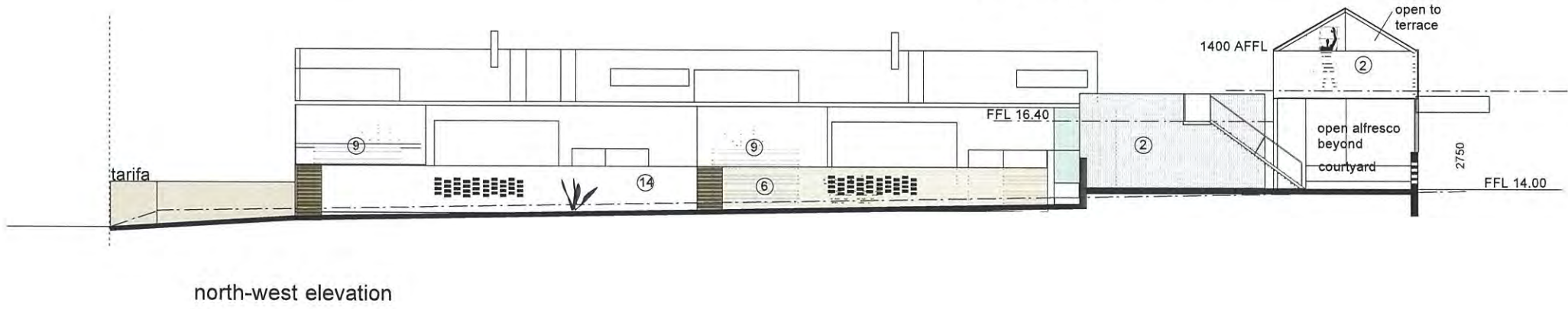
mjba
12 anacpri rd hillarys 6025
0407443836
e mjba2arch@westnet.com.au
27/01/2018

scale 1/200

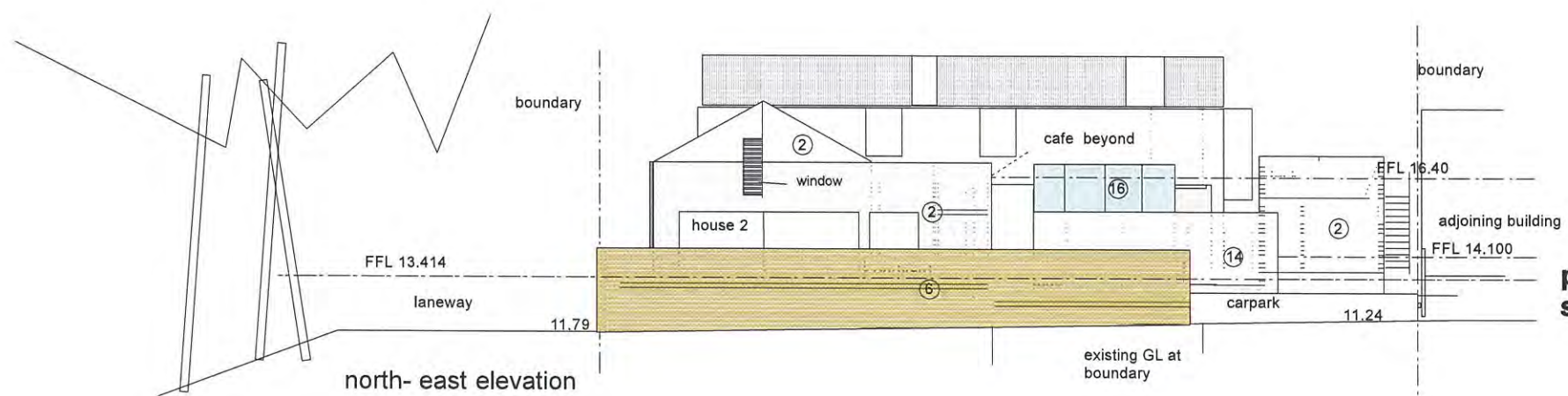
	SD .05
--	--------



RECEIVED
5 APR 2018
BY:



north-west elevation



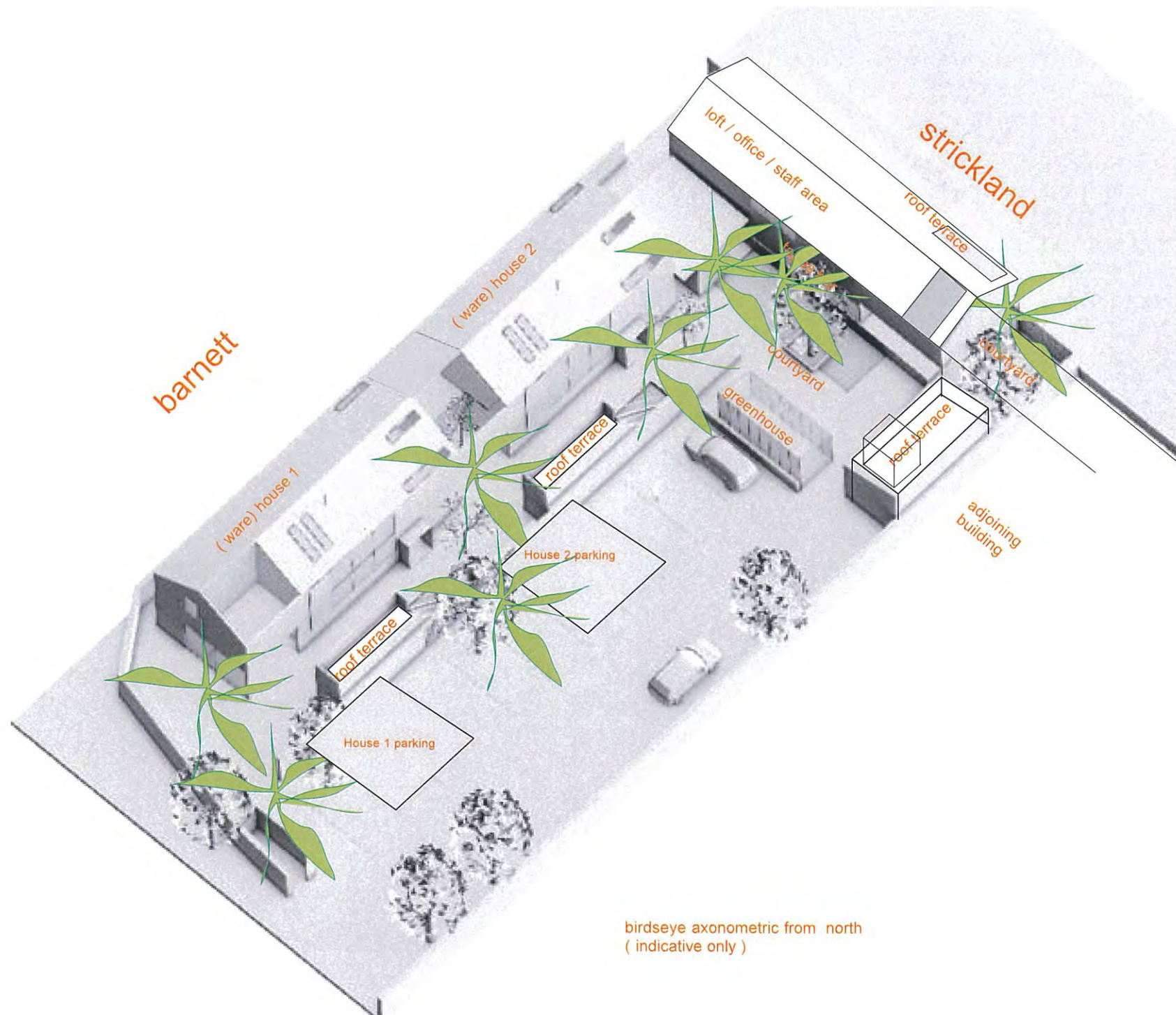
north-east elevation

- key**
- 1 rendered masonry
 - 2 painted CFC sheet scyon axon vertical lining board
 - 3 zinalume 1/2 round gutter
 - 4 natural anodised windows
 - 5 metal louvre sun/ fire projection (with mesh backing)
 - 6 face brickwork
 - 7 painted steel
 - 8 charcoal metal windows
 - 9 vertical metal deck / colour warm grey / charcoal
 - 10 zinaclume customorb roof at 30 deg
 - 11 skylight
 - 12 painted metal fire shutter / door
 - 13 zinalume roof at 2 deg
 - 14 painted common brick / part
 - hit & miss
 - 15 paint finish
 - 16 toughened glass

proposed development 89 strickland street denmark

mjba
12 anacapri rd hillarys 6025
0407443836
e mjba2arch@westnet.com.au
27/01/2018

scale 1/200 SD .06



birdseye axonometric from north
(indicative only)

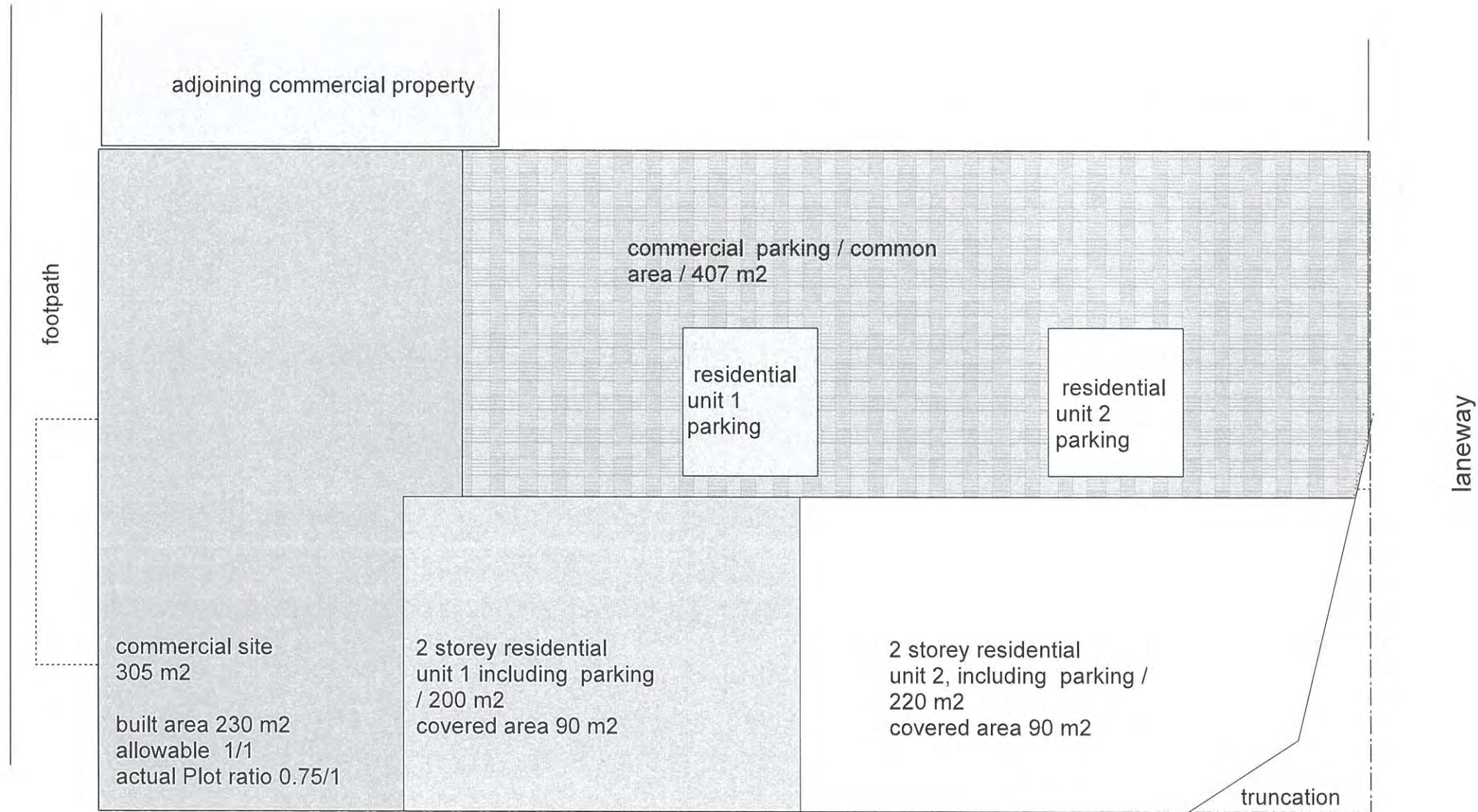
RECEIVED
5 APR 2018
BY: _____

proposed development 89
strickland street denmark

mjba
12 anacapri rd hillarys 6025
0407443836
e mjba2arch@westnet.com.au
27/01/2018

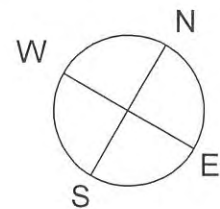
scale 1/200	SD .07
-------------	--------

strickland street



laneway

barnett street



strata subdivision

lot area 1132 m2

**proposed development 89
strickland street denmark**

mjba
12 anacapri rd hillarys 6025
0407443836
e mjba2arch@westnet.com.au
27/01/2018

scale 1/200

SD .01





strickland street
elevation

89 strickland

continuous contiguous elevation in
context



barnett street elevation



89 strickland

3 D images

mjba 29/03 /2018

17 April 2018 - Attachment 8.1.4c

East Court.jpg
JPEG image - 2 MB [View](#) [Download](#)



view from cafe courtyard east to residential section



view from carpark to residential section



Courtyard 2.jpg

view from cafe courtyard looking north east



view of residential section looking south west

materials

key

- 1 rendered masonry
- 2 painted CFC sheet
- scyon axon vertical lining board / off white
- 3 zinalume 1/2 round gutter
- 4 natural anodised windows
- 5 fire resistant timber louvre sun/ fire proection (with mesh backing)
- 6 face brickwork
- 7 painted steel
- 8 charcoal metal windows
- 9 NA
- 10 zinaclume customorb roof at 30 deg
- 11 skylight
- 12 painted metal fire shutter / door
- 13 zinalume roof at 2 deg
- 14 painted common brick / part
- hit & miss
- 15 paint finish
- 16 toughened clear glass



89 strickland denmark

17 April 2018 - Attachment 8.1.4d

materials

key

- 1 rendered masonry
- 2 painted CFC sheet
- scyon axon vertical lining board
- 3 zinalume 1/2 round gutter
- 4 natural anodised windows
- 5 fire resistant timber louvre sun/ fire proection (with mesh backing)
- 6 face brickwork
- 7 painted steel
- 8 charcoal metal windows
- 9 NA
- 10 zinalume customorb roof at 30 deg
- 11 skylight
- 12 painted metal fire shutter / door
- 13 zinalume roof at 2 deg
- 14 painted common brick / part
- hit &miss
- 15 paint finish
- 16 toughened clear glass

10



6



7



5

89 strickland denmark

materials

key

- 1 rendered masonry
- 2 painted CFC sheet
- scyon axon vertical lining board
- 3 zinalume 1/2 round gutter
- 4 natural anodised windows
- 5 fire resistant timber louvre sun/ fire proection (with mesh backing)
- 6 face brickwork
- 7 painted steel
- 8 charcoal metal windows
- 9 NA

- 10 zinaclume customorb roof at 30 deg

- 11 skylight
- 12 painted metal fire shutter / door
- 13 zinalume roof at 2 deg
- 14 painted common brick / part

- hit &miss
- 15 paint finish
- 16 toughened clear glass



11

7



7



89 strickland denmark

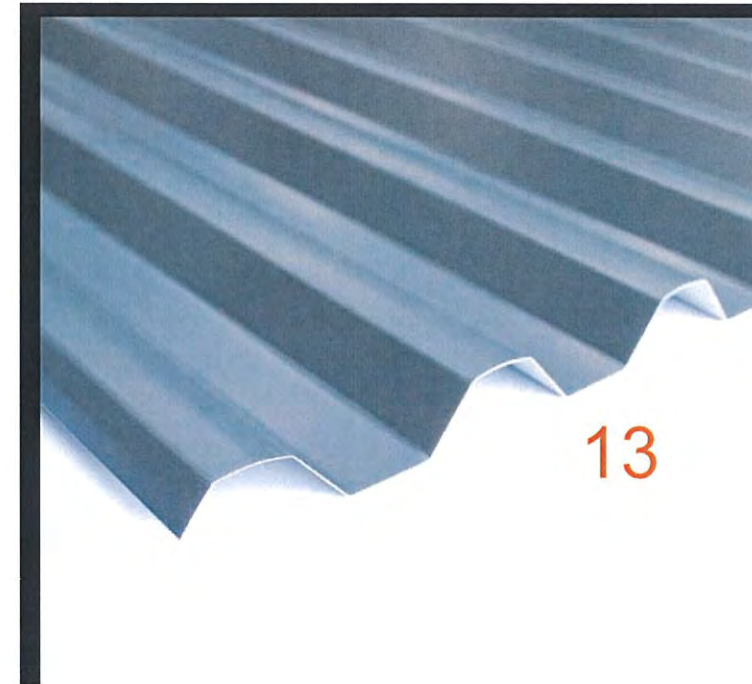
materials

key

- 1 rendered masonry
- 2 painted CFC sheet
- scyon axon vertical lining board
- 3 zinalume 1/2 round gutter
- 4 natural anodised windows
- 5 fire resistant timber louvre sun/ fire proection (with mesh backing)
- 6 face brickwork
- 7 painted steel
- 8 charcoal metal windows
- 9 NA
- 10 zinaclume customorb roof at 30 deg
- 11 skylight
- 12 painted metal fire shutter / door
- 13 zinalume roof at 2 deg
- 14 painted common brick / part
- hit &miss
- 15 paint finish
- 16 toughened clear glass



14



13



15



16

89 strickland denmark