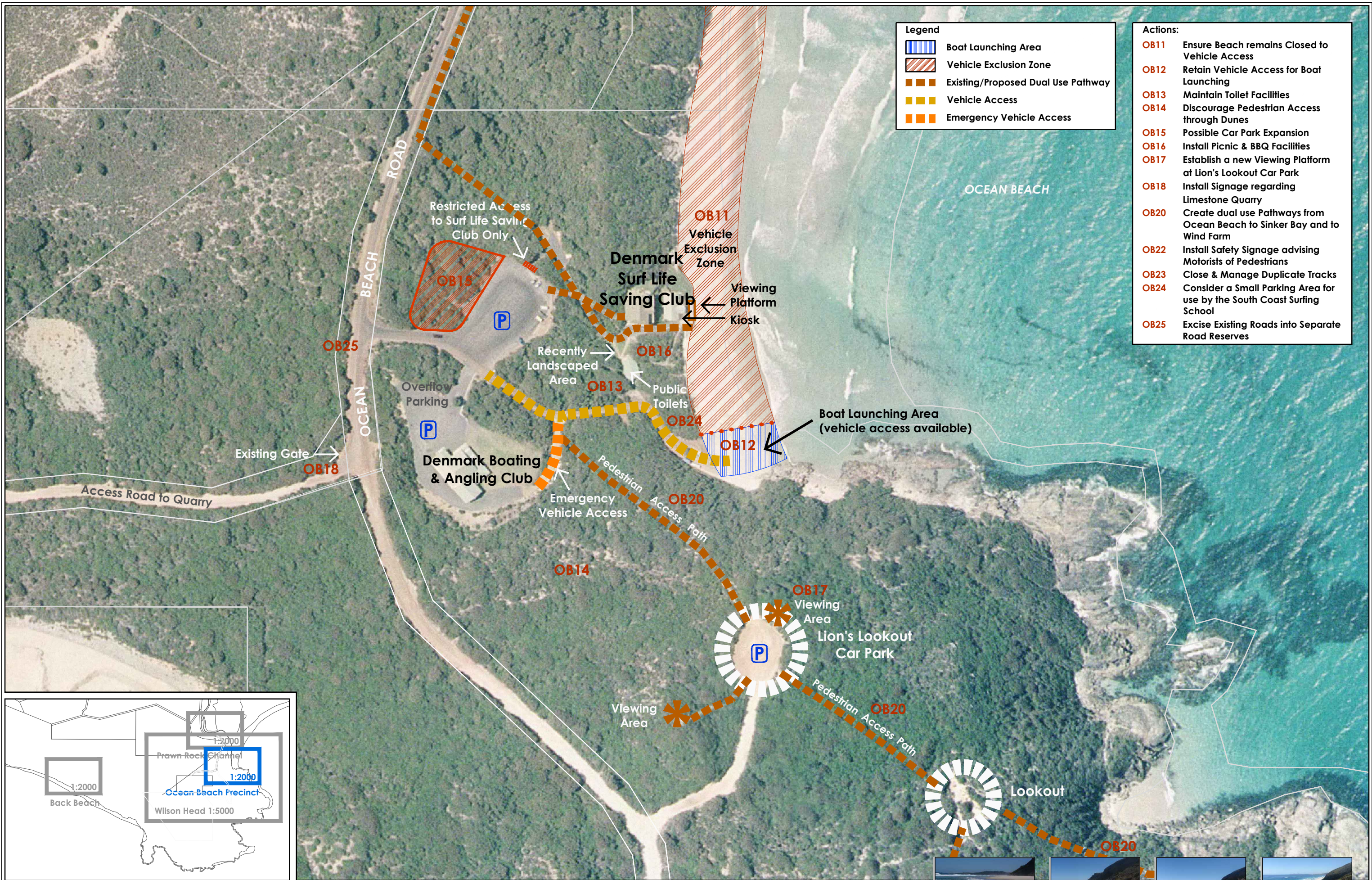


Photographs of unauthorised vegetation clearing and placement of infrastructure on a portion of Reserve 24913, Ocean Beach Road, Ocean Beach, taken 25 October 2013.







Legend

	Boat Launching Area
	Vehicle Exclusion Zone
	Existing/Proposed Dual Use Pathway
	Vehicle Access
	Emergency Vehicle Access

Actions:

- OB11** Ensure Beach remains Closed to Vehicle Access
- OB12** Retain Vehicle Access for Boat Launching
- OB13** Maintain Toilet Facilities
- OB14** Discourage Pedestrian Access through Dunes
- OB15** Possible Car Park Expansion
- OB16** Install Picnic & BBQ Facilities
- OB17** Establish a new Viewing Platform at Lion's Lookout Car Park
- OB18** Install Signage regarding Limestone Quarry
- OB20** Create dual use Pathways from Ocean Beach to Sinker Bay and to Wind Farm
- OB22** Install Safety Signage advising Motorists of Pedestrians
- OB23** Close & Manage Duplicate Tracks
- OB24** Consider a Small Parking Area for use by the South Coast Surfing School
- OB25** Excise Existing Roads into Separate Road Reserves

