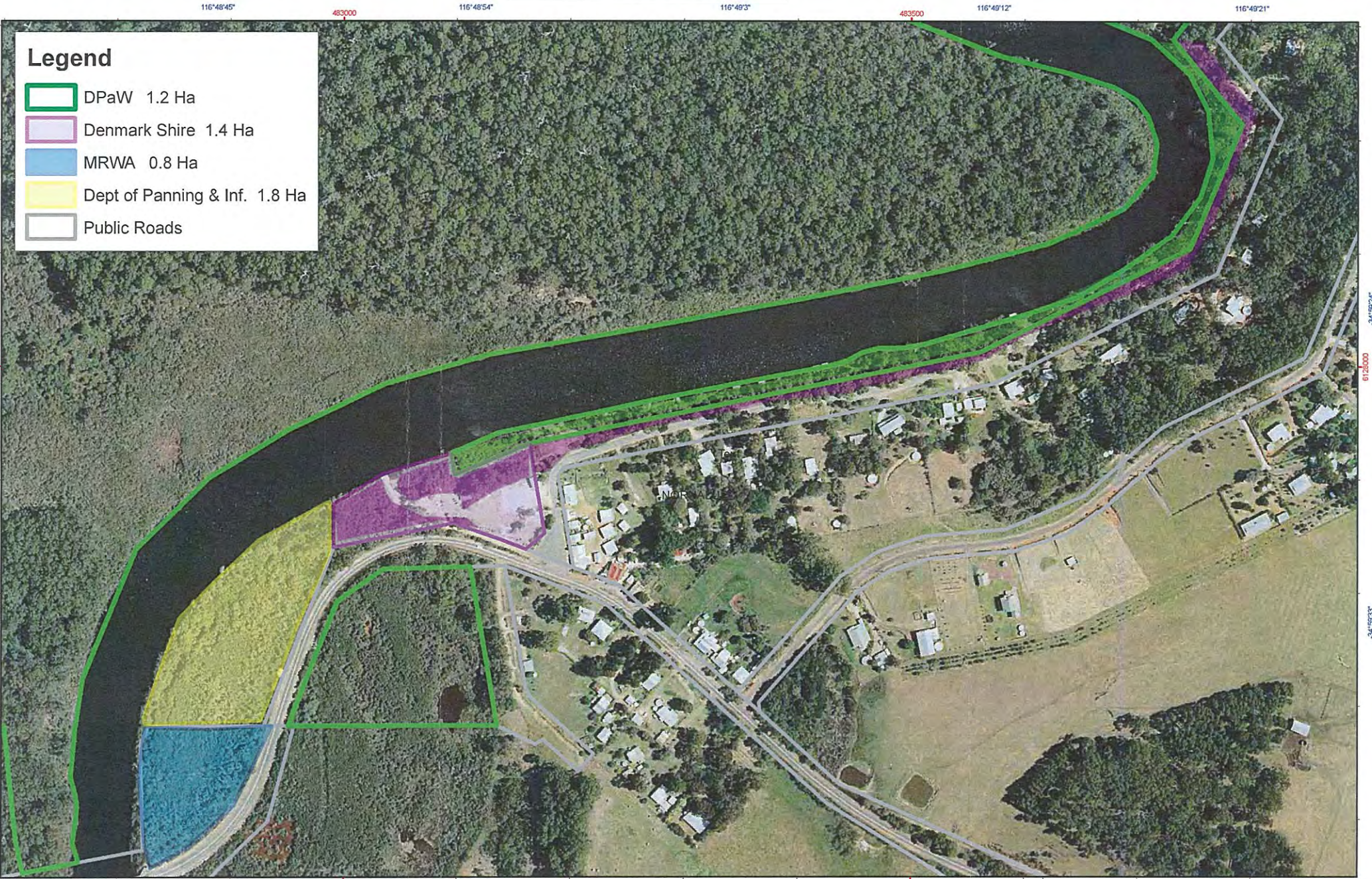


# Nornalup Tenure



**Legend**

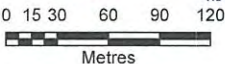
- DPaW 1.2 Ha
- Denmark Shire 1.4 Ha
- MRWA 0.8 Ha
- Dept of Panning & Inf. 1.8 Ha
- Public Roads

Graticule shown at 15 seconds intervals  
Grid shown at 500 metre intervals

Roads and tracks on land managed by DPaW may contain unmarked hazards and their surface condition is variable. Exercise caution and drive to conditions on all roads.

The Dept. of Parks and Wildlife does not guarantee that this map is without flaw of any kind and disclaims all liability for any errors, loss or other consequence which may arise from relying on any information depicted.

1:3,000 (A3)



Produced by the Department of Parks and Wildlife



Department of Parks and Wildlife



Produced at 9:26am, on December 19, 2013



Government of **Western Australia**  
 Department of **Parks and Wildlife**  
 Frankland District

Your ref:  
 Our ref:  
 Enquiries: Mick Murphy  
 Phone: 98400400  
 Email: michael.murphy@dpaw.wa.gov.au

Shire Of Denmark	
GOV. 6A	
04 JUL 2014	
EPH	
ICR197272667	
CEO	
DIR of FINANCE	
DIR of PLANNING	✓
DIR of INFRASTRUCTURE	
DIR of COMMUNITY	
DIR 30	✓

*Annex 1 to CD  
 1-16 Feb*

Dale Stewart  
 Chief Executive Officer  
 Shire of Denmark  
 PO Box 183  
 DENMARK WA 6333

Dear Dale

**RE: PROPOSED BOARDWALK AND CANOE LAUNCH IN NORNALUP**

**BACKGROUND:**

The area in front of Nornalup Riverside Chalets, adjacent to the Frankland River, although small, has significant cultural and ecological value to the Nornalup community and Aboriginal people. The community has been accessing the river in this area for several decades and Aboriginal people have a relationship with this site dating back several thousands of years. The tenure is part Shire of Denmark and the remainder resides within the Walpole Nornalup National Park and is adjacent to the Walpole and Nornalup Inlets Marine Park. Both of these parks have management plans which prescribe values and strategies that the Department of Parks and Wildlife is responsible to implement on behalf of the people of Western Australia. The Department of Parks and Wildlife also has a responsibility to provide sustainable recreation access which does not impede on the ecological values prescribed in these management plans.

The area is utilised by the public for fishing, canoe launching, picnics, swimming and site seeing. Being the lowest point in the Nornalup town site and adjacent to the marine park, this area also serves to be the primary riparian buffer which would strip any excess nutrients from entering the marine park. The most ecologically sound way to achieve this is by rehabilitating and maintaining native riparian vegetation. Recognising these issues and responsibilities, the Department of Parks and Wildlife has been working with the Nornalup community, Shire of Denmark, South Coast NRM, South West Aboriginal Land and Sea Council and Wayne Webb, a traditional Aboriginal custodian, to construct a boardwalk which facilitates the aforementioned activities while also fulfilling the Department of Parks and Wildlife's ecological responsibilities to the Western Australian people.

Discussions around a boardwalk in this area date back many years with a number of variations to the design and a number of different possible funding sources. The most recent planning process can be documented as follows:

Date	Action / Consultation
06 Jan 2013	Marine Park Coordinator, Shaun Ossinger, met with NRRRA to discuss construction of boardwalk. NRRRA asked for concept plans.
March 2013	Department of Parks and Wildlife constructed retaining wall and backfilled 7m <sup>2</sup> of eroded riverbank caused by human disturbance

Frankland District  
 South Coast Highway, Walpole, Western Australia 6398  
 Phone: (08) 9840 0400 Fax (08) 9840 1251 Email: frankland.district@dpaw.wa.gov.au  
 www.dpaw.wa.gov.au

Feb-May 2013	Landscape architect drafted five concept plans, including two onsite consultations with Tony Ireland, owner Nornalup Riverside chalets, to incorporate canoe launching into boardwalk
17 June 2013	Presented concepts to NRRRA. Received an 'in principle' letter of support from Ian Payton on behalf of NRRRA and Wayne Webb based on the construction of a boardwalk which would: <ol style="list-style-type: none"> <li>1. Construction of a boardwalk that connect Riverside Driver to river,</li> <li>2. Facilitate canoe launching better than current canoe launch,</li> <li>3. Serves to rehabilitate and protect riparian vegetation,</li> <li>4. Provides universal access to river.</li> </ol>
June 2013	Applied for Coast West grant to construct boardwalk with support from Wayne Webb.
Oct 2013	Informed unsuccessful on Coastwest Grant as CoastWest already funding one infrastructure project elsewhere
10 March 2014	Allison Donovan and Shaun Ossinger attended NRRRA meeting to discuss boardwalk. Included site visit. Informed attendees all area would be rehabbed surrounding boardwalk. NRRRA requested a more formal concept plan.
May 2014	Parks and Wildlife formulated the Nornalup Community Working Group with support from the Shire of Denmark and South Coast NRM. This group has a broad representation from the Nornalup community with the objective to engage in on ground works (weeding, rehab, erosion control, etc.) across the range of tenures along the foreshore.
May 2014	Department of Parks and Wildlife Landscape Architect met with Geoff Ireland while formulating new concept plan
21 May 2014	Landscape Architect presented new concept plan at Nornalup Community Working Group meeting. Universal support with noted exception of Geoff Ireland, brother of Tony Ireland. Concerned about where they would store their canoes (currently storing them on the cleared area of the National Park).
10 June 2014	Met with representatives of Nornalup community, NCWG, NRRRA and Wayne Webb at Nornalup Hall and distributed boardwalk plans. Performed site visit with SWALSC. SWALSC supported project and stated 'boardwalk footprint could be no larger <u>and</u> whole area must be rehabilitated to receive their formal support.'
13 June 2014	Shaun Ossinger met with Tony Ireland on site. Tony Ireland's main concern was the storage of his canoes (currently stored on grassed section of National Park which would become rehabilitated under boardwalk plans)
02 July 2014	Received letter from NRRRA stating they support boardwalk but want to retain the cleared area (i.e. no rehabilitation)

The Department of Parks and Wildlife recognises that there is a range of opinions in the Nornalup community on this matter. The construction of a boardwalk without rehabilitation, as supported in letter from NRRRA dated 02 July 2014, is not a viable option as it would deliver no ecological benefit nor receive support from SWALSC. We believe the concept produced (see attached) is an excellent compromise between the diverse range of stakeholders, activities and aspirations of the community whilst upholding our responsibilities to implement the relevant management plan strategies. As a result of our community engagement on this project, the boardwalk was:

- enlarged by approximately 20m<sup>2</sup> from the original design that had in principle support from NRRRA,
- the balustrading was removed from the river side of the boardwalk to facilitate recreational fishing,
- seating and table were incorporated to facilitate picnics,
- steps were broadened to facilitate easier access for swimmers,

- consulted DOT to gazette a 'motor vessel exclusion zone' around boardwalk to facilitate recreational swimming,
- And we will continue to work with Nornalup Riverside Chalet to ensure custom canoe launching facilities at the end of the boardwalk are suitable.

To progress with design drawings and then construction, I seek formal council approval and of the plans and associated materials budget. As previously discussed, the Department of Parks and Wildlife will provide the budget for planning and the wages component of the budget if the Shire of Denmark is able to fund the purchase of materials. Once this project is complete, it will be a real asset to the Nornalup community and visitors alike.

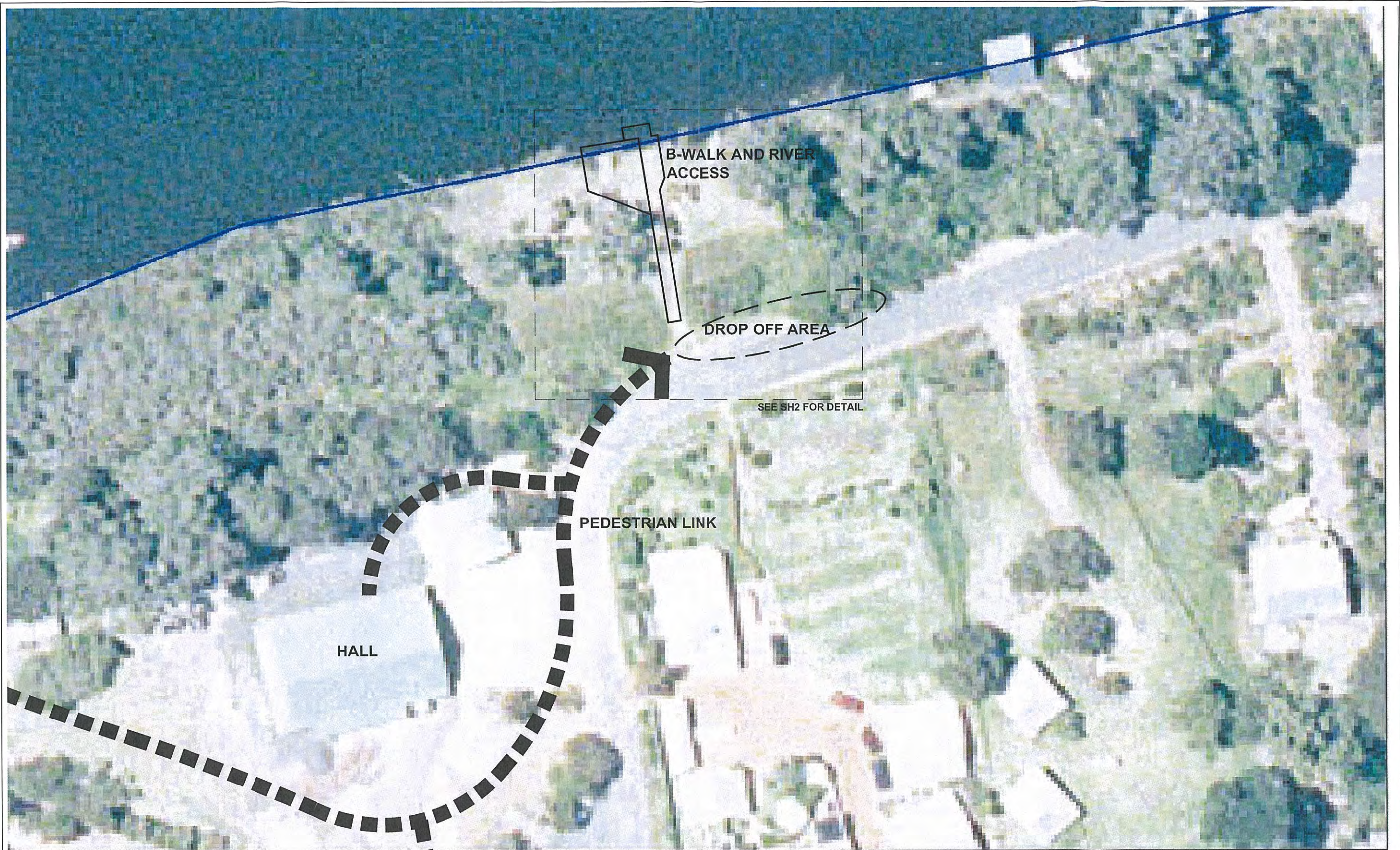
If you would like to discuss this proposal further, please contact myself, or Shaun Ossinger. We are also happy to present the information at a council meeting if needed.

Yours sincerely



Michael Murphy  
A/ District Manager  
Frankland District  
Department of Parks and Wildlife

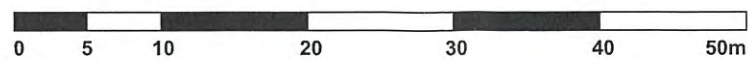
02 July 2014



01  
-

PLAN  
1:500

OVERVIEW



REV #	REV_DESCRIPTION	REV_DATE
REV	DESCRIPTION	DATE

**DRAFT**  
NOT FOR CONSTRUCTION



Department of  
Parks and Wildlife

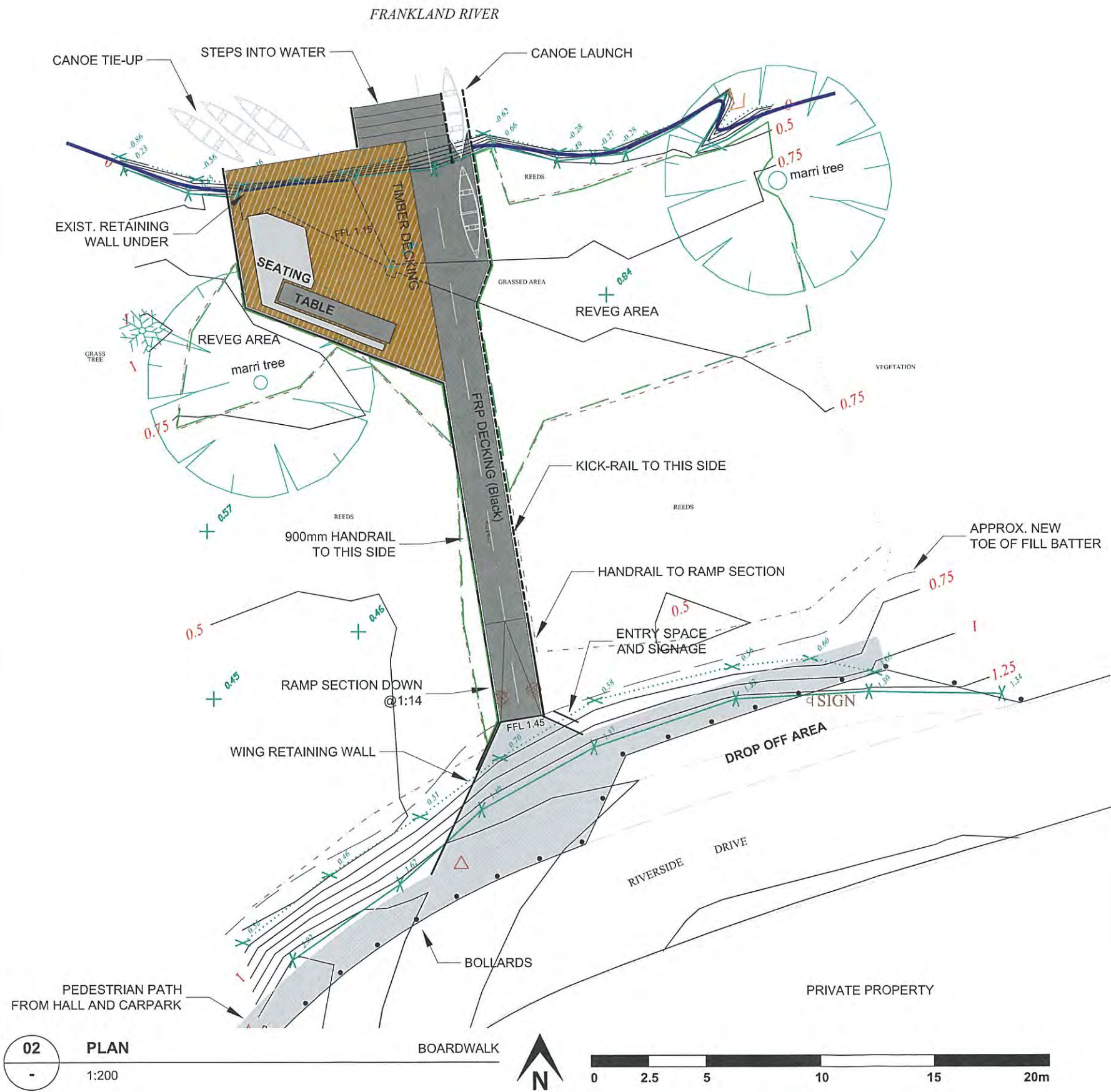


These drawings are administered by the Recreation & Landscape Unit for DPaW use only and must not be used, copied or passed to external parties without permission from the Recreation and Landscape Unit. Builders shall verify all dimensions and refer all errors or omissions to the Project Manager (DPaW). Do not scale off drawings. Do not change the documented design (including written specification & other drawings noted) unless checked by the Recreation and Landscape Unit and approved by DPaW.

**NORNALUP B-WALK & CANOE LAUNCH**  
CONCEPT PLAN  
EXISTING LAYOUT  
Waren Region / Frankland District

Designer/s: DS	Draftperson/s: DS	Engineer: -
Scale @ A3: -	Checked by: -	Region and District Approval: -

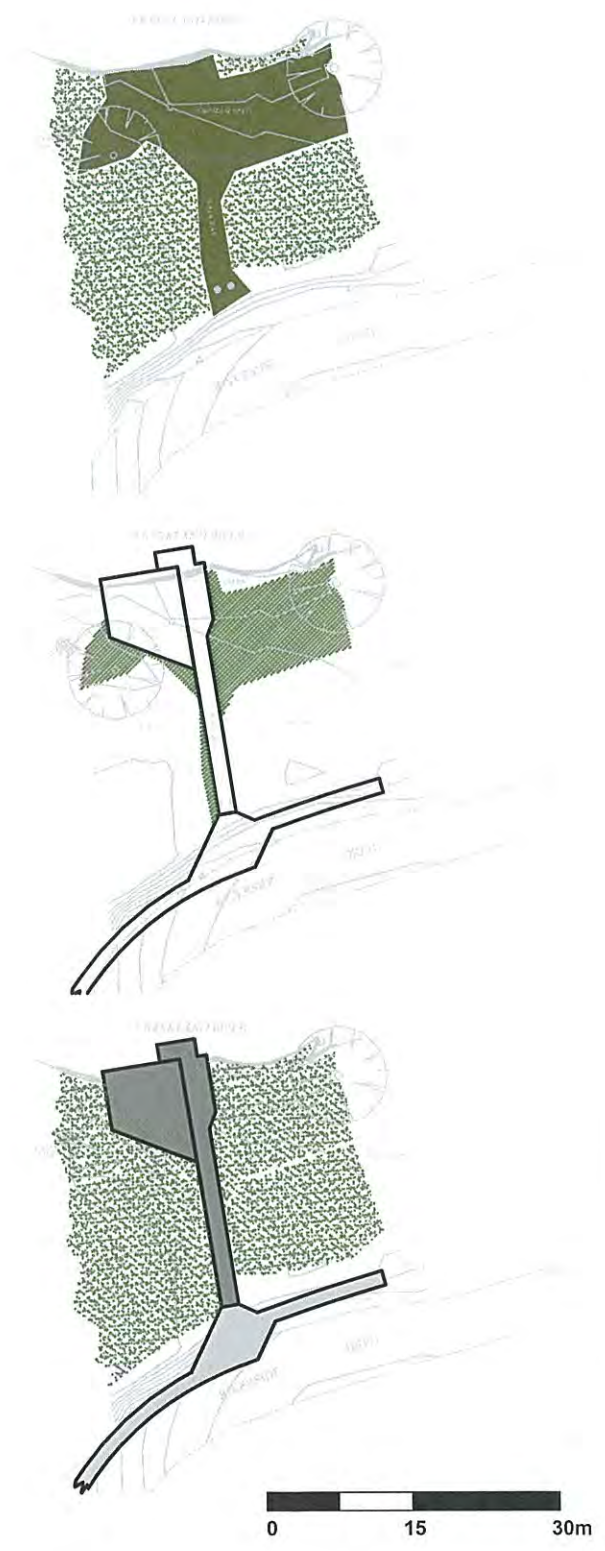
Date:	Project Number:	Drawing:	Sheet no.
140516	W1401	nornalup boardwalk_CP DR	1 of 3



EXISTING DISTURBED AREA  
(283m<sup>2</sup>)

REHAB AREAS  
(166m<sup>2</sup>)

PROPOSED  
(Decking  
125m<sup>2</sup>)



02 PLAN  
1:200

03 PLAN REVEGETATION  
1:750

**DRAFT**  
NOT FOR CONSTRUCTION

These drawings are administered by the Recreation & Landscape Unit for DPaW use only and must not be used, copied or passed to external parties without permission from the Recreation and Landscape Unit. Builders shall verify all dimensions and refer all errors or omissions to the Project Manager (DPaW). Do not scale off drawings. Do not change the documented design (including written specification & other drawings noted) unless checked by the Recreation and Landscape Unit and approved by DPaW.

Designer/s: DS	Draftperson/s: DS	Engineer: -
Scale @ A3: -	Checked by: -	Region and District Approval: -

REV #	REV_DESCRIPTION	REV_DATE
REV	DESCRIPTION	DATE

Department of Parks and Wildlife

**NORNALUP B-WALK & CANOE LAUNCH**  
CONCEPT PLAN  
Waren Region / Frankland District

Date:	Project Number:	Drawing:	Sheet no.
140508	W1401	nornalup boardwalk_CP DR	2 of 3



**EXISTING**



**EXISTING JETTY MATERIALS**



**CANOE LAUNCH EXAMPLE**



**MIX OF MATERIALS - UNIVERSAL ACCESS**



**PROPOSED**



**MIX OF MATERIALS - HANDRAILS**



**REVEGETATION POTENTIAL UNDER STRUCTURE**

REV #	REV_DESCRIPTION	REV_DATE
REV	DESCRIPTION	DATE

**DRAFT**  
NOT FOR CONSTRUCTION



Department of  
Parks and Wildlife



These drawings are administered by the Recreation & Landscape Unit for DPaW use only and must not be used, copied or passed to external parties without permission from the Recreation and Landscape Unit. Builders shall verify all dimensions and refer all errors or omissions to the Project Manager (DPaW). Do not scale off drawings. Do not change the documented design (including written specification & other drawings noted) unless checked by the Recreation and Landscape Unit and approved by DPaW.

**NORNALUP B-WALK & CANOE LAUNCH**  
CONCEPT PLAN  
PHOTO MONTAGE  
Waren Region / Frankland District

Designer/s: DS	Draftperson/s: DS	Engineer: -
Scale @ A3: -	Checked by: -	Region and District Approval: -
Date:	Project Number:	Drawing:
140508	W1401	nornalup boardwalk_CP DR
		Sheet no. <b>3</b> of <b>3</b>

## **Attachment 8.1.1c**

### **Budget Estimate for Nornalup Foreshore Boardwalk and Canoe Launch Project**

*Note this budget is an estimate only and based solely on concept designs. All figures are exclusive of GST.*

#### **Boardwalk and canoe launch structure materials**

- Boardwalk (126m<sup>2</sup>) materials \$275/m<sup>2</sup> = **\$34,650**
- Steps - **\$4,000**
- Canoe side / rails - **\$5,000**
- Signage - **\$2,000**
- Seating / table - **\$4,000**

**Sub-total = \$49,650**

#### **Civil works materials and labour for drop-off bay on Riverside Drive and connector pathway from hall**

- Drop-off area and adjacent collector path apron (2-coat seal for universal access) 110m<sup>2</sup> @\$50/m<sup>2</sup> = **\$5,500**
- 2 m wide sealed collector path from hall 60m = **\$7,200 - \$12,000** (may vary depending on final length and extent of earthworks required) (line marking the road edge or continuation of bollards may be adequate in some places and decrease path length required)
- Bollards – 20 @ \$100ea installed = **\$2,000**

**Sub-total = \$19,500**

- Labour for construction of boardwalk and canoe launch structure = **\$40,000 - \$50,000**

**Sub-total = \$50,000**

**Total project costs (max) = \$ 119,150**