

Shire of Denmark	
A3108	
15 AUG 2011	
ICR1188619	
DATE	LP#
FILE REF	
COUNCILLORS	
CEO	
DIR of FINANCE	
DIR of PLANNING	
DIR of INFRASTRUCTURE	
DIR of COMMUNITY	
OTHER	

Gregg - one for info. yours
Gregg, actual response

C.E.O.
 Shire of Denmark

11th August 2011

Attention: Gregg Harwood

Dear Sir
 Please find enclosed some preliminary sketches of proposed future extensions to the Denmark Surf lifesaving club.
 At this point in time we are at the very early planning stages of this development, and have put our ideas in sketch form so as to receive feedback and suggestions from shire and our parent body.

The Denmark Surf Lifesaving club has been growing in membership and service capacity during the last decade, and has reached the point where our equipment storage, training rooms and first aid rooms no longer meet our physical needs or O.H. & S. standard for these facilities. The last year has seen the introduction of a Wesfarmers sponsored 24/7 emergency response jet ski and trailer which require easy access for hook-up.

We see the additions shown in the sketch as being a short to medium solution for club requirements that cover the next ten years. We also see a long term need to remove and replace the old original clubhouse on the beach and replicate part of its functions in a new facility. We see scope for this long term planning to incorporate a new set of public toilets/Surf club toilets/ first aid area/storage areas etc to the west of the existing public toilets, so as all the area where the present public toilets are situated becomes lawned public space. This discussion will be of a long term nature, and can run concurrent with planning for the short to medium term.

The rational for the proposed sketched additions is as follows.
 The site is an unused section of dune between the access track to the beach and the access to the top floor of our building. This dune would be removed and the lower level reduced to the level of our existing storage facility. This bottom floor storage area would double our equipment storage space. Above the exiting storage space .a second floor would incorporate new training rooms. The structure has already been built with this in mind, and the floor joists for the top floor addition are already in place. The existing small training rooms on the ground floor of the present facility would be turned into locker rooms for the male and female toilets, as these facilities are bursting at the seams.

Attachment 8.2.3 a)

Above the new storage space would be a Kiosk to replace the facility in the original building on the beach. The original facility fails to meet modern public health requirements.

This would allow the present kiosk space in the beachside original clubhouse to be added to the existing first aid room, which would improve access and functionality of this facility, and allow us to bring it to a suitable hygienic standard.

We see the new kiosk being run by club volunteers in the medium term, but would open discussions with shire –re this being a commercial leased facility when it grows beyond the capacity of parent volunteers. Issues such as metering of services, rating for that space, lease fees etc need to be worked out over the next few years.

Overall cost of the development, which includes the additions on the sketch drawings, internal upgrade for health and hygiene to existing toilets and first aid room, landscaping, realigning of electrical services and public art would be in the range of \$600,000 to \$700,000.

As a first step we would like to gain access over the next financial year to \$20,000 to do detailed architectural drawings, produce a scope of works document, and have it costed. We seek shires assistance and suggestions as to how to access these funds, both through their own budget process, state governments departments and any other relevant suggestions.

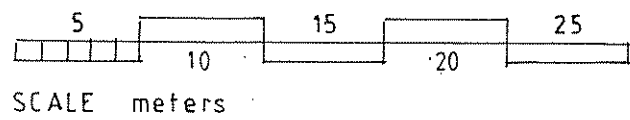
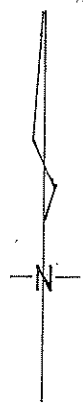
*missed
budget
2011/12*

*- Cooc
- Cooc*

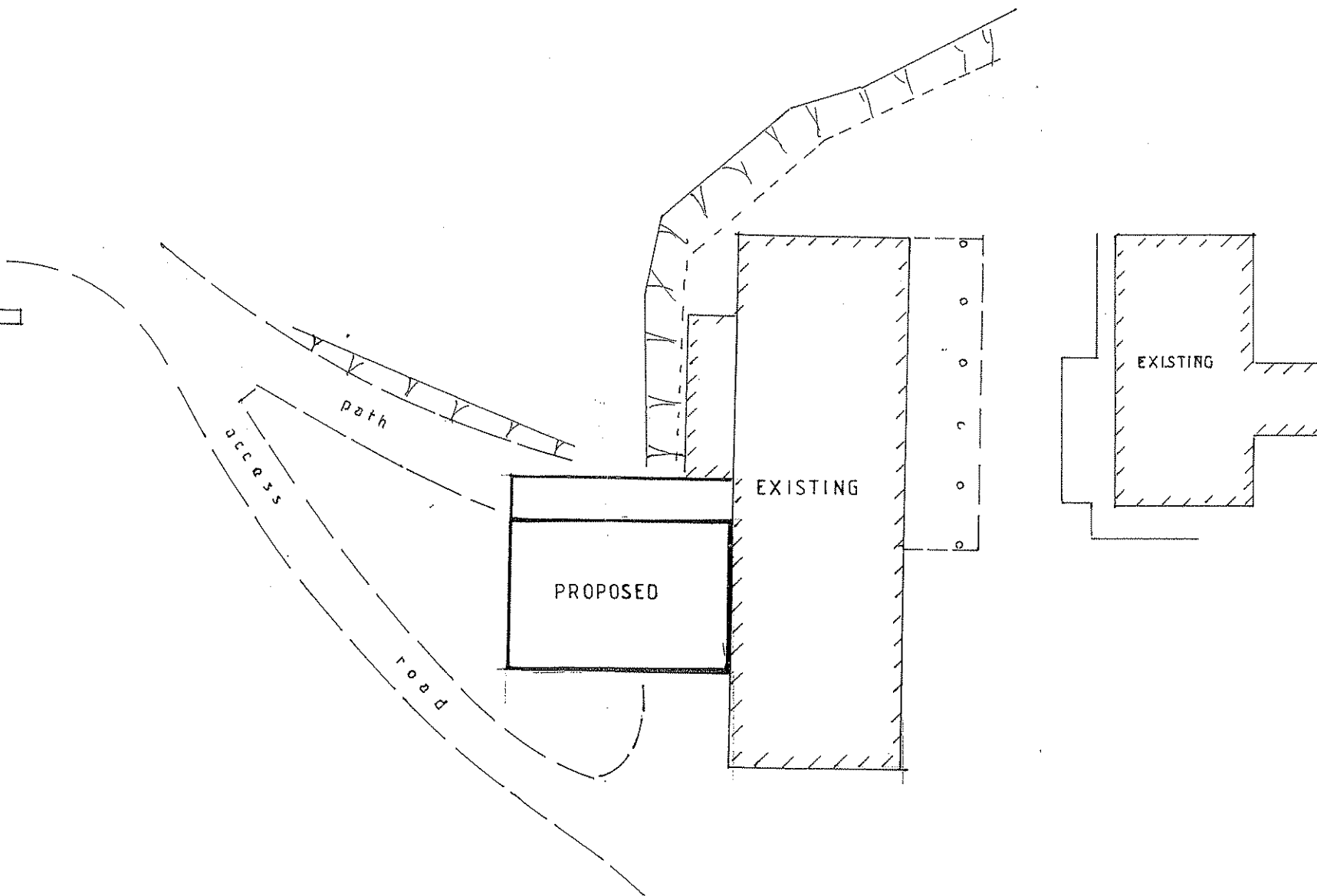
Thanking You

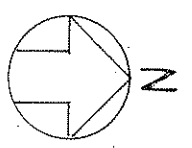
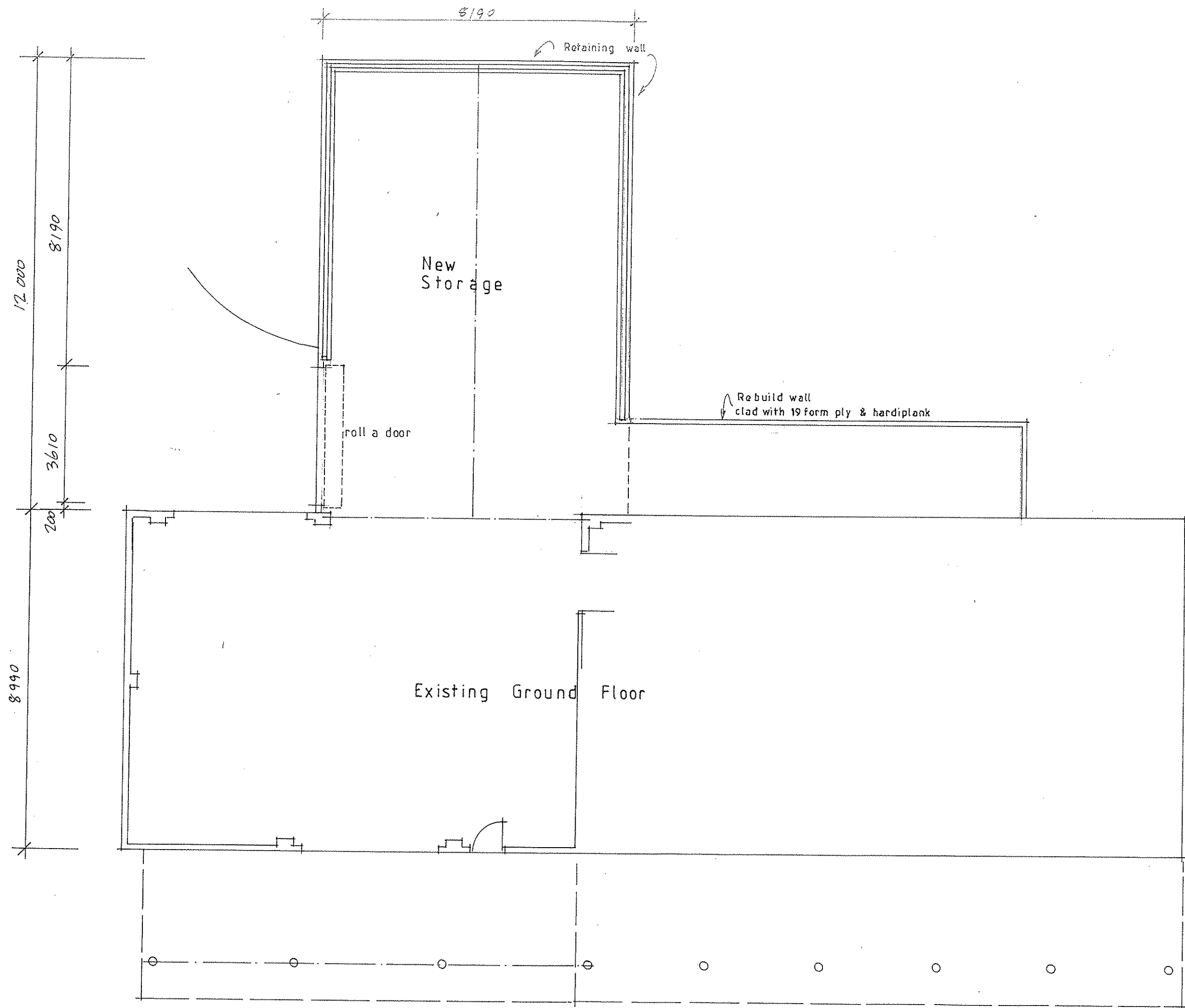
Murray Thornton 0488 481 776
Special Projects Office
C/O Denmark Surf Lifesaving Club
PO Box 253
Denmark

Cc Surf Life Saving W.A
Club Secretary



SITE PLAN

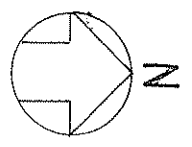
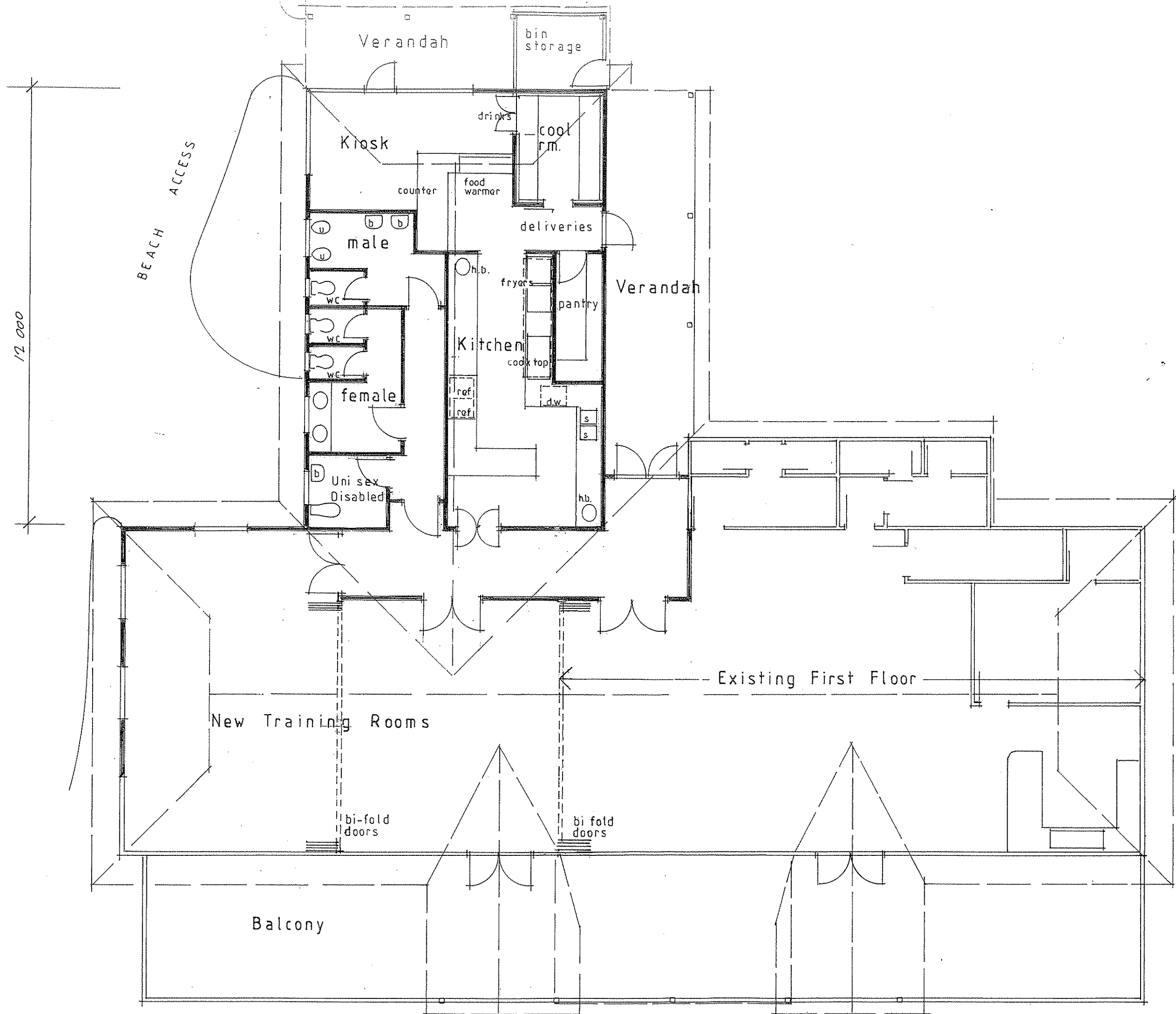




GROUND FLOOR
PLAN

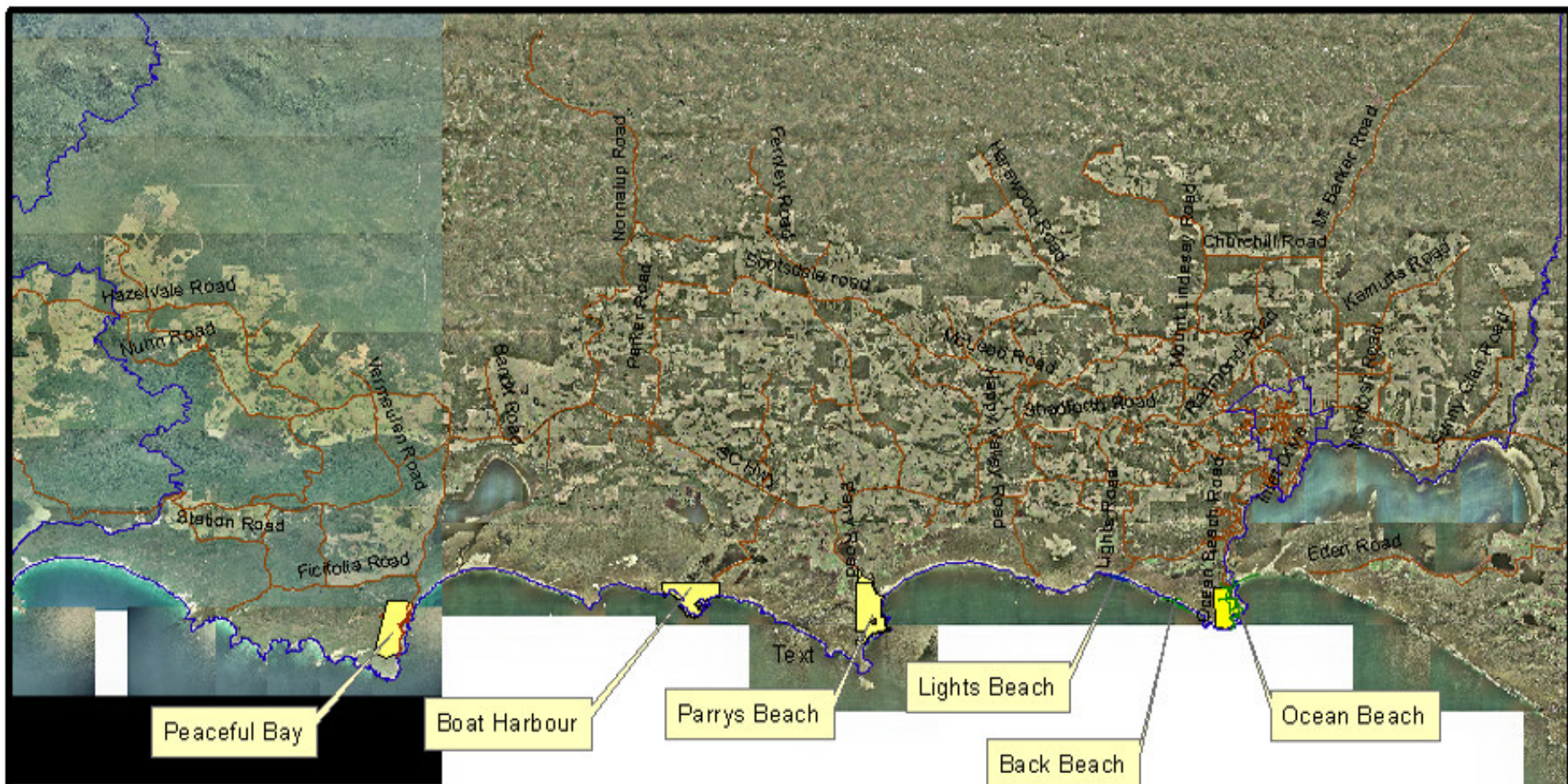
1:100

SKETCH PLAN
DENMARK SURF LIFE SAVING
CLUB



FIRST FLOOR PLAN


1:100
 SKETCH PLAN
 DENMARK SURF LIFESAVING CLUB



Shire of Denmark Coastal Management Plan 2003-2008 Coastal Reserves

0 3,700 7,400 14,800 Meters



 Shire of Denmark Coastal Reserves

Produced by Y.Caruso for Shire of Denmark 18/09/08



Attachment 8.2.3 b)



